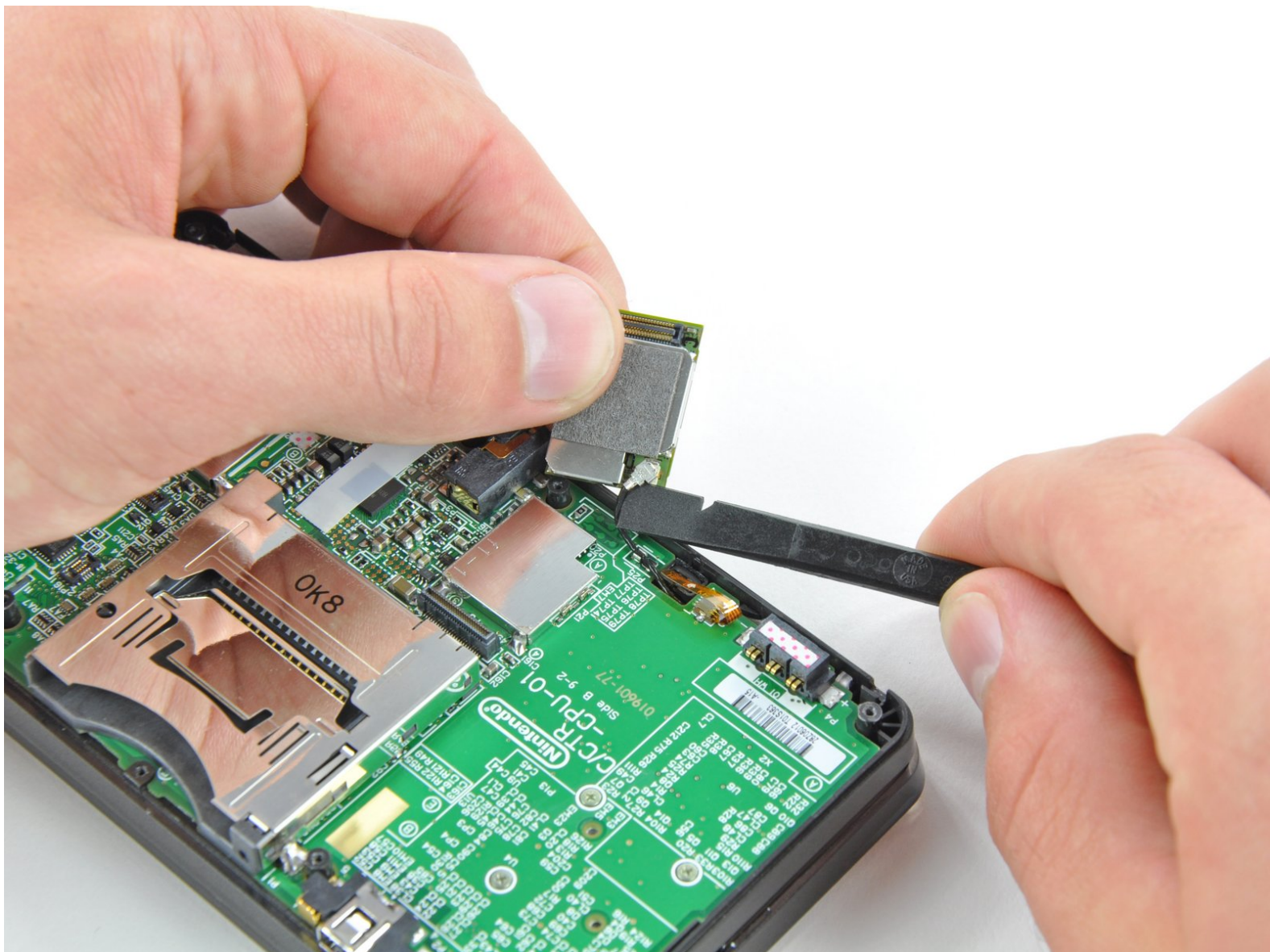




# Nintendo 3DS Wi-Fi Board Replacement

Wi-Fi board prerequisite.

Written By: David Hodson



---

## INTRODUCTION

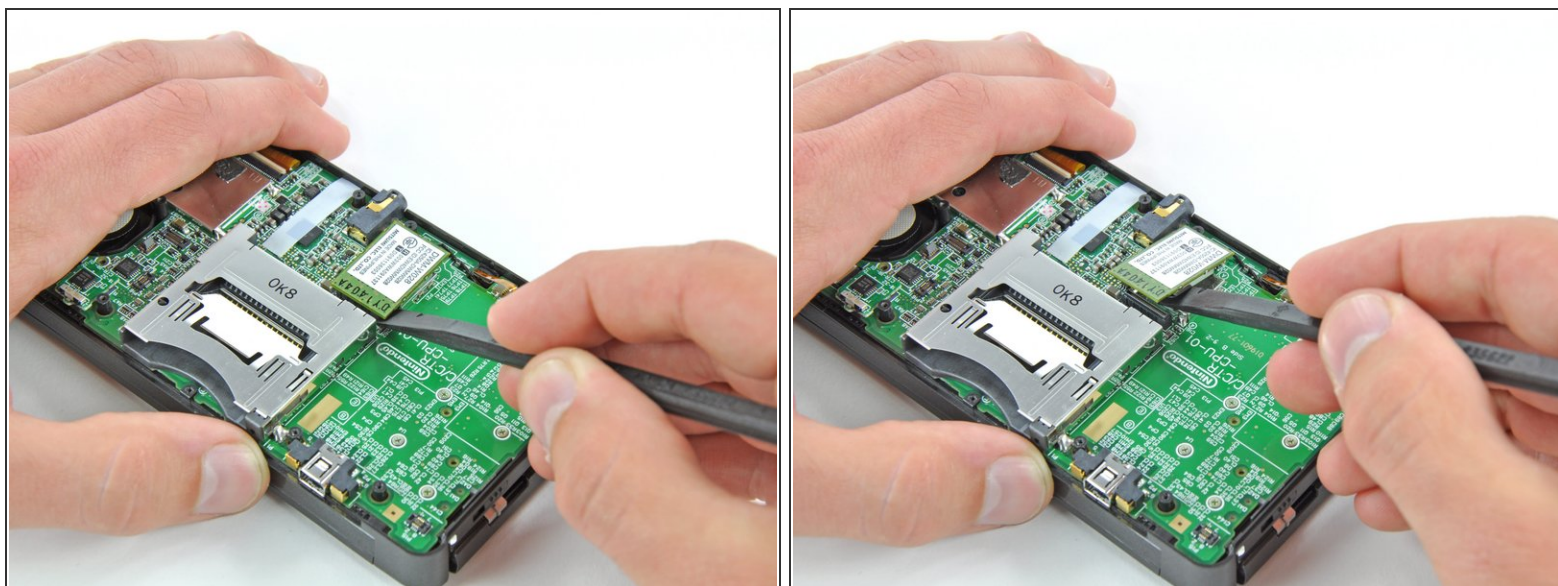
Wi-Fi board prerequisite guide.

---

### TOOLS:

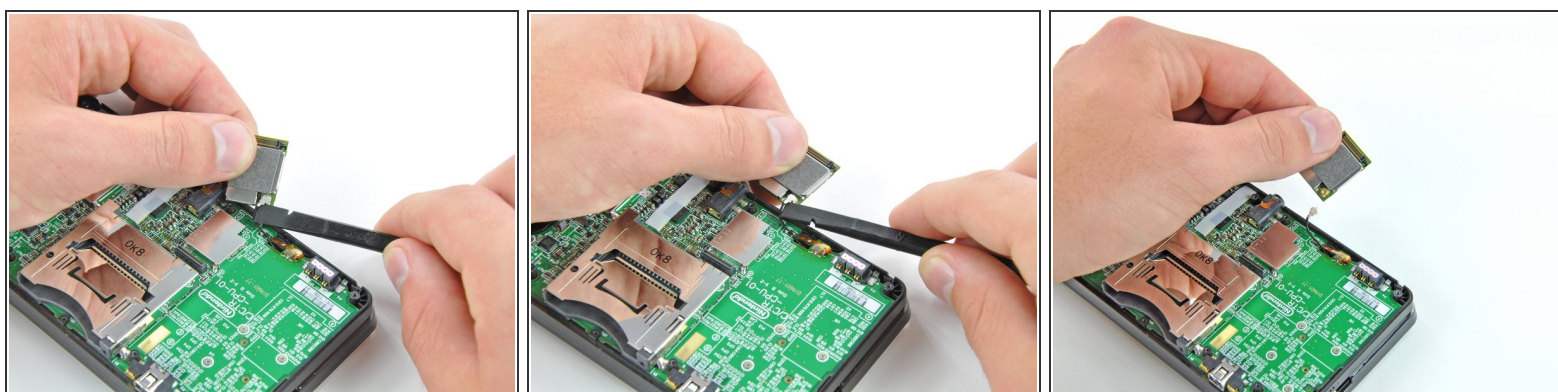
- [Spudger](#) (1)
-

## Step 1 — Wi-Fi Board



- Slide the flat end of a spudger under the corner of the Wi-Fi board, and lift it away from the motherboard.
- ⓘ The Wi-Fi antenna cable is still connected to the Wi-Fi board, so you cannot completely remove the Wi-Fi board yet.

## Step 2



- ⓘ Lift the Wi-Fi board off the motherboard and rotate it so that the bottom side is facing up.
- Use the flat end of a spudger to pry the Wi-Fi antenna cable connector off its socket on the Wi-Fi board.
- Remove the Wi-Fi board from the device.

To reassemble your device, follow these instructions in reverse order.