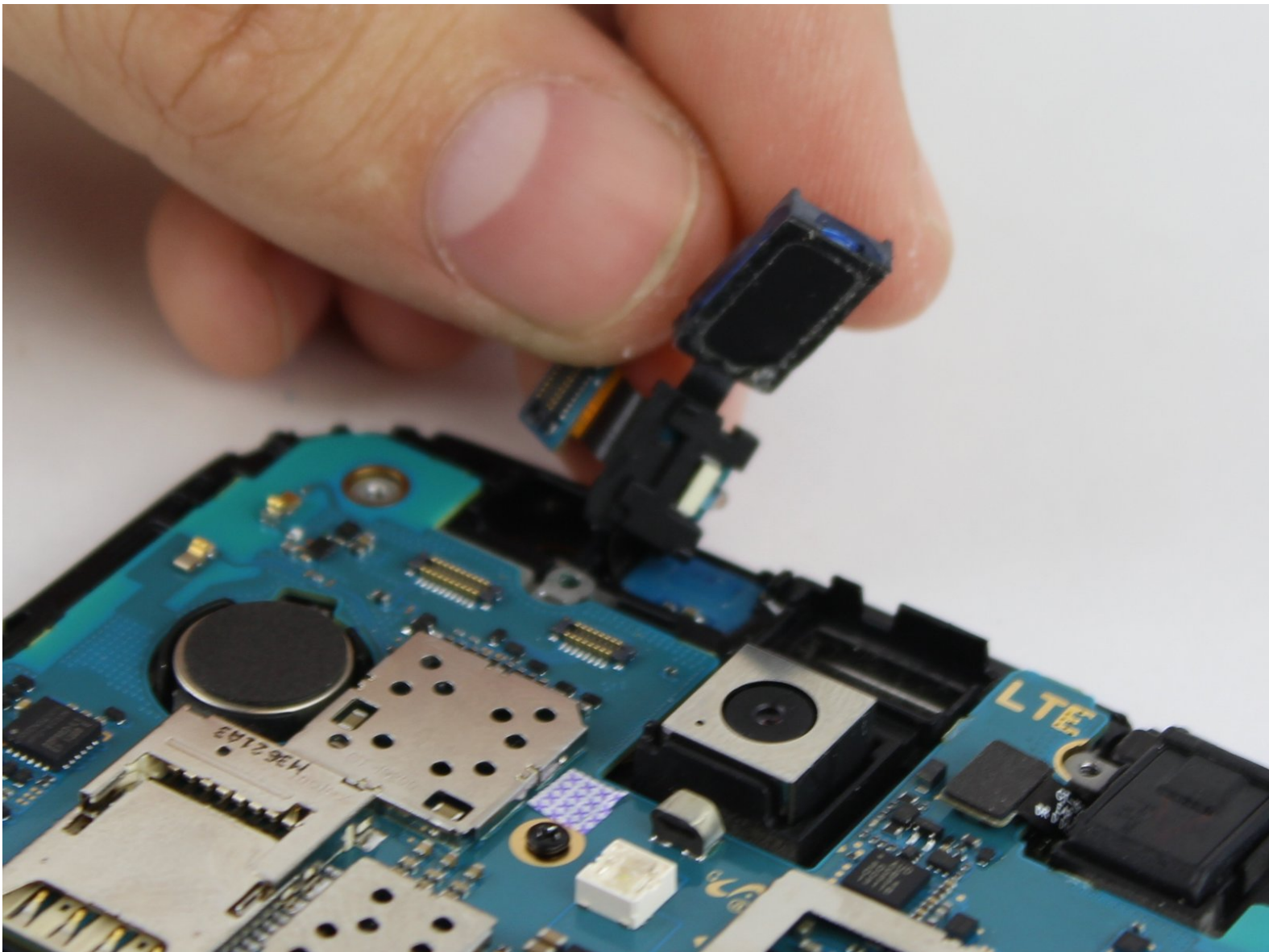




# Samsung Galaxy Mega Earpiece Speaker/LED Indicator Replacement

Replacement for the front facing speaker (the speaker you listen to when on a phone call) and the LED blinker on the front of the phone next to the speaker.

Written By: Max Rathman



This document was generated on 2019-10-02 03:12:11 PM (MST).

## INTRODUCTION

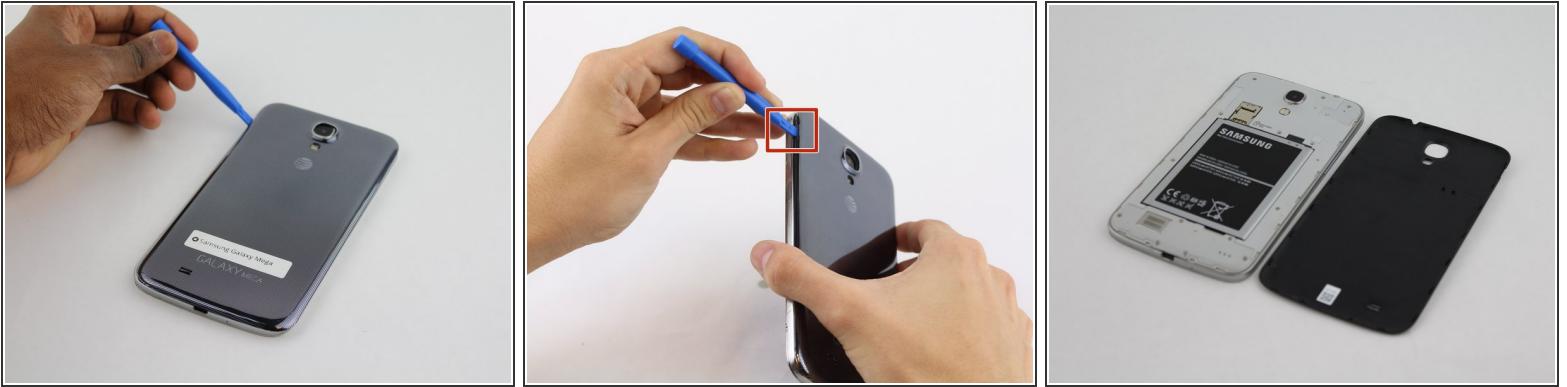
This guide instructs on how to replace the front facing speaker and LED blinker.

---

### TOOLS:

- [Metal Spudger](#) (1)
  - [Phillips #000 Screwdriver](#) (1)
  - [iFixit Opening Tools](#) (1)
-

## Step 1 — Battery



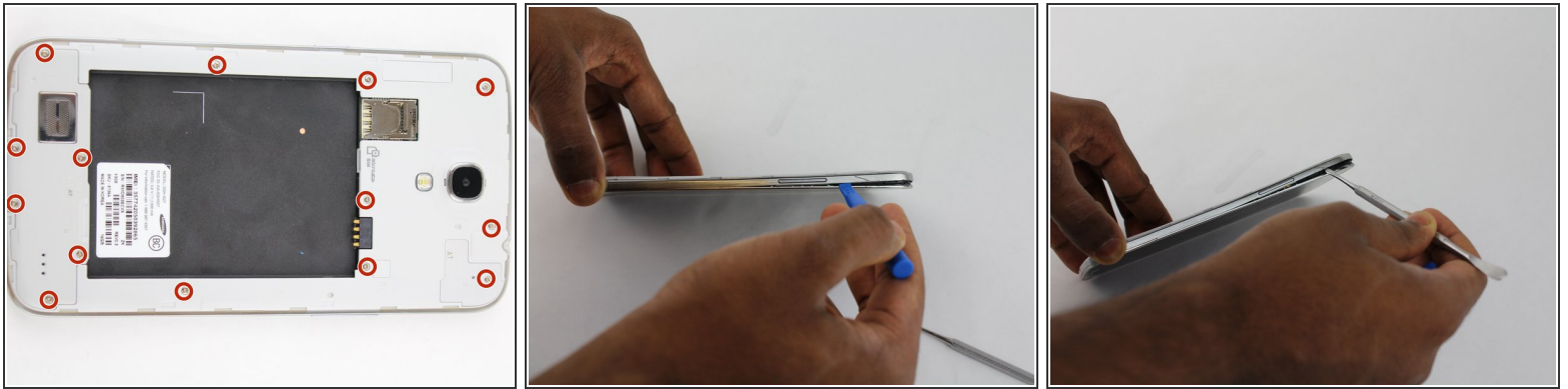
- Before starting, ensure device is completely turned off.
- On the back of phone, locate the slot on the top left corner.
- Insert plastic opening tool or fingernail and pull up on the back plate.
- With the corner released, slide your finger around the device between the back plate and the phone to release connectors.

## Step 2



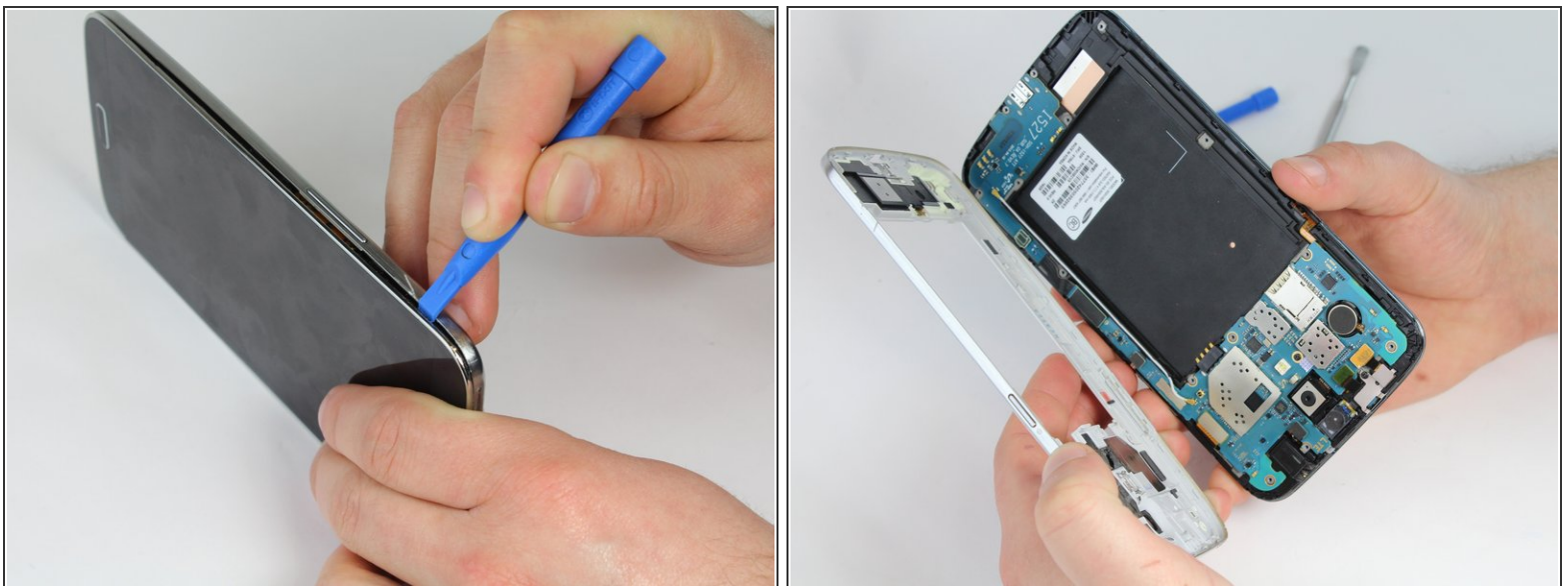
- Insert fingernail into the slot on bottom of battery and gently pull up.
- Remove the battery.

### Step 3 — Midframe



- Remove the 14 3.45 mm Phillips #000 screws from the assembly.
- Gently, insert plastic opening tool into seam above the volume buttons of your phone.
  - ⓘ You may substitute metal spudger for plastic opening tool to first start the opening of the seam. This may cause exterior cosmetic damage.

### Step 4



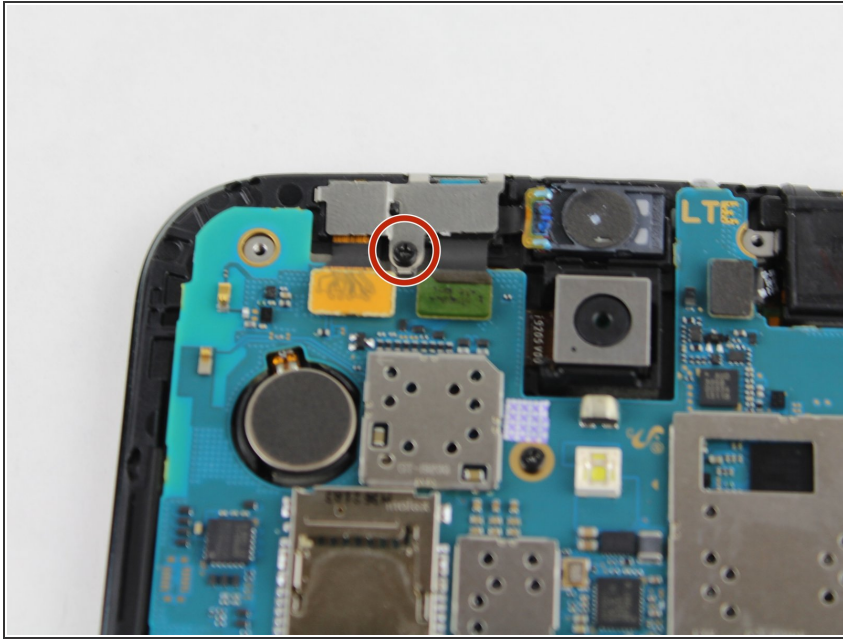
- Slowly slide plastic opening tool around the device to release all the connectors internal to the device.
- The device should easily come apart after the plastic opening tool is slid around the entire device.

During reassembly, ensure volume and power buttons align properly.

This document was generated on 2019-10-02 03:12:11 PM (MST).

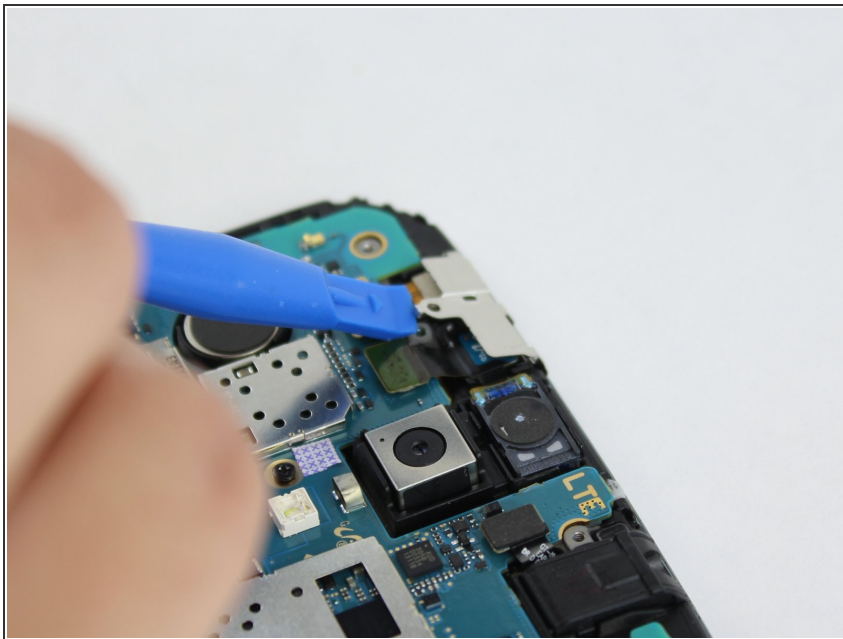


## Step 5 — Earpiece Speaker/LED Indicator



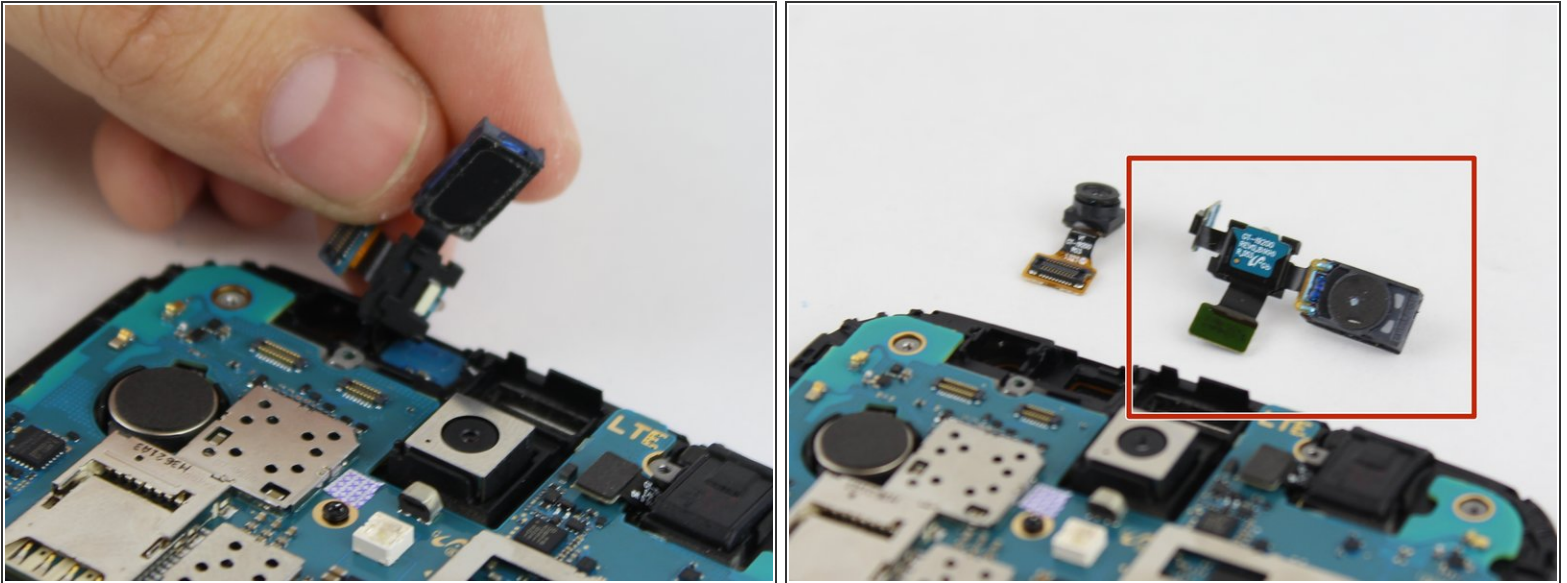
- Remove the black 2.55 mm Phillips #000 screw.

## Step 6



- Remove the metal cover with the plastic opening tool.

## Step 7



- Remove the motherboard clip from speaker assembly to the motherboard.
- Gently lift the speaker and LED assembly out of the device.
- Speaker assembly may be glued to the device, gently pry until it releases.

To reassemble your device, follow these instructions in reverse order.