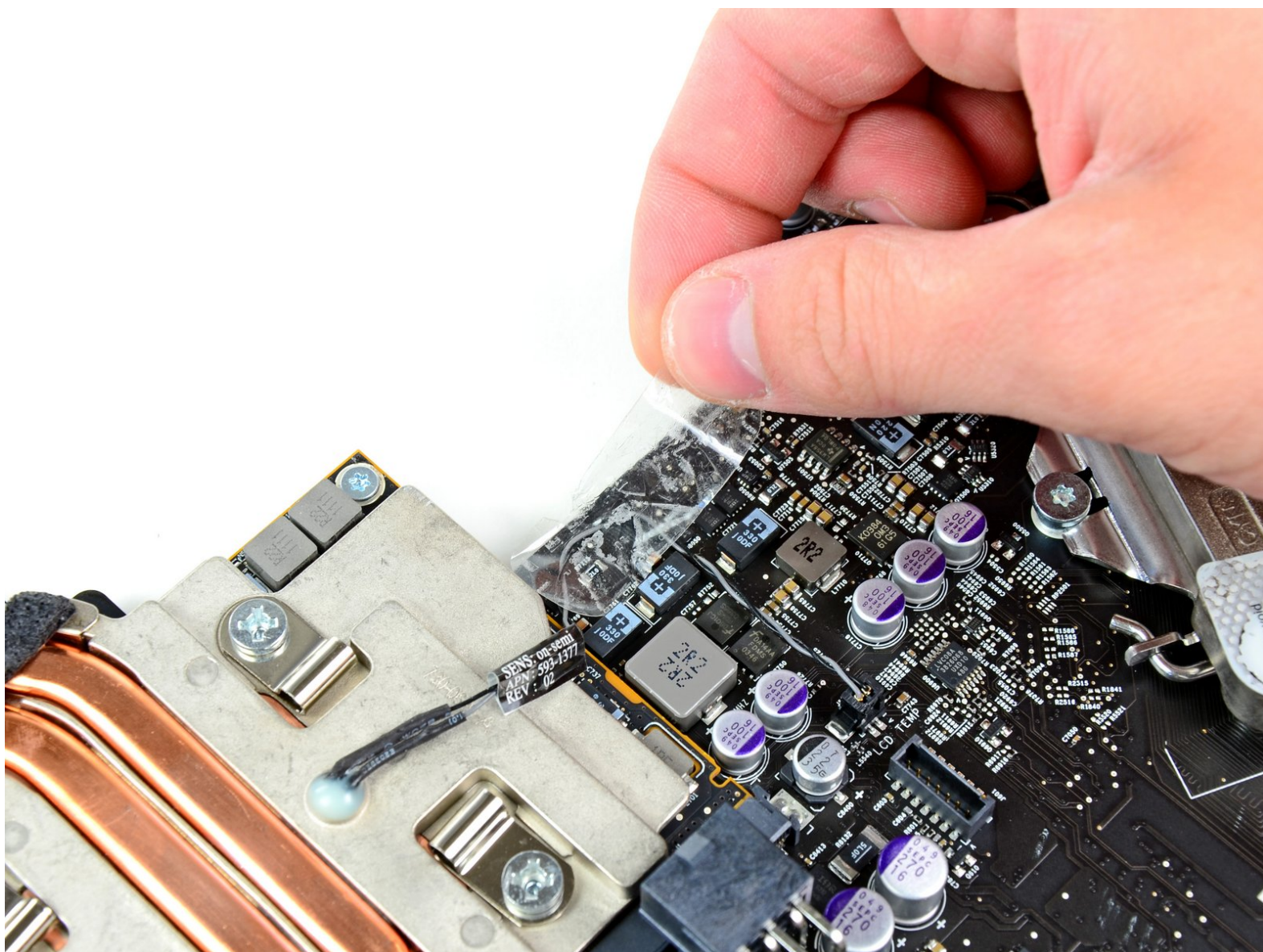




iMac Intel 21.5" EMC 2428 GPU Assembly Replacement

Prereq only.

Written By: Andrew Bookholt



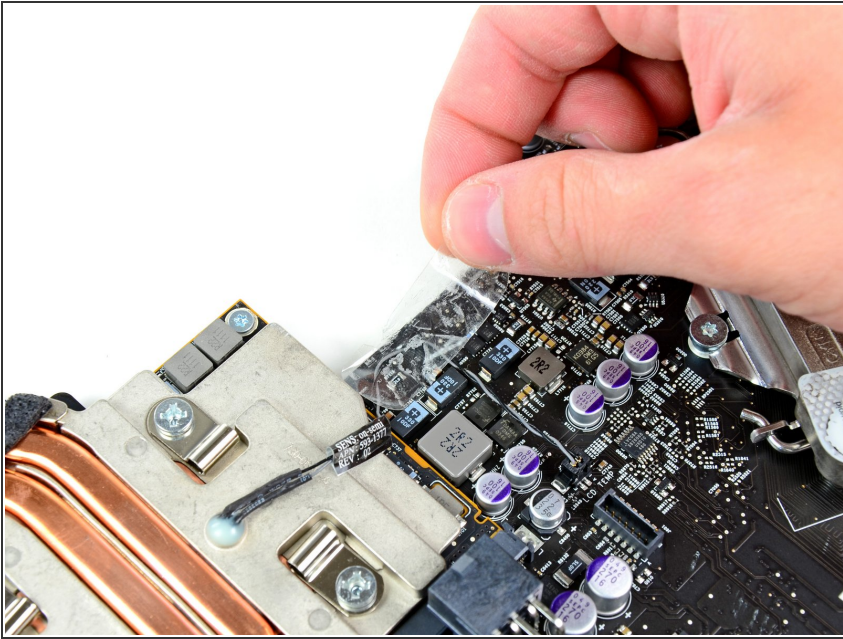
INTRODUCTION

Prereq only.

TOOLS:

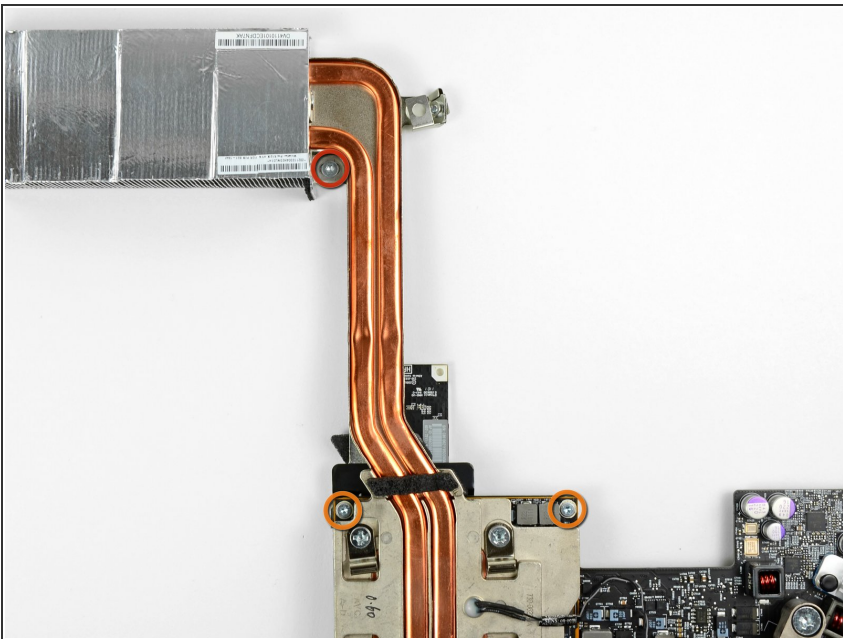
- [T10 Torx Screwdriver](#) (1)
 - [T8 Torx Screwdriver](#) (1)
-

Step 1 — GPU Assembly



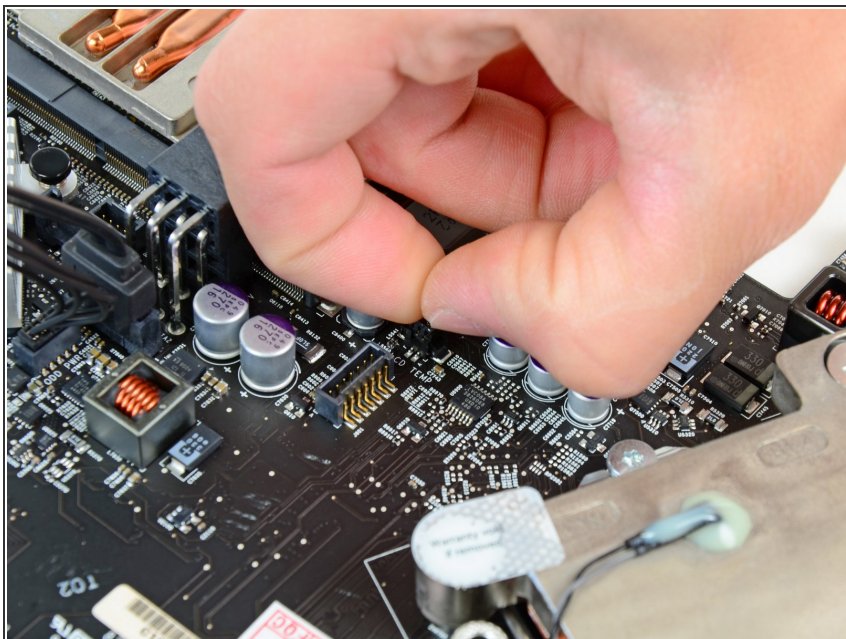
- Remove the strip of tape securing the GPU thermal sensor cable to the logic board.

Step 2




- Remove the following three screws:
 - One 4.2 mm T10 Torx screw
 - Two 5 mm T8 Torx screws

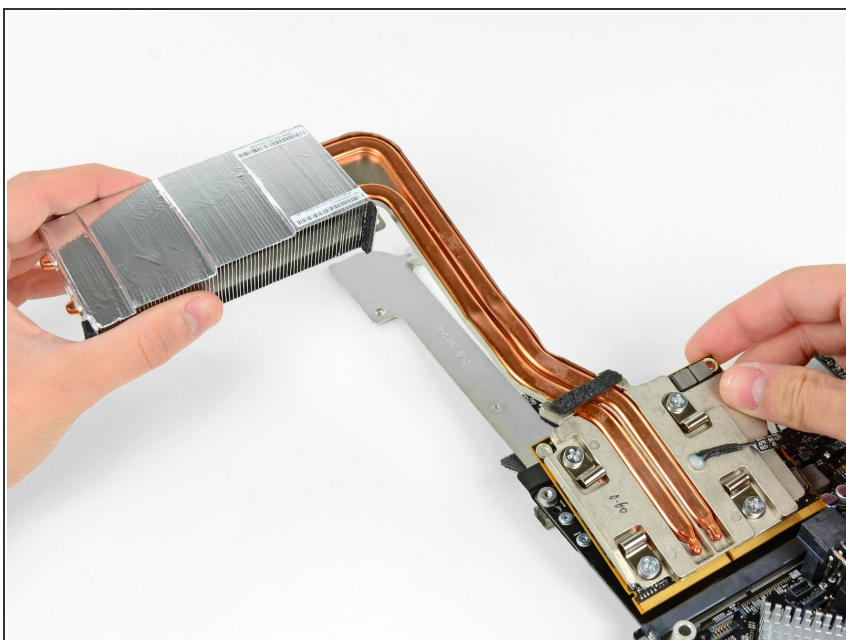
Step 3



- Grab the GPU thermal sensor cable connector and pull it straight up and out of its socket on the logic board.

 Do not pull the connector out by its cables.

Step 4



- Lift the GPU heat sink slightly and pull the GPU board out of its socket on the logic board.

To reassemble your device, follow these instructions in reverse order.