



OnePlus X Back Rear Panel Replacement

Replace the glass rear panel of the OnePlus X.

Written By: Natali Monge



INTRODUCTION

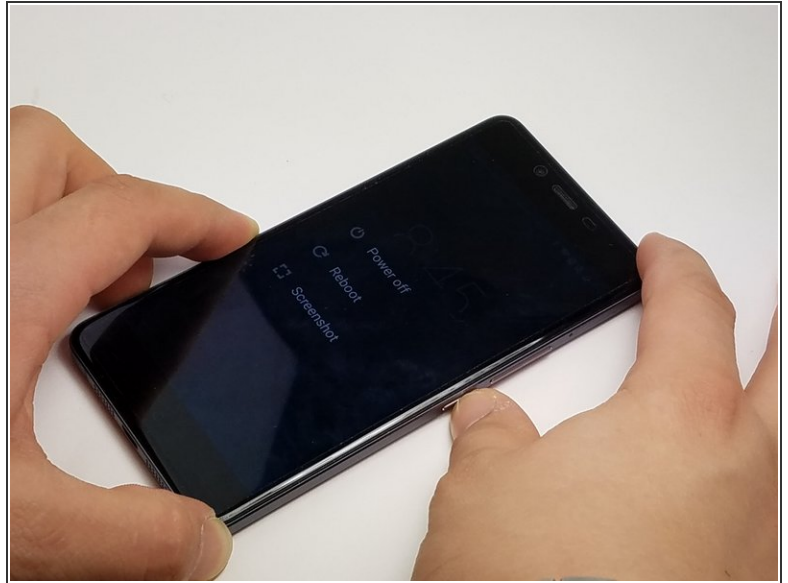
As great as the OnePlus X is, it is not indestructible. If a heartbreaking (or glass-breaking) fall occurs, use this guide to remove the rear panel.

TOOLS:

- [Jimmy](#) (1)
- [iFixit Opening Picks set of 6](#) (1)
- [Suction Handle](#) (1)
- [Heat Gun](#) (1)

HT100 Heat Tool

Step 1 — Rear Panel



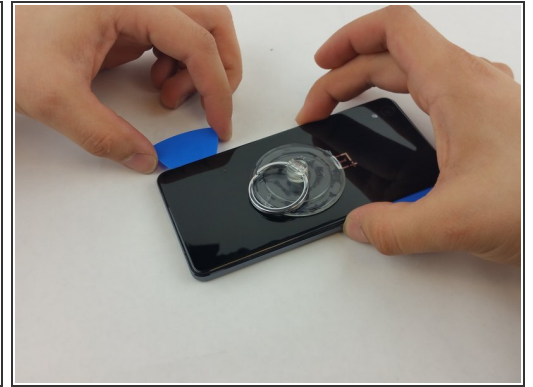
- Power off the phone by pressing the button on the right side of the phone, it will be the smaller button.
- Press and hold the button down for a few seconds, until the option "Power Off" appears on the screen.
- Select "Power Off" on the screen to turn off the phone.

Step 2



- Insert a SIM card removal tool into the small hole located on the top right corner of the phone, just above the volume buttons.
 - ⓘ If you do not have the original packaging or a SIM card removal tool, you may use a straightened out paperclip or something similar.
- Push the removal tool into the hole and the tray should pop out.
- Remove the SIM tray from the phone.

Step 3



- ⚠ Put on heat-resistant gloves and place the phone on a surface that will not catch fire or melt.
 - Using a heat gun, apply slow and even heat to the edges of the back panel.
- ⚠ DO NOT stay on one spot for too long, the heat gun can damage the phone if the heat is applied to the same area for a long period of time.
 - While heating the back panel, use a Jimmy to test if the adhesive is soft enough to allow the panel to separate from the device.
 - Carefully detach the back panel, using opening picks to hold the panel apart from the device.
 - Once most of the edges are separated from the device, attach a suction cup to the back panel.

Step 4



- Press the suction cup to the back panel to secure it.
 - With the help of the suction cup, pull up on the panel to completely detach it from the device.
- i** Use the suction cup to safely remove the panel from the device. As you work around the panel's edges, the lingering heat may cause the remaining adhesive to reattach the panel to the device, be sure to lift the back panel before the glue has time to set back.