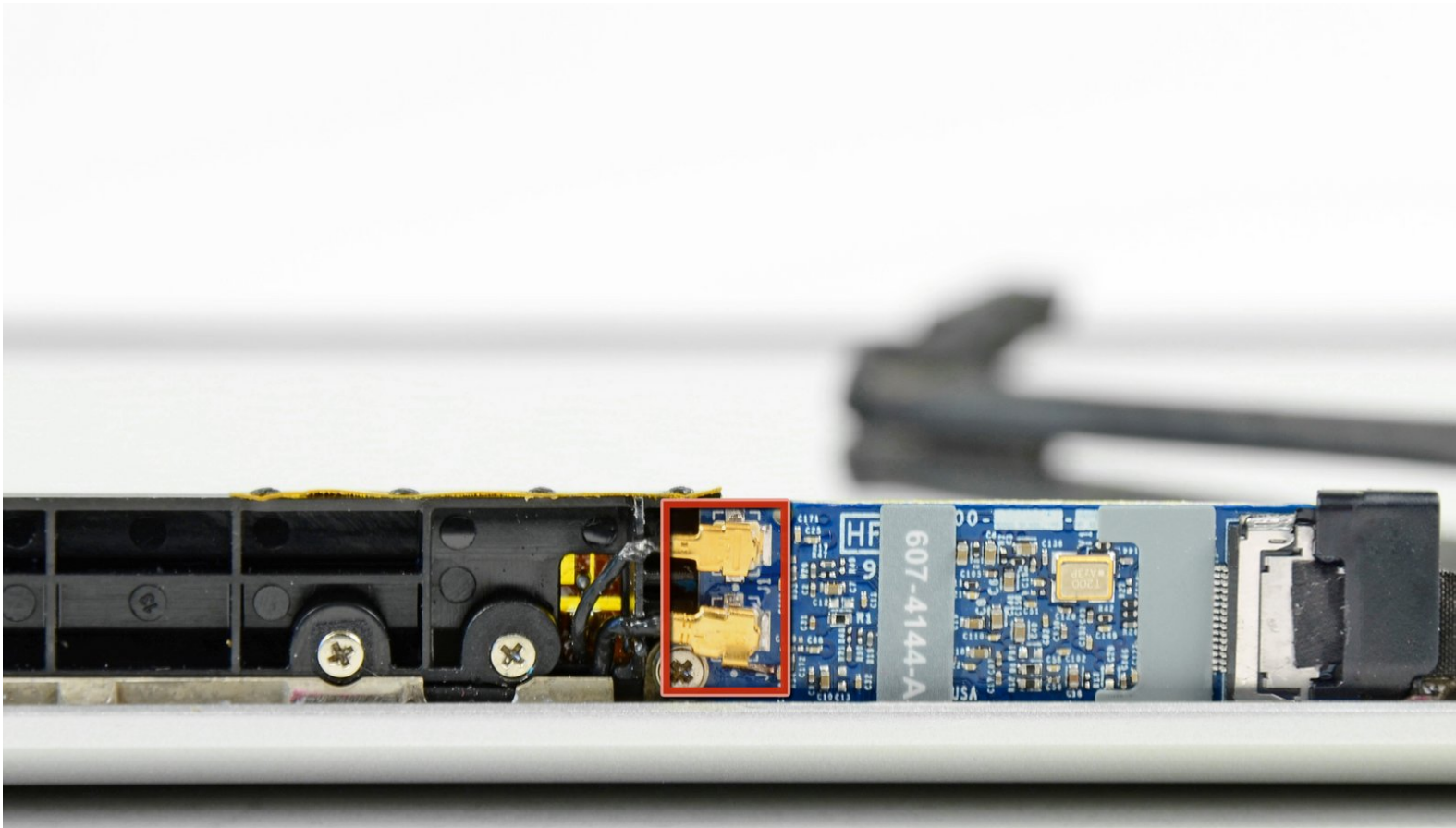




MacBook Pro 13" Unibody Mid 2009 AirPort Connectors Replacement

Prereq only.

Written By: Walter Galan



INTRODUCTION

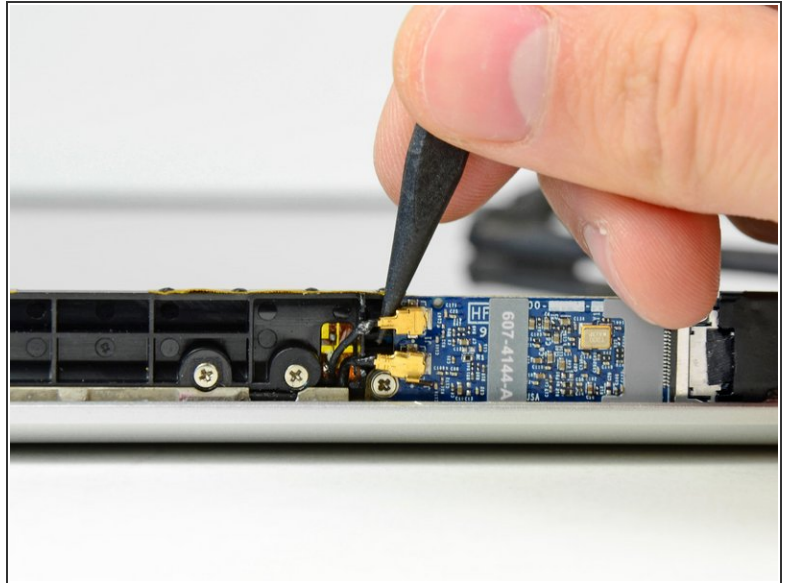
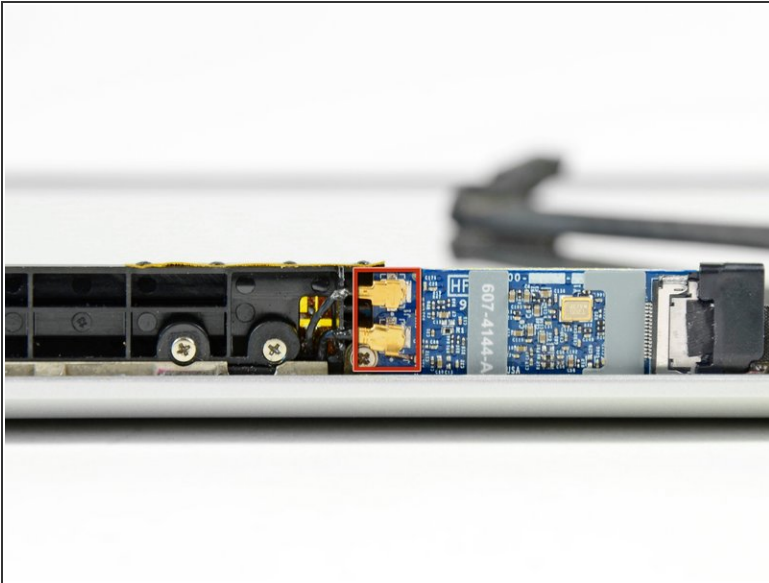
Prereq only.



TOOLS:

- [Spudger](#) (1)
-

Step 1 — AirPort Connectors



- Use the tip of a spudger to pry both AirPort antenna connectors out of their sockets on the AirPort board.

⚠ Be careful not to break the sockets off the AirPort board.

To reassemble your device, follow these instructions in reverse order.