



Black and Decker WP900 Power Cord Replacement

Is your device not turning on? A possible solution to this problem is to replace the power cord. This guide details the step-by-step process to replace this part.

Written By: Cameron



INTRODUCTION

This page gives instructions for disassembling the Black and Decker WP900 6-Inch Orbital Waxer and Polisher to the point where the power cable can be fully removed and replaced.

TOOLS:

- [iFixit Opening Tools](#) (1)
 - [Phillips #1 Screwdriver](#) (1)
 - [Flathead 3/32" or 2.5 mm Screwdriver](#) (1)
-

Step 1 — Power Cord




- Using the plastic tool, detach the handle tab as shown.

 Make sure the device is unplugged.

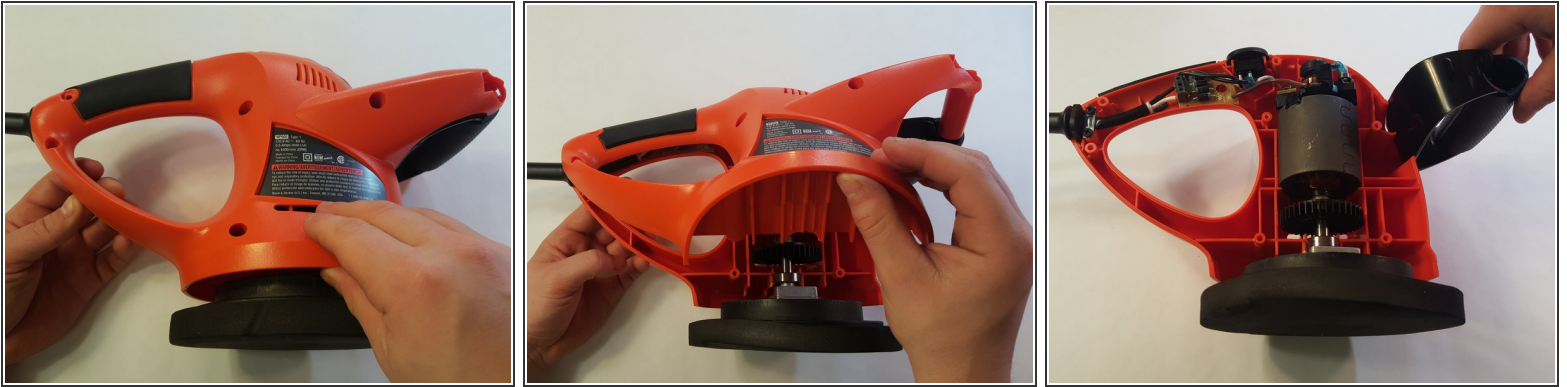
Step 2



- Using the Philips #1 screwdriver, unscrew all of the screws. There should be 8-30mm screws to remove.

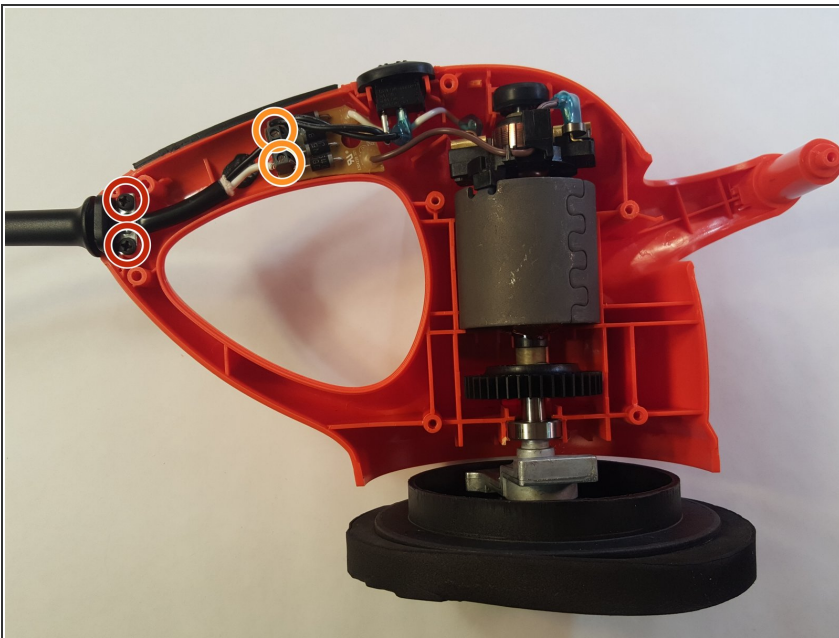
 Be sure to keep track of where each screw was placed in the device for later reassembly.

Step 3



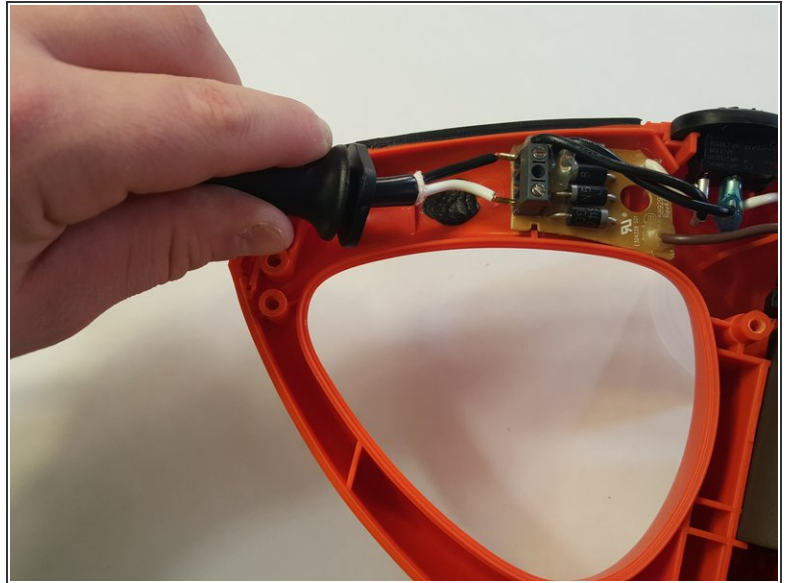
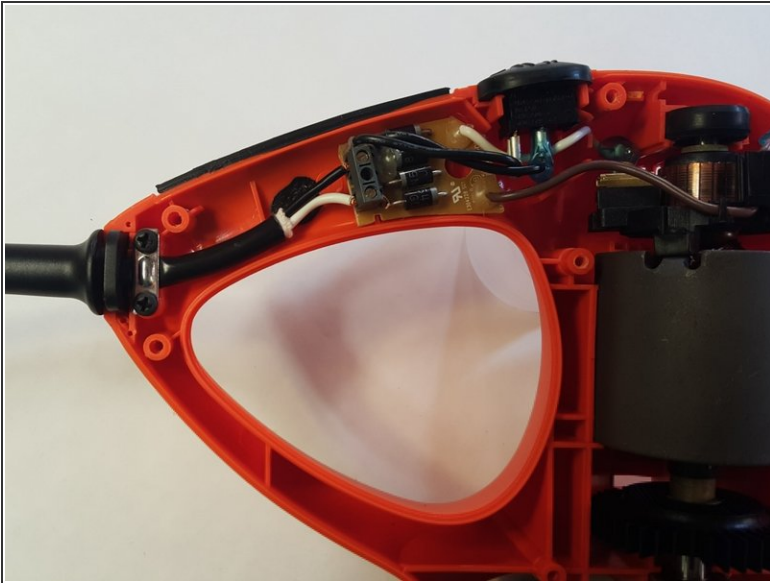
- Remove the back panel of the external casing, leaving all internal components resting in the front panel.
- Remove the black handle from the main external casing.

Step 4



- Loosen the power cord and control panel. Using the Phillips #1 screwdriver, remove two 22mm screws.
- ⓘ The metal bracket will detach with the two screws.
- Using the Flathead 3/32" screwdriver, remove two 22mm screws.

Step 5



- Gently pull the power cord out from the control module.
- ⓘ This is the part to be replaced. Remember to insert the black wire into the top port when installing the new cord.

To reassemble your device, follow these instructions in reverse order.