



ASUS ZenWatch Charging Cradle Circuit board Replacement

The charging cradle has a single circuit board that can simply be replaced if it fails to charge.

Written By: Wayne McClure



INTRODUCTION

Replacing the circuit in the charging cradle



TOOLS:

- [Metal Spudger](#) (1)
 - [Phillips #0 Screwdriver](#) (1)
-

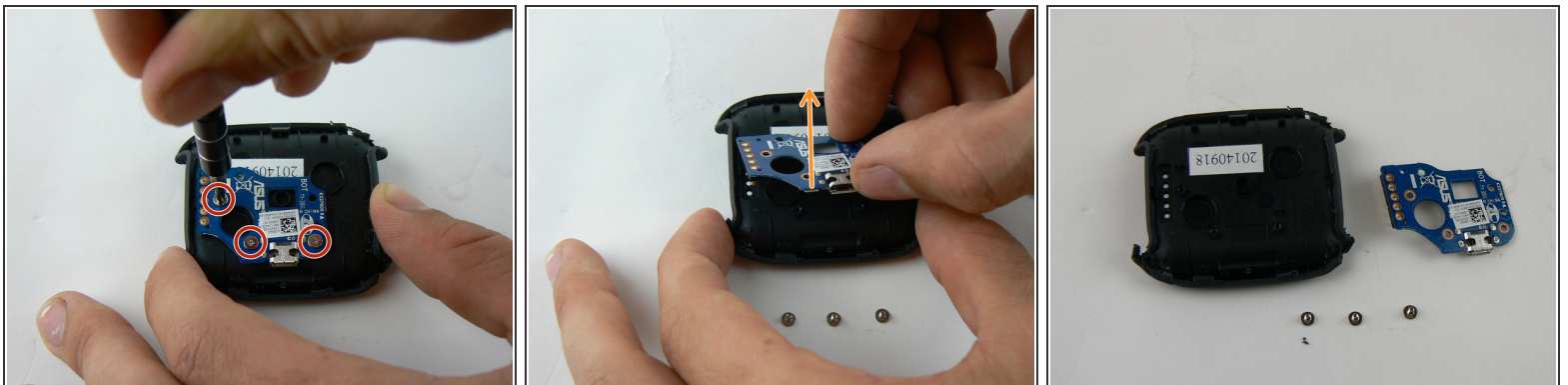
Step 1 — Charging Cradle Circuit board



- Using a metal spudger gently pry the plastic outer case apart

i Pry open a little bit on each side before trying to open fully

Step 2



- Use the PH0 sized Phillips screwdriver to remove the three screws (2mm) holding the board to the cradle.

- Gently pry up with your hands to pull the board off.

! Don't grab directly on the USB port as you may loosen or bust the connections.

To reassemble your device, follow these instructions in reverse order.

This document was last generated on 2017-07-02 11:45:51 AM.