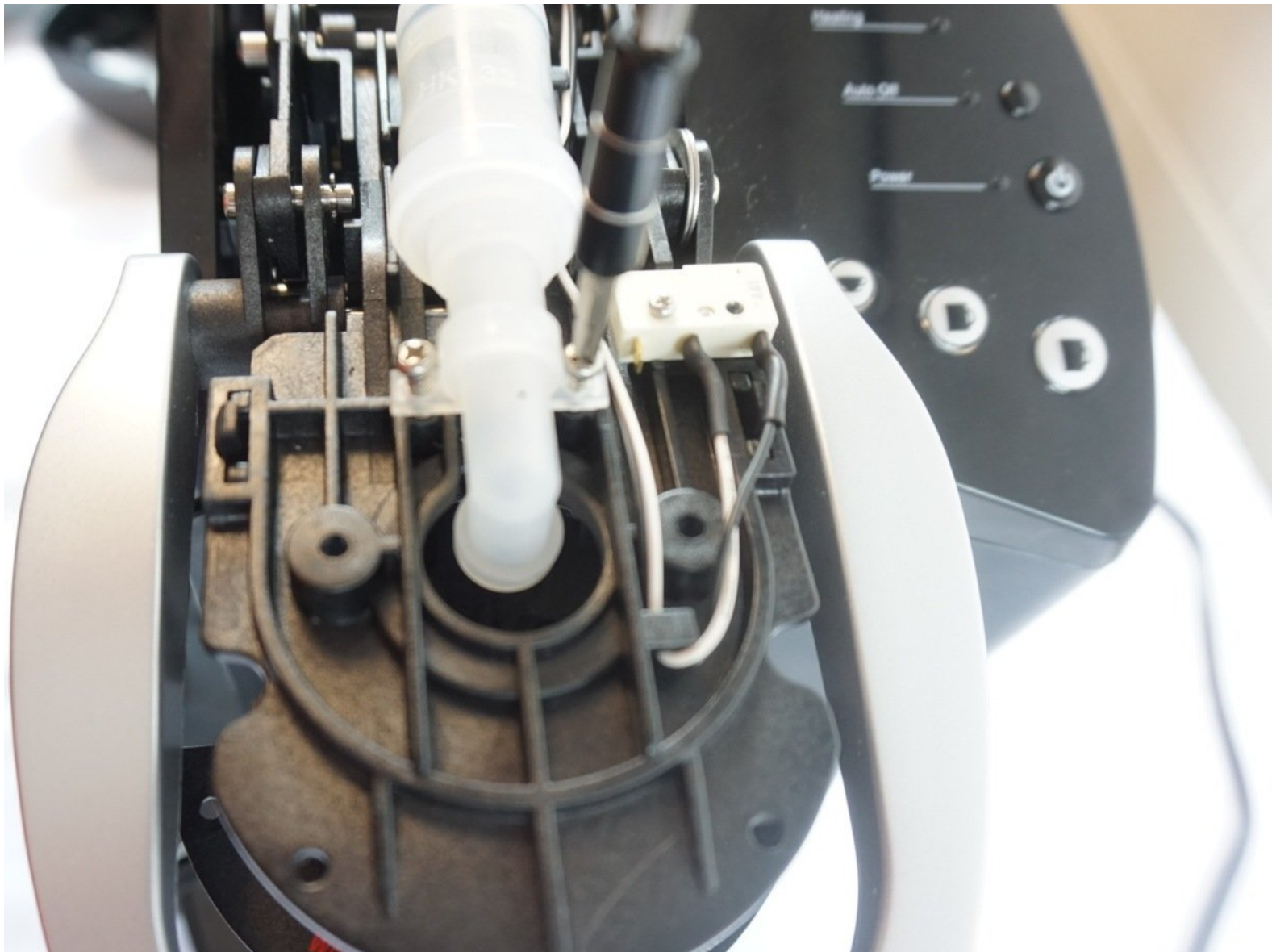




# Keurig K40 Top Water Pump Replacement

This guide will replace the top water pump.

Written By: Andrew Bornemann



---

## INTRODUCTION

This guide will demonstrate how to open the top unit of the Keurig K40. It will also demonstrate how to remove and replace the top water pump from a Keurig K40 device.

---

### TOOLS:

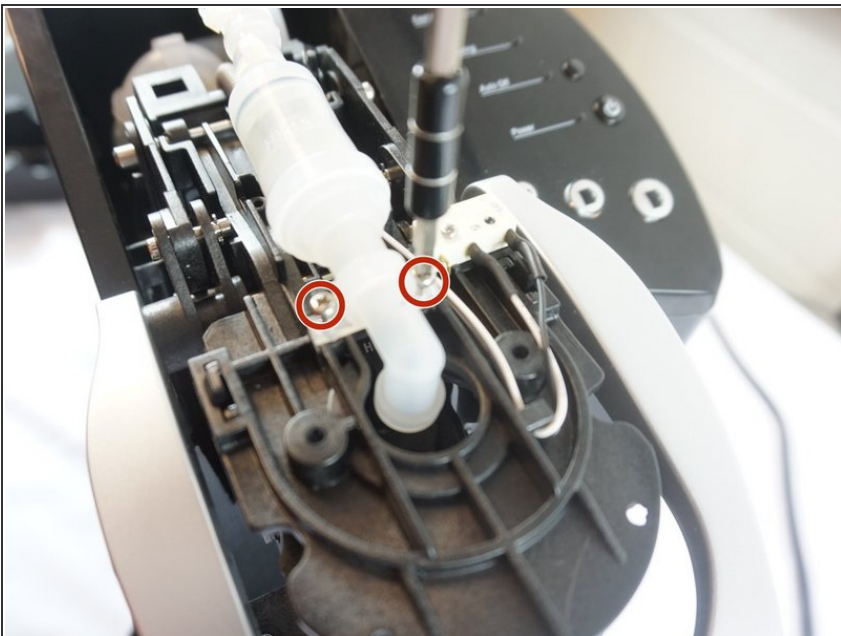
- [Phillips #0 Screwdriver](#) (1)
-

## Step 1 — Top Water Pump



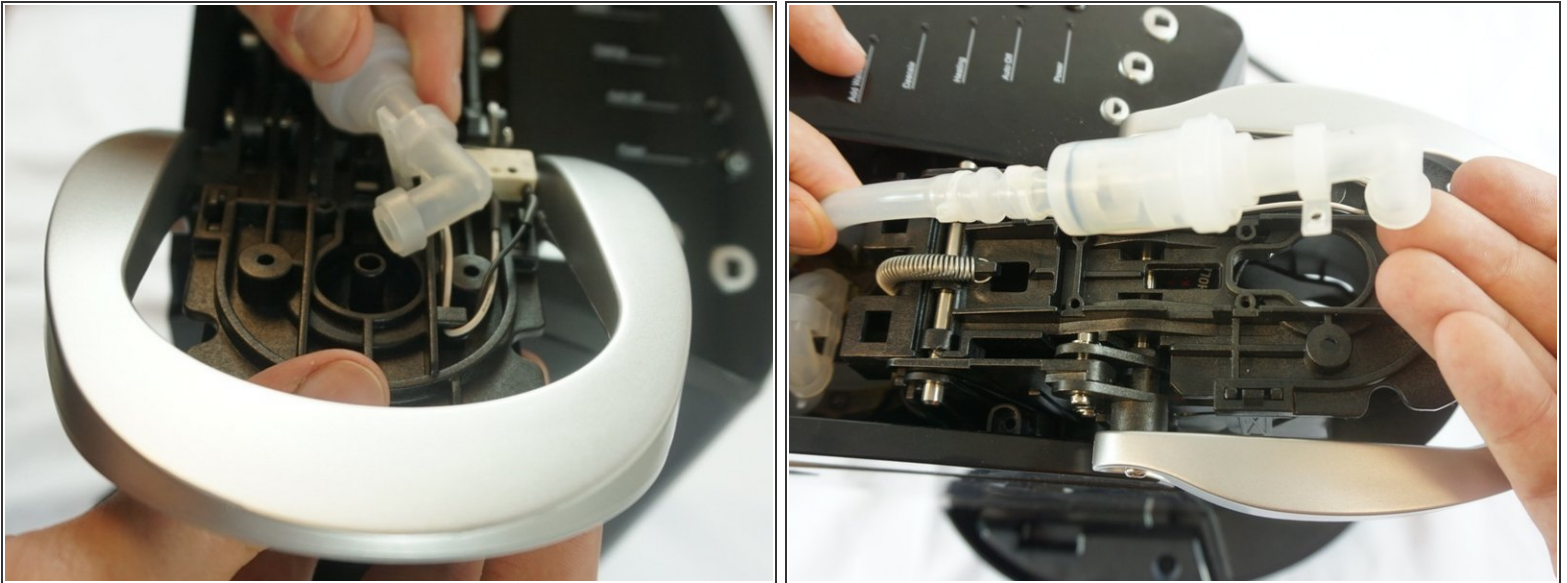
- Begin by removing the top cover from the device.
- ⓘ Remove the cover by gently rocking it back and forth with an emphasis on lowering the left side underneath an internal peg.

## Step 2



- Unscrew both 1.5mm screws located on the water pump.

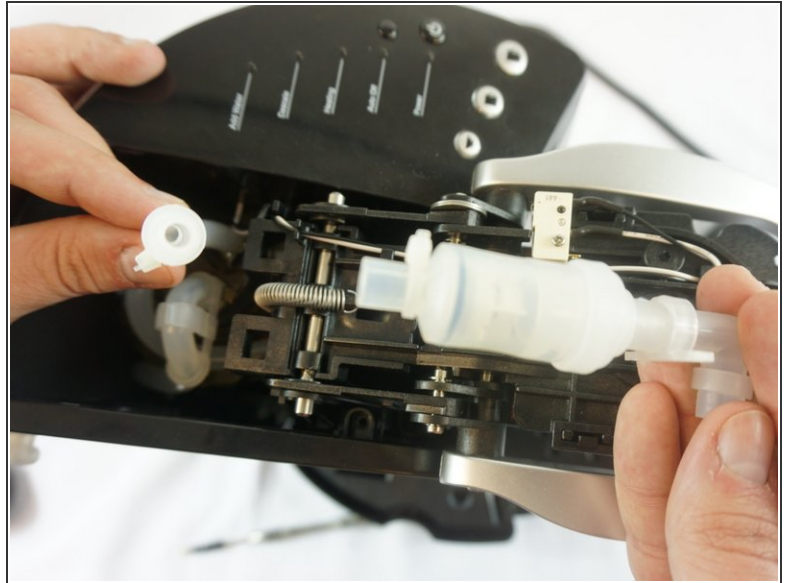
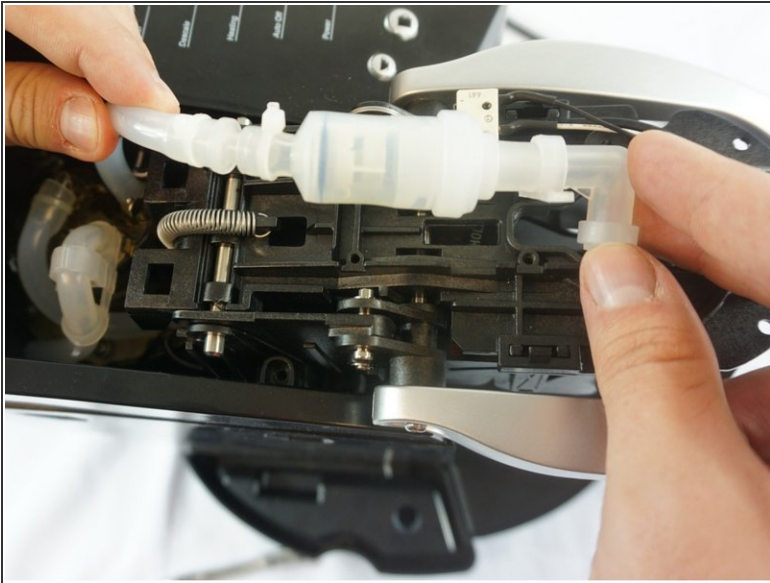
### Step 3



- Keeping one hand firmly placed on the device, tug upwards on the water pump until it is separated from the device.
- The water pump and pipe should now be loose and easy to move as shown.



## Step 4



- Pull on the point where the pipe meets the water pump.
- The pipe will come loose and the water filter will be free and ready to be replaced.

To reassemble your device, follow these instructions in reverse order.