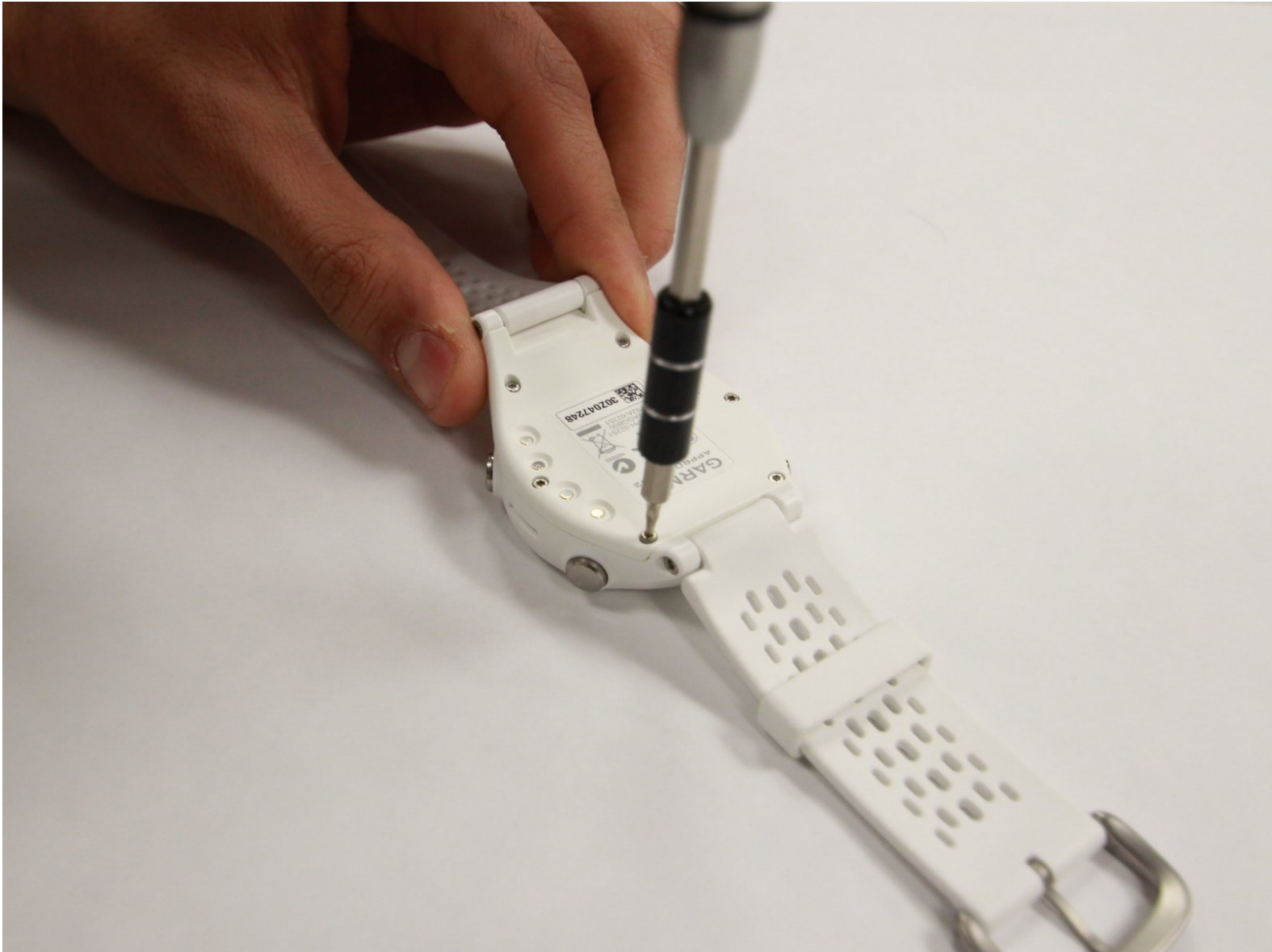




# Garmin Approach S2 Back Cover Replacement

This guide will illustrate how to access and remove the back cover for the Garmin Approach S2

Written By: Yufeng



---

## INTRODUCTION

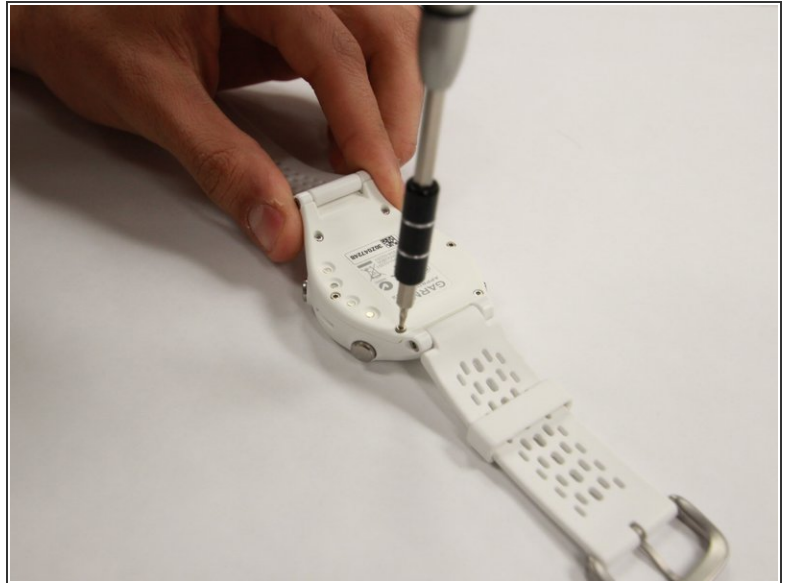
Want to see what is inside the case? Take off the back cover of the device.

---

### TOOLS:

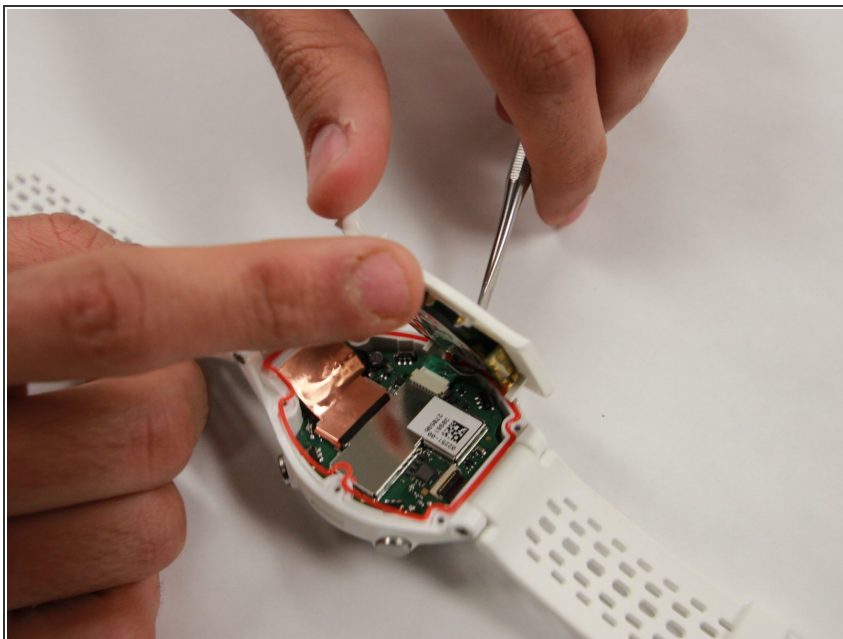
- [T5 Torx Screwdriver](#) (1)
-

## Step 1 — Back Cover



- Remove the six T5 Torx 6.32mm screws securing the back cover to the watch.

## Step 2



- Remove the back cover carefully.
- ⓘ Even after the screws have been removed, the back cover can still be quite difficult to take off. Moderate to extensive prying may be required. Be gentle, but *firm*.

To reassemble your device, follow these instructions in reverse order.