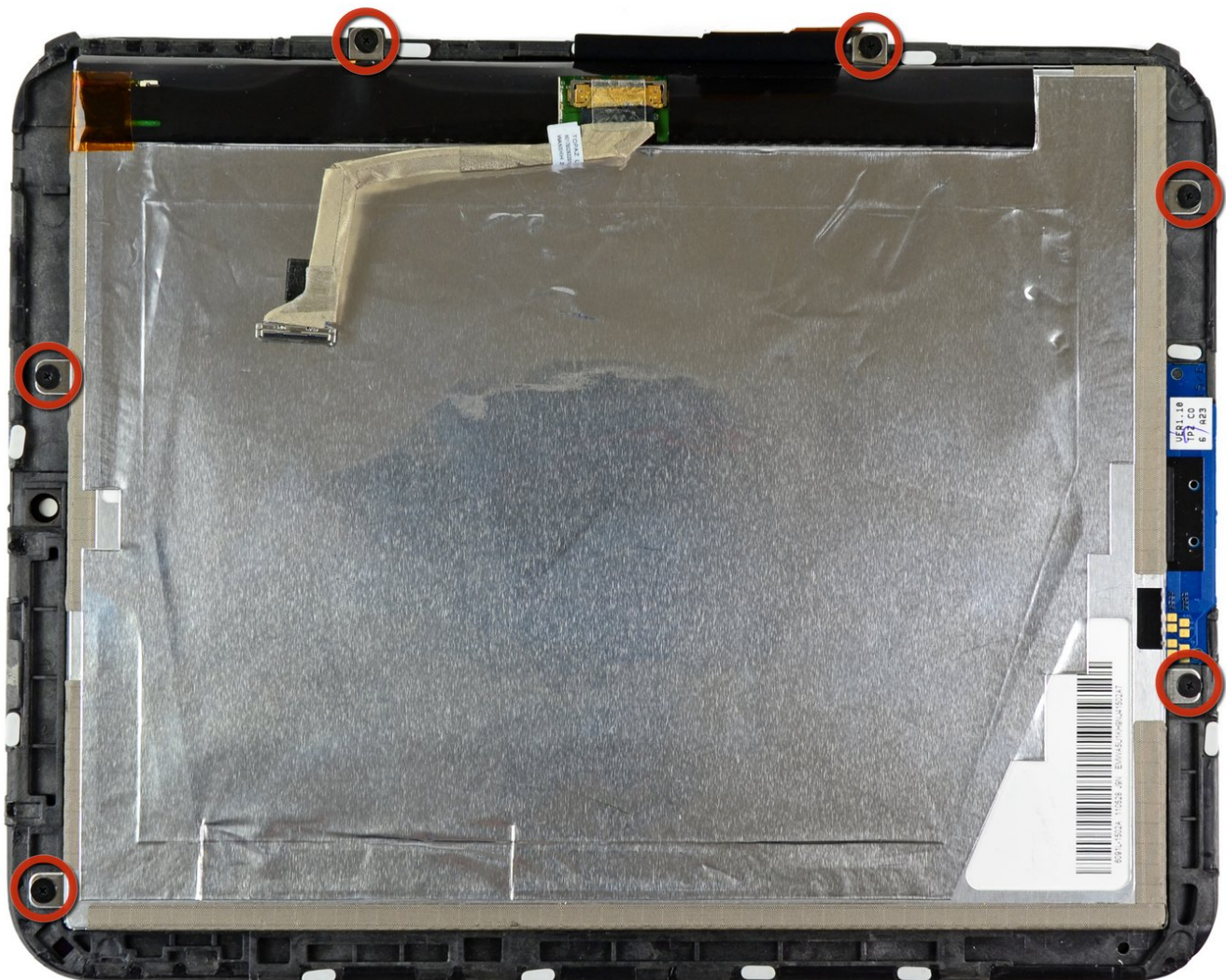




# HP TouchPad LCD Assembly Replacement

Prerequisite Only.

Written By: Andrew Bookholt



---

## INTRODUCTION

Prerequisite Only.



### TOOLS:

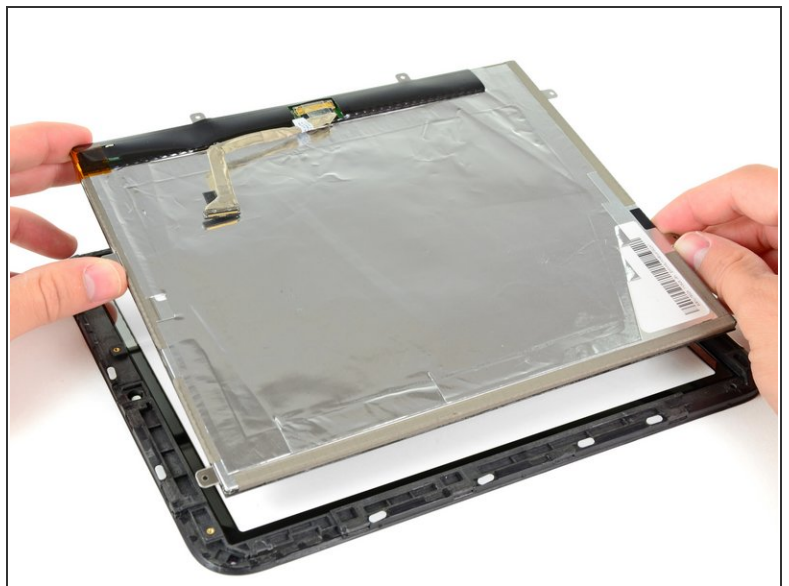
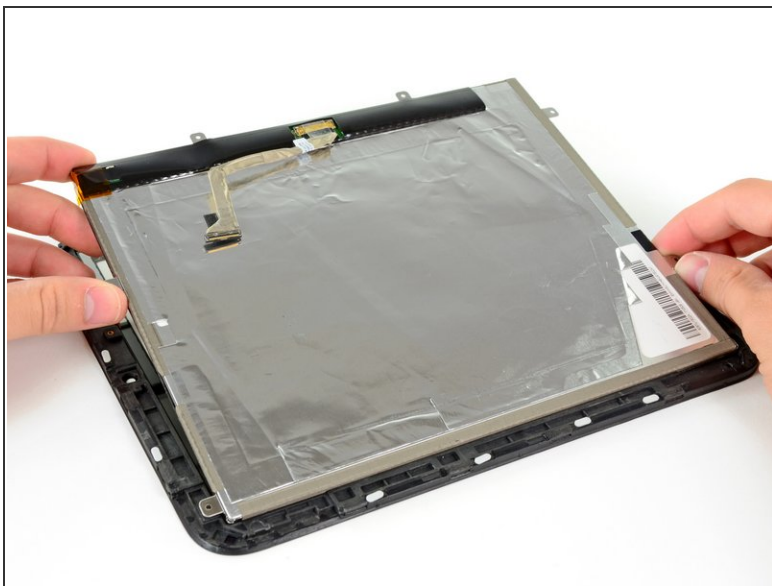
- [Phillips #00 Screwdriver](#) (1)
-

## Step 1 — LCD Assembly



- Remove the six 2.2 mm Phillips screws securing the LCD to the front panel.

## Step 2



- Lift up the LCD assembly and remove it from the front panel.

To reassemble your device, follow these instructions in reverse order.