



# Sony DCR-DVD 108 LCD Screen Replacement

The "no experience needed" way to remove a complex set of hardware.

Written By: Elijah DeWolf



## INTRODUCTION

The LCD screen is the side screen on your camera that flips open. It is unfortunately easily damaged permanently; here is a guide to at least check basic electronic connections.

---

### TOOLS:

- [Phillips #1 Screwdriver](#) (1)
-

## Step 1 — LCD Screen



- Remove the front facing screw adjacent to the LCD screen using a J1 Phillips screwdriver. The screw is 2.8 mm in length.

## Step 2



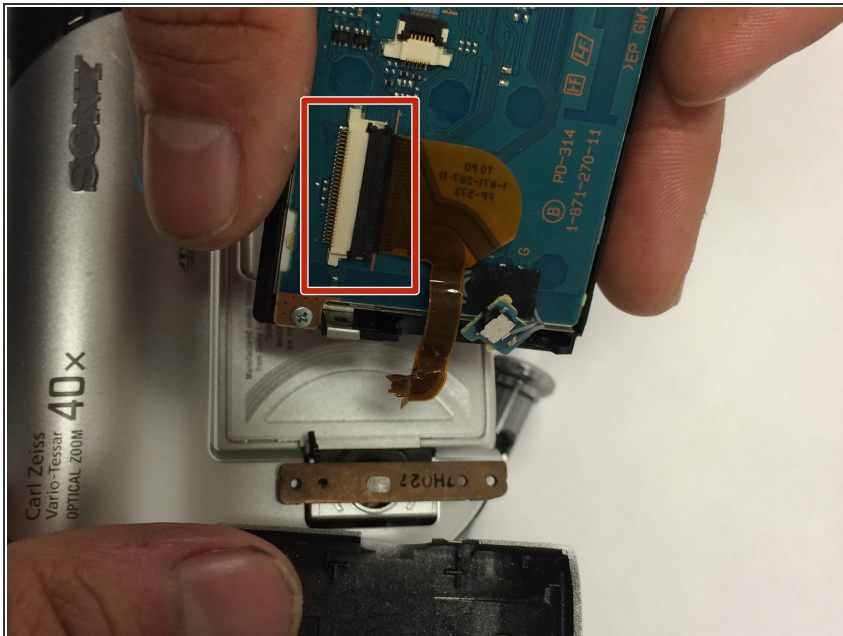
- Rotate the camera screen until the screw on the bottom is clearly visible, then unscrew with a Phillips #1 screwdriver. This screw is 2.8mm in length.

## Step 3



- Rotate camera again to find #1 Phillips head screw, the screw length is about 2.8 mm long. A J1 screwdriver is advised.

## Step 4



- Slowly pry apart the covers using a plastic spudger.
- Be sure to disconnect the ZIF connector holding the ribbon cable in place. To do this, use a spudger to flip the black tab up, and pull the cable out with tweezers.
- ⚠ This photo shows a torn ribbon cable. Be sure to disconnect the ribbon cable before fully removing the LCD cover, to avoid damage to the device.

To reassemble your device, follow these instructions in reverse order.