



Nintendo 3DS Upper Display Assembly Replacement

Nintendo 3DS upper display assembly removal.

Written By: David Hodson



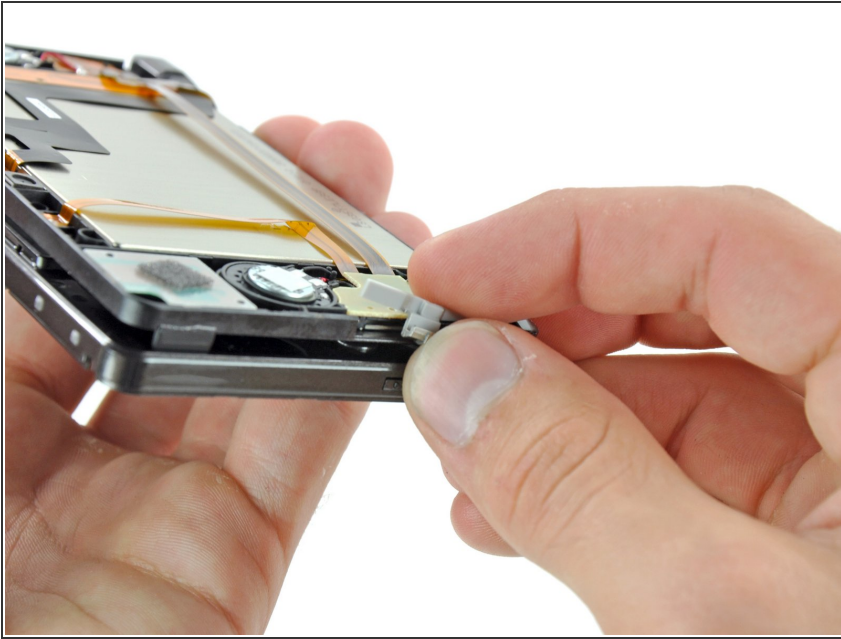
INTRODUCTION

This guide is a prerequisite to removing the upper LCD, speakers, Wi-Fi antenna, and cameras.

TOOLS:

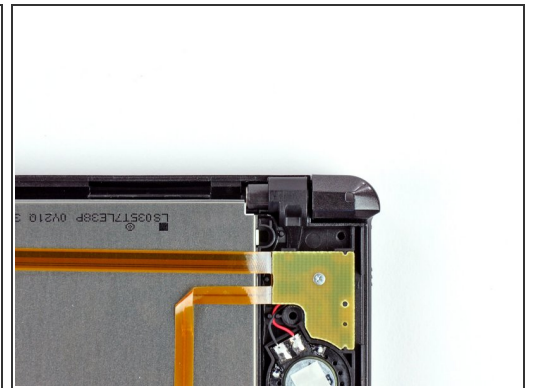
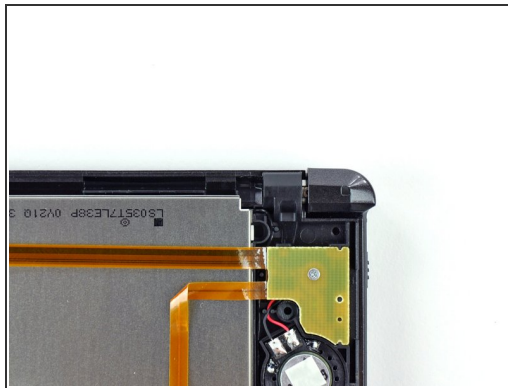
- [Metal Probe](#) (1)
-

Step 1 — Upper Display Assembly



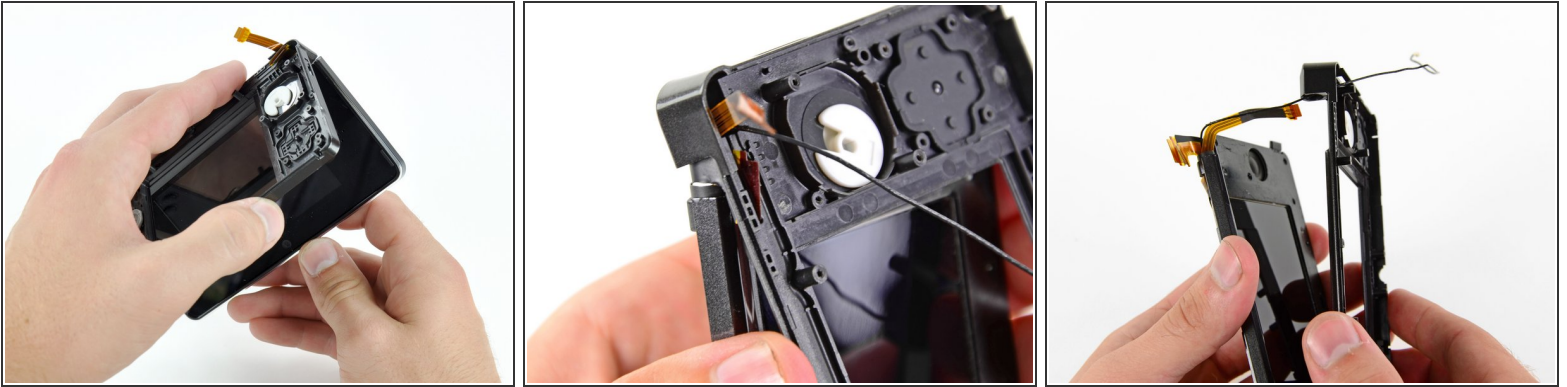
- Remove the 3D adjustment switch from the front display bezel.
- ⓘ This step is not necessary for disassembly, but the switch is likely to fall out on its own. By removing it yourself, you reduce the chance of losing it.

Step 2



- Insert a metal probe into the space above the ABXY buttons with the point touching the metal hinge.
- Push the hinge towards the center of the upper case. This will require a fair amount of force.
- ⓘ Before and after images of the hinge location when looking at the back of the upper display are shown.

Step 3



⚠ Before proceeding, note how the 3 ribbon cables are oriented (what direction the gold contacts face) and layered together (which cable is on top of which). The cables are too short to reach if they are threaded through in any other orientation.

- Slowly pull the upper display assembly away from the upper case.
- Make sure that the various ribbon cables are being fed through the slit in the upper case.
- Separate the upper display assembly from the upper case.

To reassemble your device, follow these instructions in reverse order.