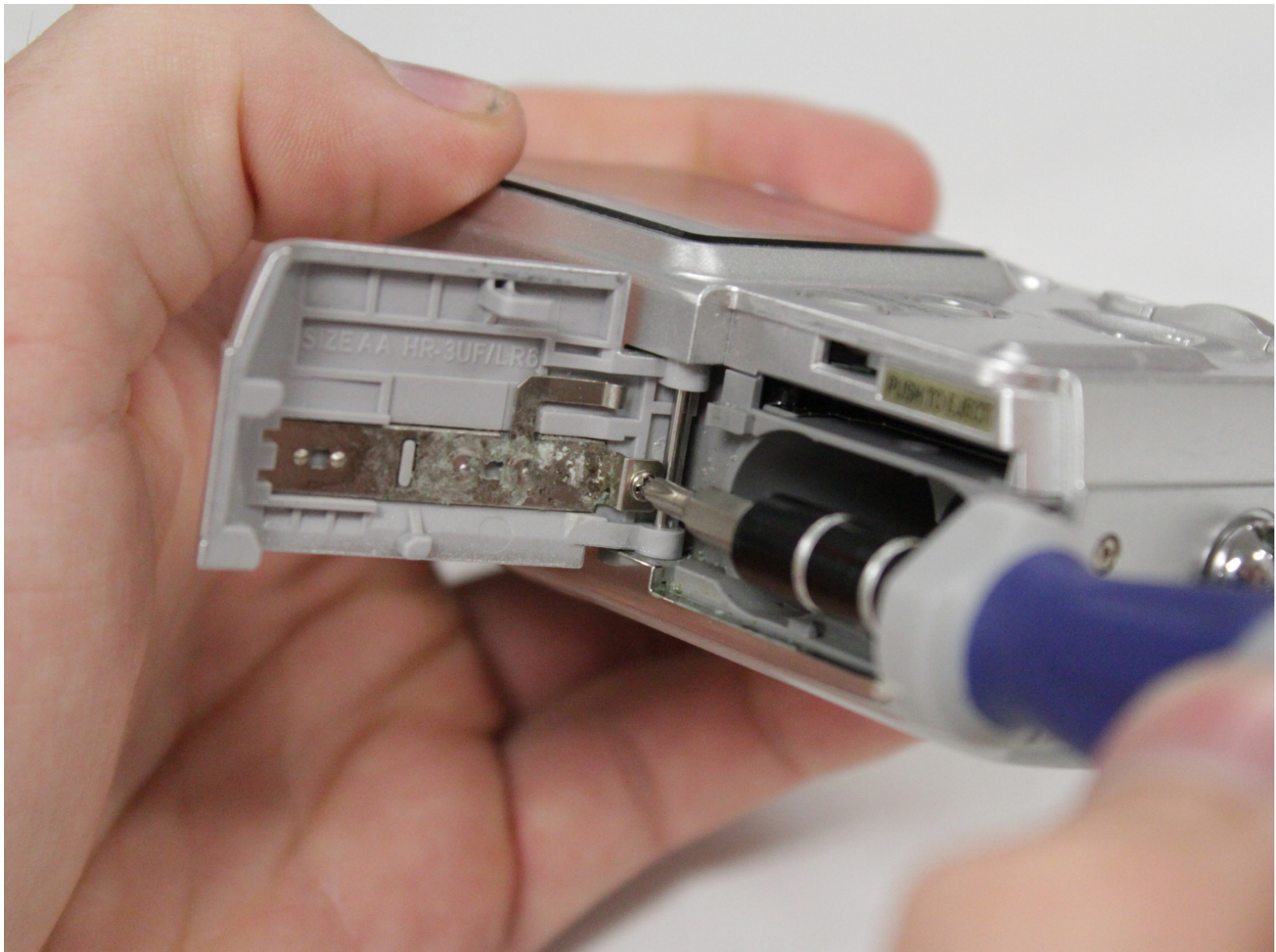




Fujifilm FinePix A350 Battery Contact Replacement

This guide offers instruction to remove and replace the battery contact.

Written By: Jaxon Cramer



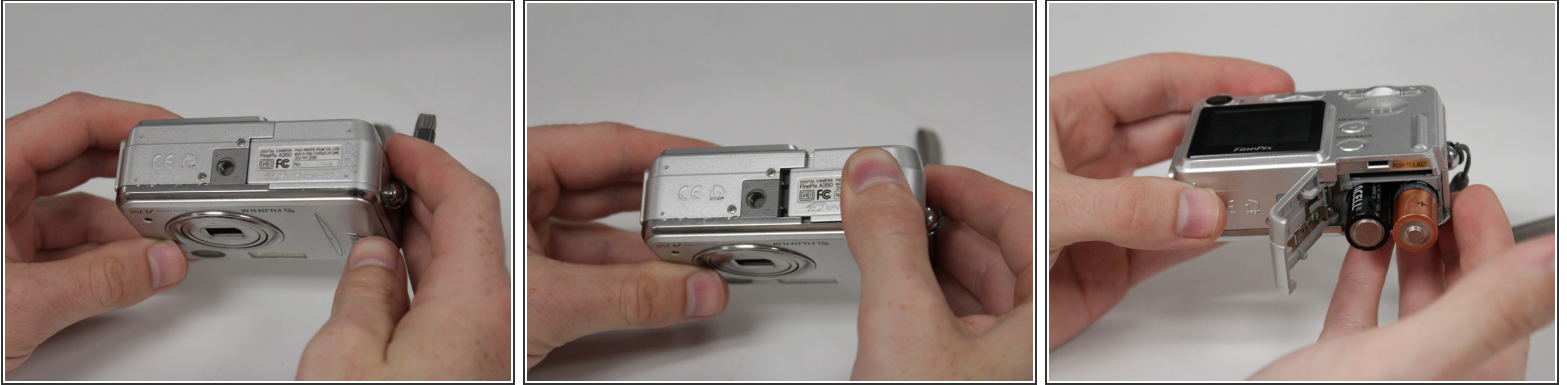
INTRODUCTION

This guide is useful in the event that metal oxides (such as rust) accumulate on the battery contact and cause intermittent power failure.

TOOLS:

- [Phillips #0 Screwdriver](#) (1)
-

Step 1 — Batteries



- Locate the battery hatch on the bottom side of the camera, opposite the side with the power button.
- Using your thumb, slide the hatch away from the center of the camera.
- Flip the hatch toward yourself to open it. The batteries are spring-loaded; once the hatch is open, they will protrude far enough to be removed by hand.

Step 2 — Battery Contact



- On the underside of the battery hatch, locate the single 3.0 mm screw connecting the battery contact to the hatch. Remove it using a Phillips screwdriver with a #0 bit.
- Lift the contact from the end where the screw was located and pull away from the hatch to remove it.

To reassemble your device, follow these instructions in reverse order.

