



Grace Digital Mondo Remote Circuit Board Replacement

This guide will show you how to disassemble your remote in order to replace/fix any given components, including the circuit board.

Written By: Zachary Nelson



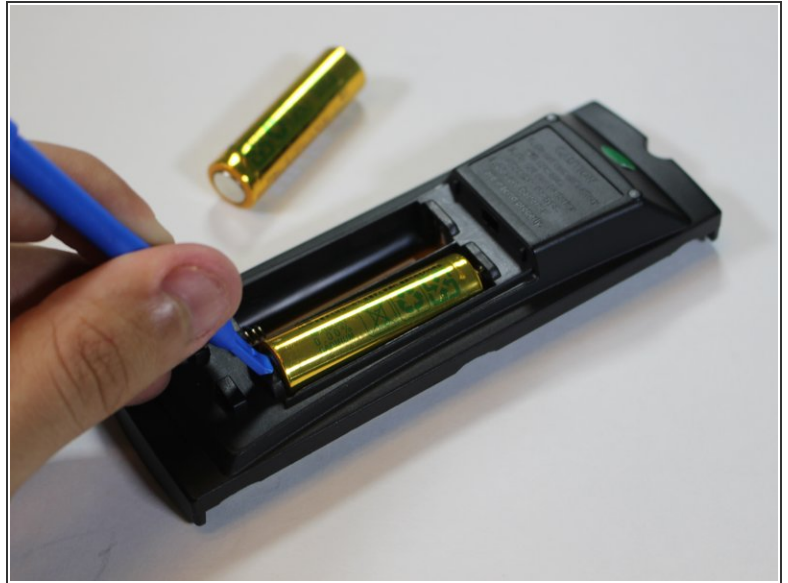
INTRODUCTION

The replacement is a very simple fix to any problem you may have with your remote. All you need are your hands and plastic spudger to disassemble this remote.

TOOLS:

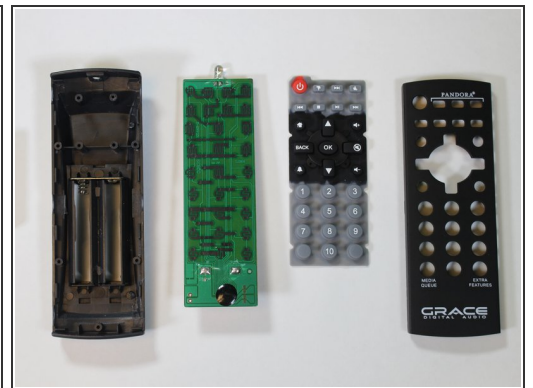
- [Spudger](#) (1)
-

Step 1 — Remote Circuit Board



- Slide back the battery cover.
- Remove the (2) AA batteries by prying upwards with a plastic spudger from the (+) terminals.

Step 2



- Locate the (6) clips that hold together the remote.
 - Gently separate the cover with a plastic spudger.
- ⚠ Fully disengage the clips before beginning to gently pry open the remote. This might result in breaking the thin plastic shell and making the clips non-functional.

To reassemble your device, follow these instructions in reverse order.