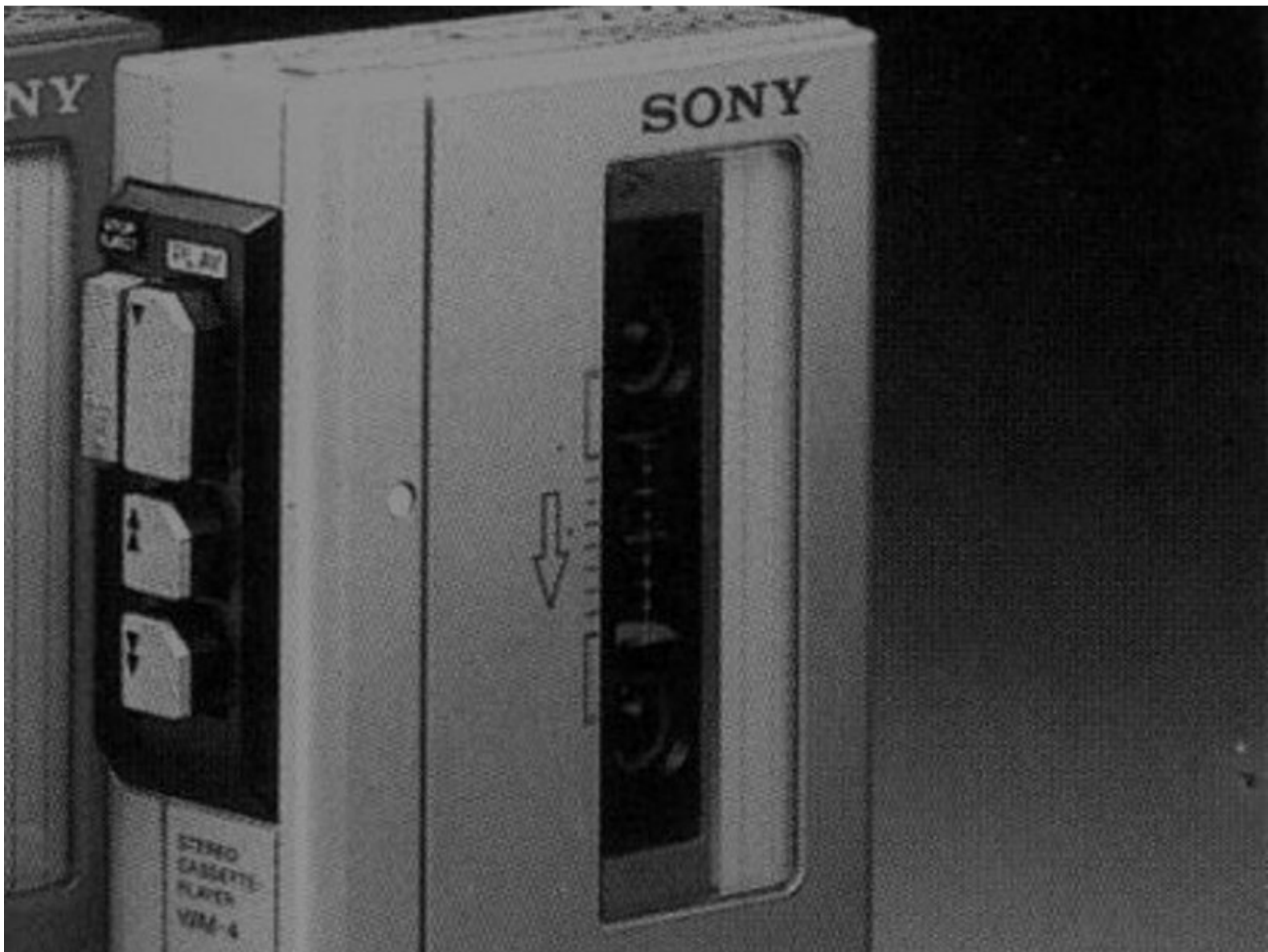




# Sony Walkman WM-4 Teardown

In this guide, you will learn how to open a Sony walkman WM-4 (a second generation cassette player).

Written By: lenzo



---

## INTRODUCTION

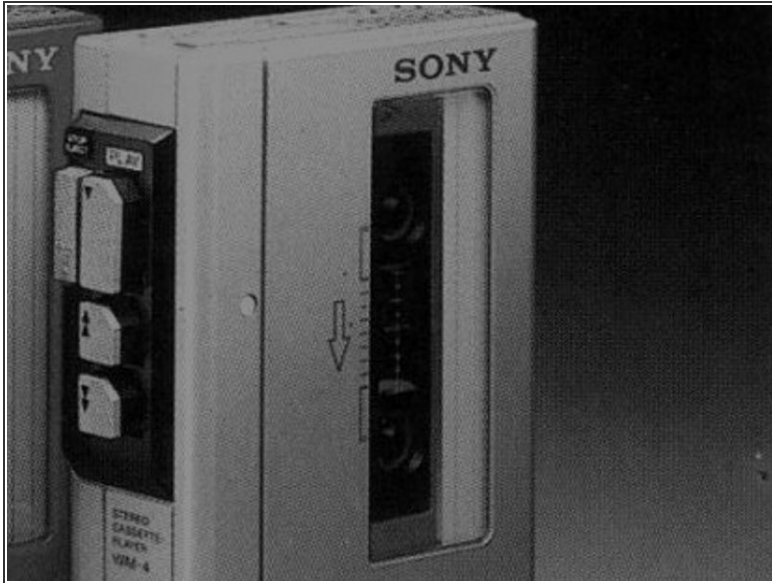
Before the introduction of MP3 players, people bought their own music. Sony Walkman WM-4 is a second generation cassette player, which was highly popular during this time. This guide tells you how to open a Sony Walkman WM-4.

---

### TOOLS:

- [iFixit Opening Tools](#) (1)
  - [Spudger](#) (1)
  - [64 Bit Driver Kit](#) (1)
-

## Step 1 — Sony Walkman WM-4 Teardown



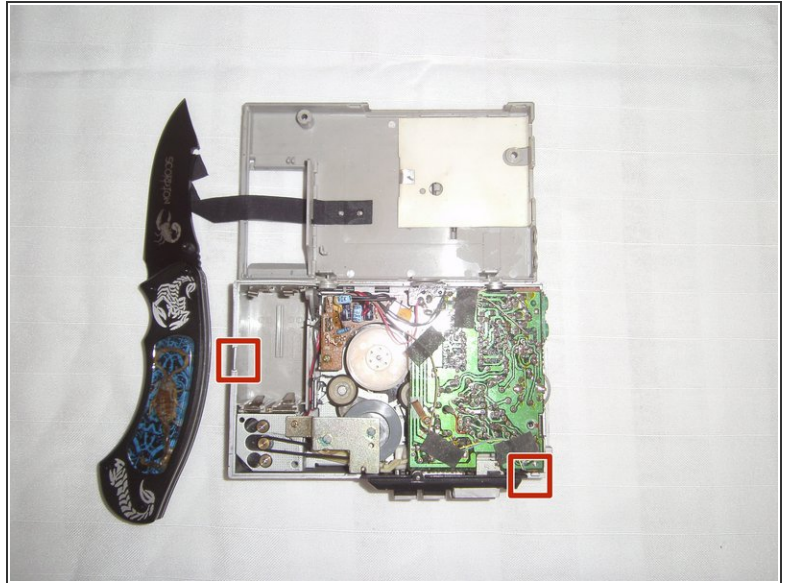
- Flip the Sony Walkman so that its rear side faces you.
- Use a screwdriver to remove the two screws from the surface of the Walkman.
- Press the battery plate slightly with your thumb and slide it downwards. This will open the battery compartment.
- Remove the batteries from the Walkman.

## Step 2



- Turn over your Walkman and gently press the cover to open the cassette holder.
- When the cassette holder is opened, you can see two more screws.
- Using a screwdriver, remove the two screws.

### Step 3



- Use a plastic opening tool or a spudger to push the tabs. This will remove the cover and open the Walkman.
  - ⚠ Be careful so you don't break the tabs!
- Once the Walkman is opened, you can troubleshoot for any issues, remove the old wires and attach new ones, or even reassemble the Walkman.