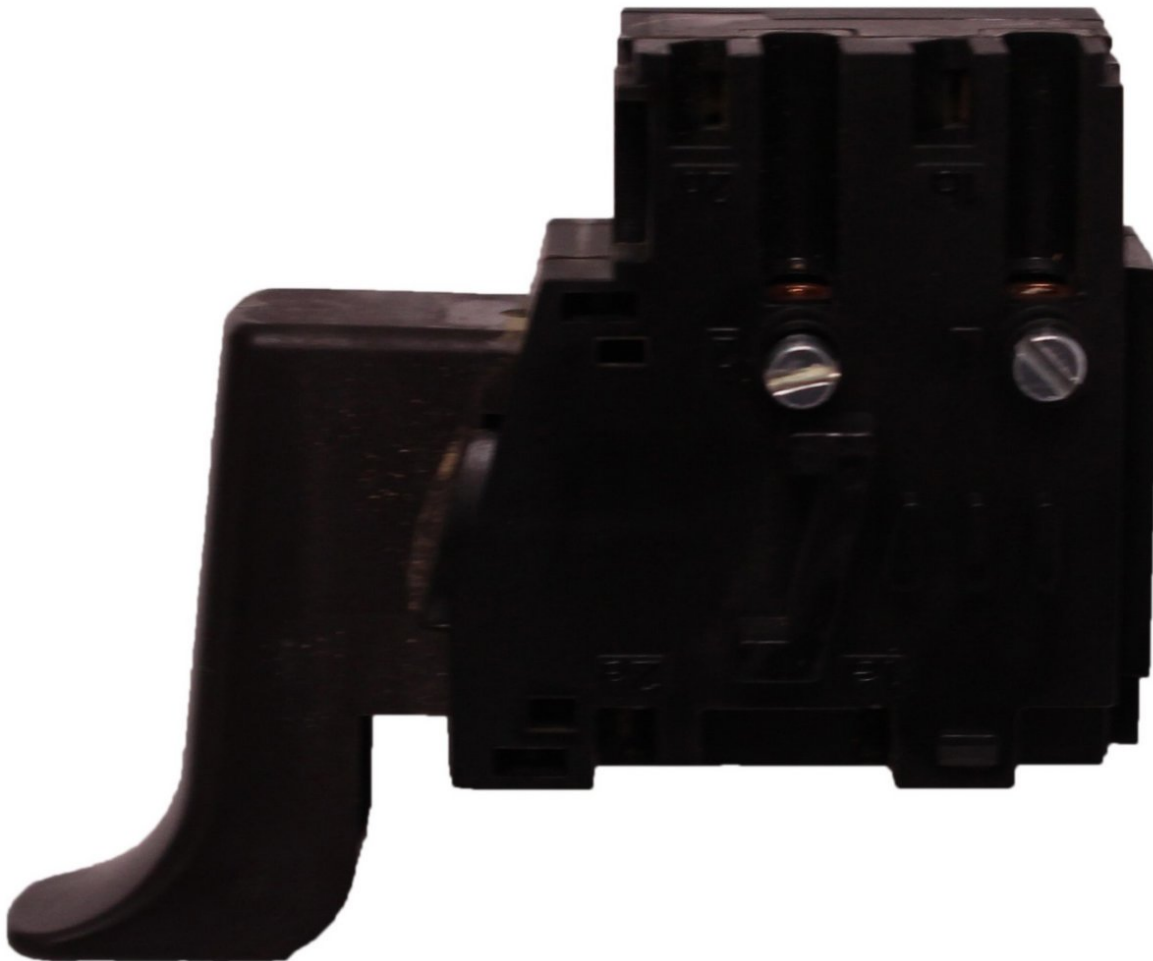




# Bosch 3727DEVS On/Off Switch Replacement

Replacing On/Off Switch with a new one. The On/Off switch has to be pressed so the sander will operate.

Written By: Peter Brouhle



## INTRODUCTION

Purchase a new On/Off Switch. The sander should be unplugged from any power sources. Make sure you organize the removed screws, so you can reinstall them in the correct location.

---

### TOOLS:

- T20 Torx Screwdriver (1)
- Flathead 3/32" or 2.5 mm Screwdriver (1)

### PARTS:

- On/Off Switch (1)

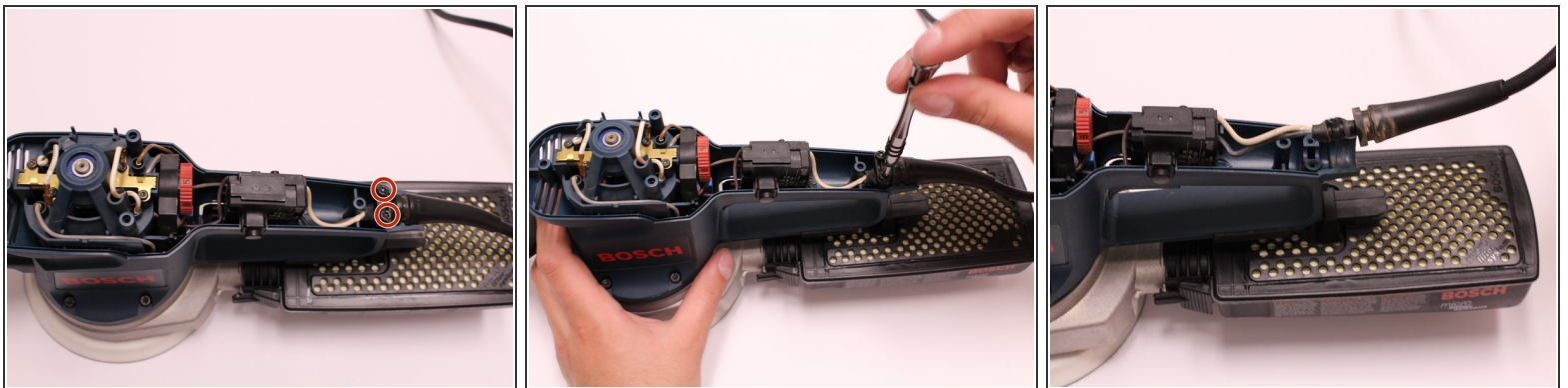
## Step 1 — On/Off Switch



⚠ Ensure that the power chord is not plugged into an outlet.

- Using the T20 Torx Screwdriver, remove the four 15.6 mm screws securing the top cover to the sander.
- Lift the top cover off the sander.

## Step 2



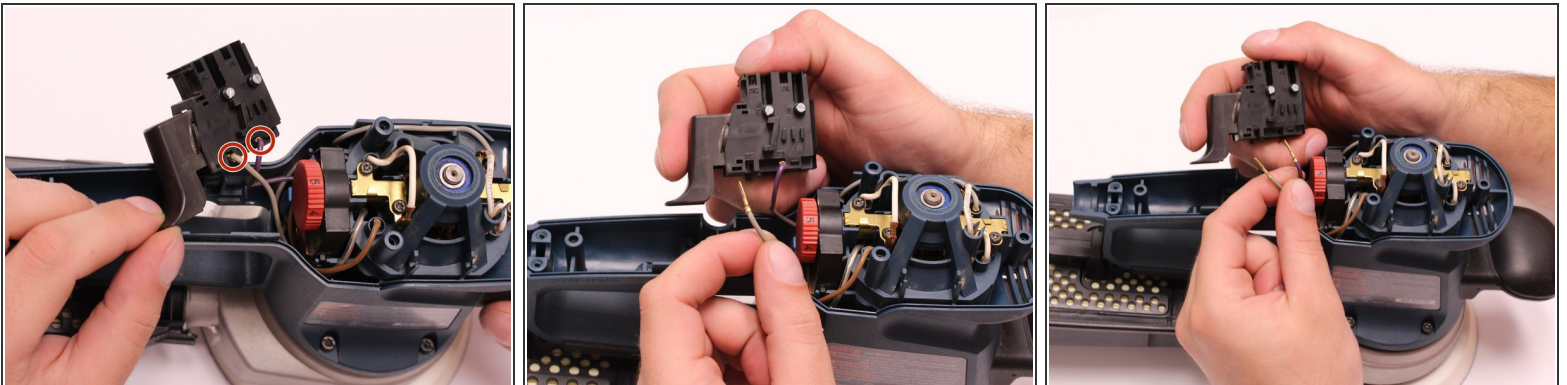
- Using the T20 Torx Screwdriver, remove the two 15.6 mm screws securing the cable clip to the motor housing.
- Lift the cable clip and cord from motor housing.

### Step 3



- Using the 2.5 mm Flathead Screwdriver, loosen the two screws securing the white and black wires to the On/Off Switch.

### Step 4



- Remove the gray and purple wires by pulling on the wire terminals.

To reassemble your device, follow these instructions in reverse order.