



# Bosch 3727DEVS Power Cord Replacement

Replacing Power Cord with a new one. The power cord must work properly in order to operate the sander.

Written By: Daniel Riddle



## INTRODUCTION

Purchase a new Power Cord. The sander should be unplugged from any power sources. Make sure you organize the removed screws, so you can reinstall them in the correct location.

---

### TOOLS:


- [T20 Torx Screwdriver](#) (1)
- [Flathead 3/32" or 2.5 mm Screwdriver](#) (1)

### PARTS:

- [Power Supply Cord](#) (1)

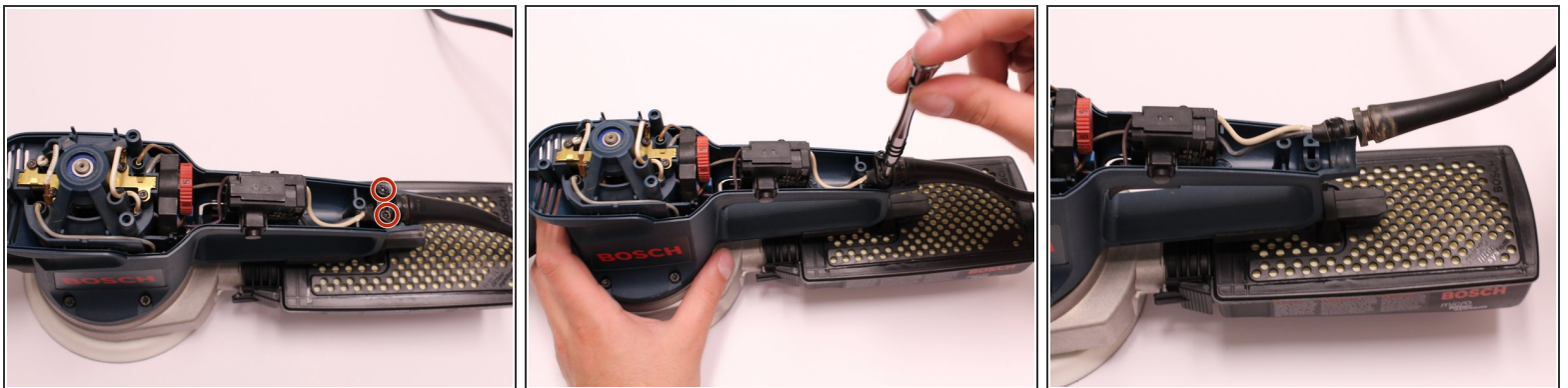
## Step 1 — Power Cord



 Ensure that the power chord is not plugged into an outlet.

- Using the T20 Torx Screwdriver, remove the four 15.6 mm screws securing the top cover to the sander.
- Lift the top cover off the sander.

## Step 2



- Using the T20 Torx Screwdriver, remove the two 15.6 mm screws securing the cable clip to the motor housing.
- Lift cable clip and cord from motor housing.

### Step 3



- Using the 2.5 mm Flathead Screwdriver, loosen the two screws securing the white and black wires to the On/Off Switch.

To reassemble your device, follow these instructions in reverse order.