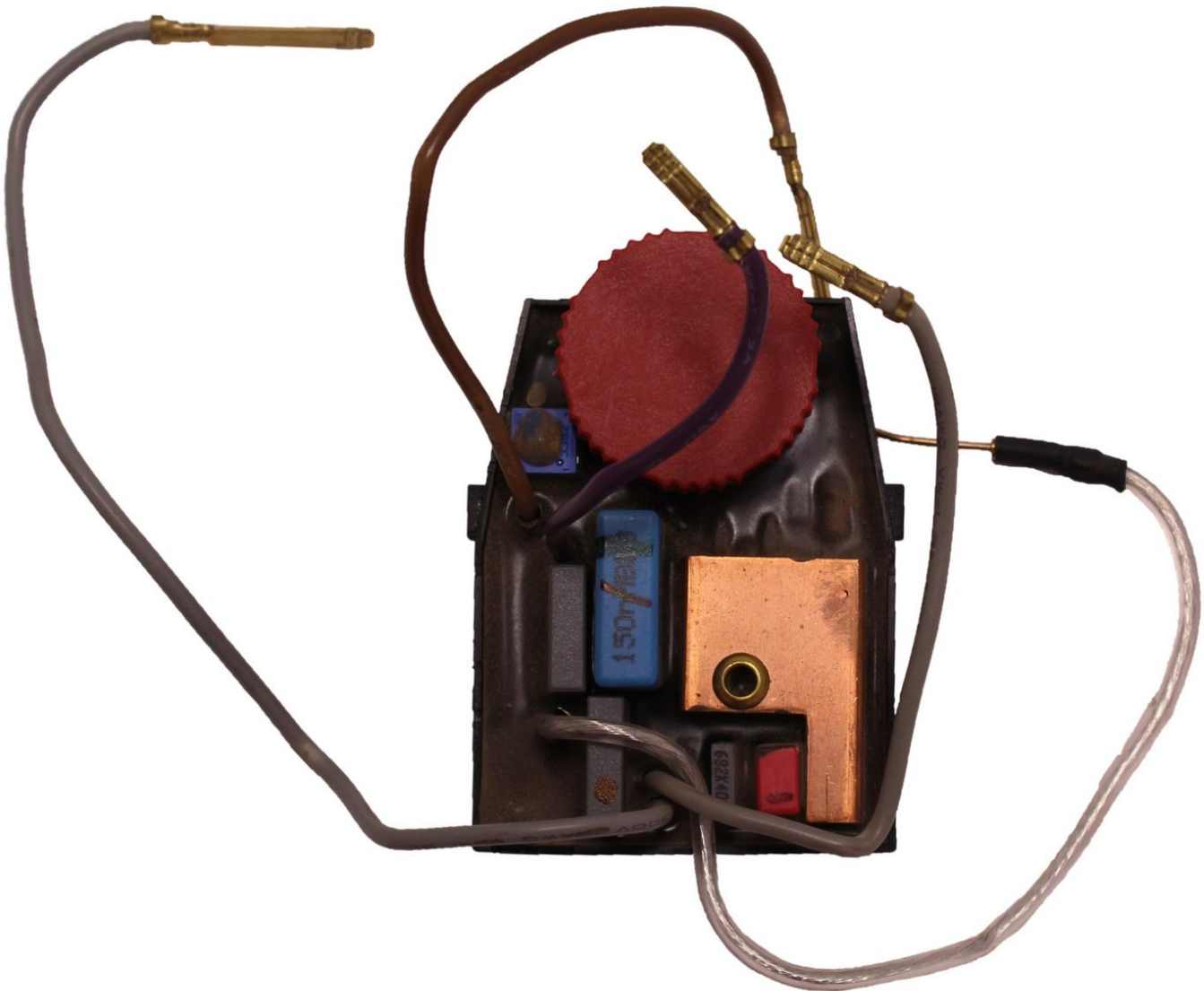




Bosch 3727DEVS Governor Replacement

Replacing the Governor with a new one. The governor controls the speed at which the sanding pad rotates.

Written By: Daniel Riddle



INTRODUCTION

Purchase a new Governor. The sander should be unplugged from any power sources. Make sure you organize the removed screws, so you can reinstall them in the correct location.



TOOLS:

- [T20 Torx Screwdriver](#) (1)




PARTS:

- [Governor](#) (1)

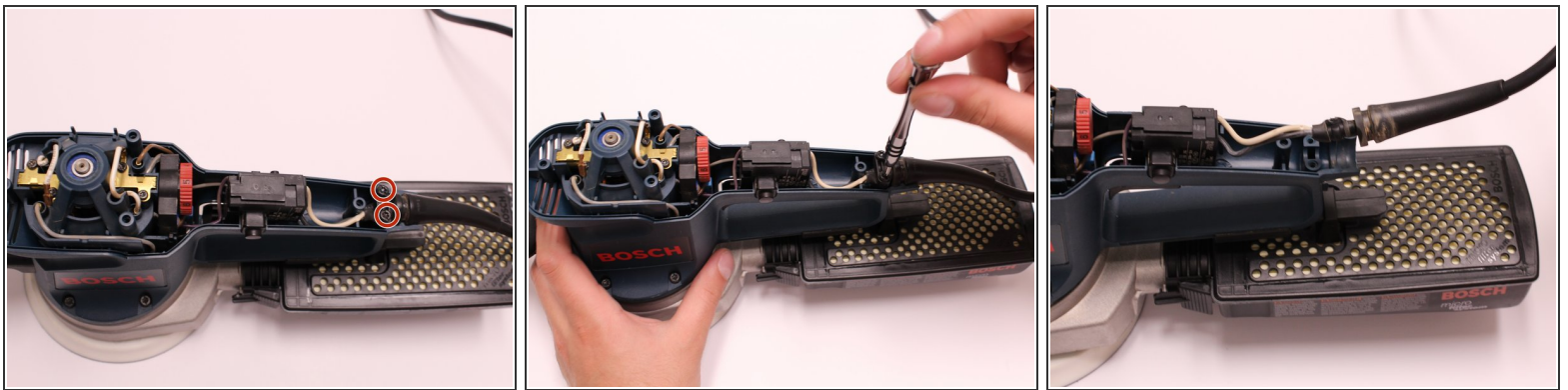
Step 1 — Governor



 Ensure that the power chord is not plugged into an outlet.

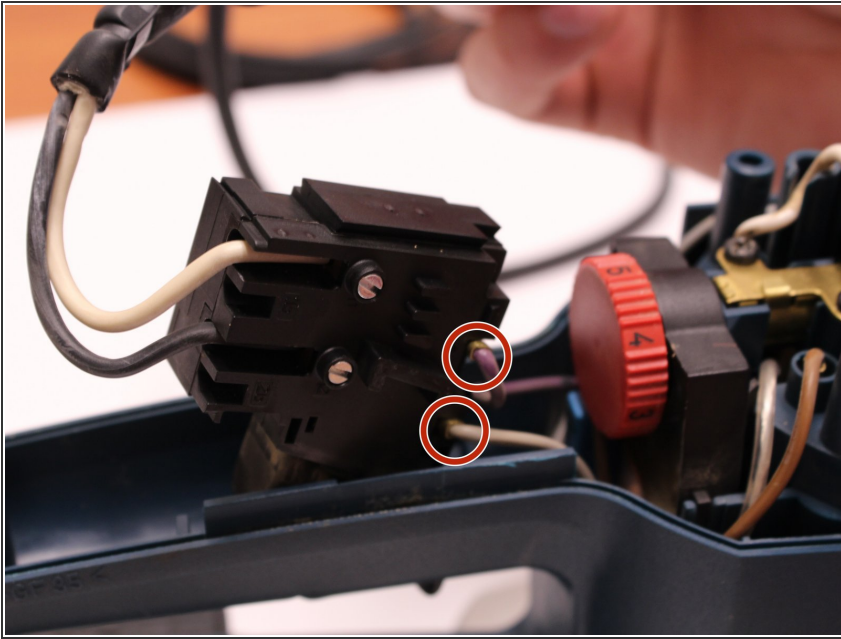
- Using the T20 Torx Screwdriver, remove the four 15.6 mm screws securing the top cover to the sander.
- Lift the top off of the sander.

Step 2



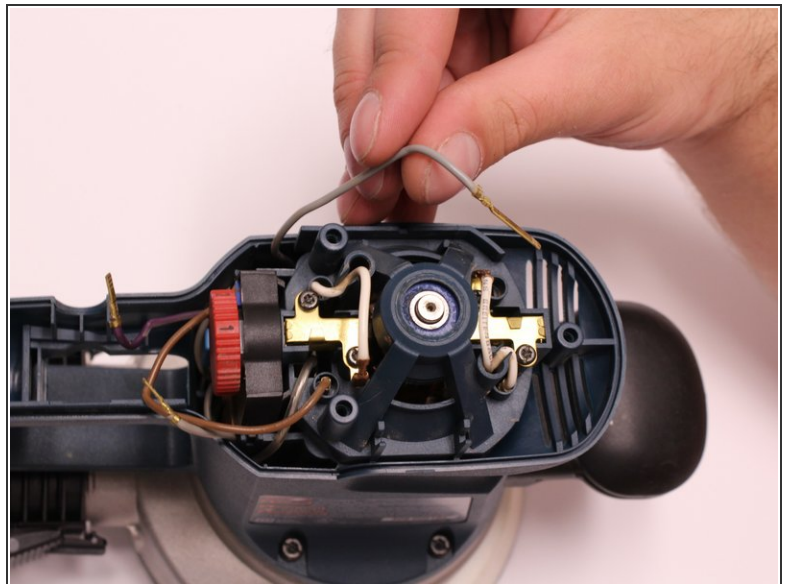
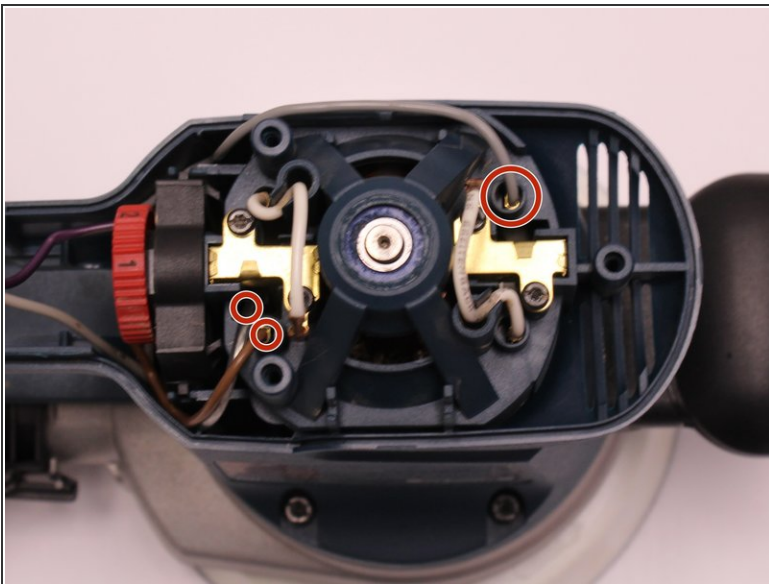
- Using the T20 Torx Screwdriver, remove the two 15.6 mm screws securing the cable clip to the motor housing.
- Lift the cable clip and cord from motor housing.

Step 3



- Lift the On/Off switch out of the device
- Remove the gray and purple wires

Step 4



- Remove the gray, brown, and clear wires by pulling on the wire terminals.
- Lift the Governor out of the housing.

To reassemble your device, follow these instructions in reverse order.