



Gateway Lt4004u Keyboard Replacement

This is a moderately difficult process. There...

Geschrieben von: Carlisle Hiott



EINLEITUNG

This is a moderately difficult process. There aren't many steps, but make sure you follow the first steps closely to insert the card correctly.

WERKZEUGE:

[Jimmy](#) (1)

[iFixit Opening Picks \(Set of 6\)](#) (1)

Schritt 1 — Battery



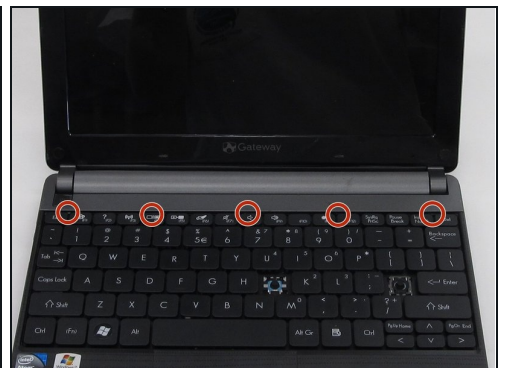
- Place the laptop face down in front of you.
- Locate the battery lock switches on the left and right top corners of the bottom of the device indicated by the red circles.
- Pinch the switches and slide toward the edges of the computer to unlock.

Schritt 2



- Once the switches have both been unlocked, push the battery upwards away from the rest of the laptop.
- Remove the battery from the laptop.

Schritt 3 — Keyboard



- Open the laptop so that the screen and keyboard are facing you.
- Identify the 5 tabs above the function keys in the crevice that attaches the keyboard to the main frame.

Schritt 4



- Use an opening pick to push each tab away from you.
- Use an opening tool to push the middle tab until you hear a click. Begin to push the tool downward into the computer and slide the card along the length of the keyboard, as you overcome the five tabs.

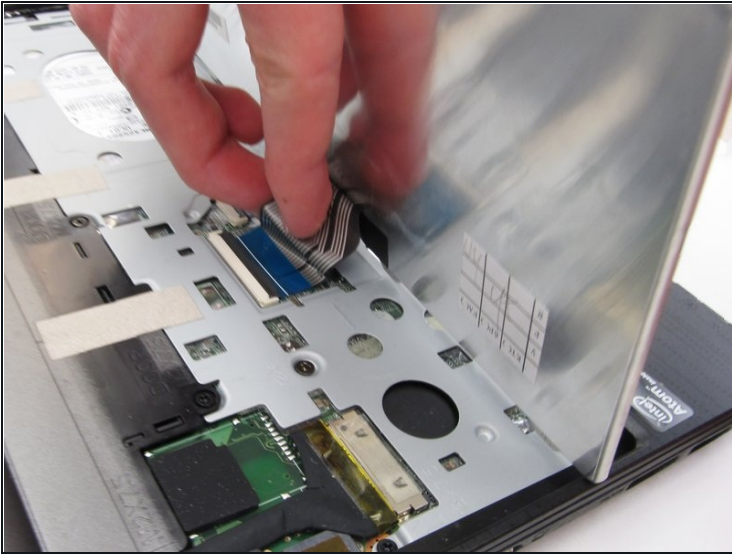
⚠ A clicking sound is normal and no cause for alarm.

Schritt 5



- Begin to slide the [plastic card](#) under the top edge of the keyboard. You will hear popping sounds and the keyboard will eventually be released.
 - Carefully pry the keyboard from the main frame, starting at the top section.
- ⓘ Look at the intel sticker in this step and the next to orient your computer with the pictures.

Schritt 6



- ① Look at the intel sticker in this step and the previous step to orient your computer with the pictures.
- Unplug the thin blue connection piece beneath the keyboard. It may pop off on its own while you are prying off the keyboard.
 - ⚠ The popping noise will not hurt the computer.
- Once the thin blue plastic has been detached, remove the keyboard from the rest of the laptop.

To reassemble your device, follow these instructions in reverse order.