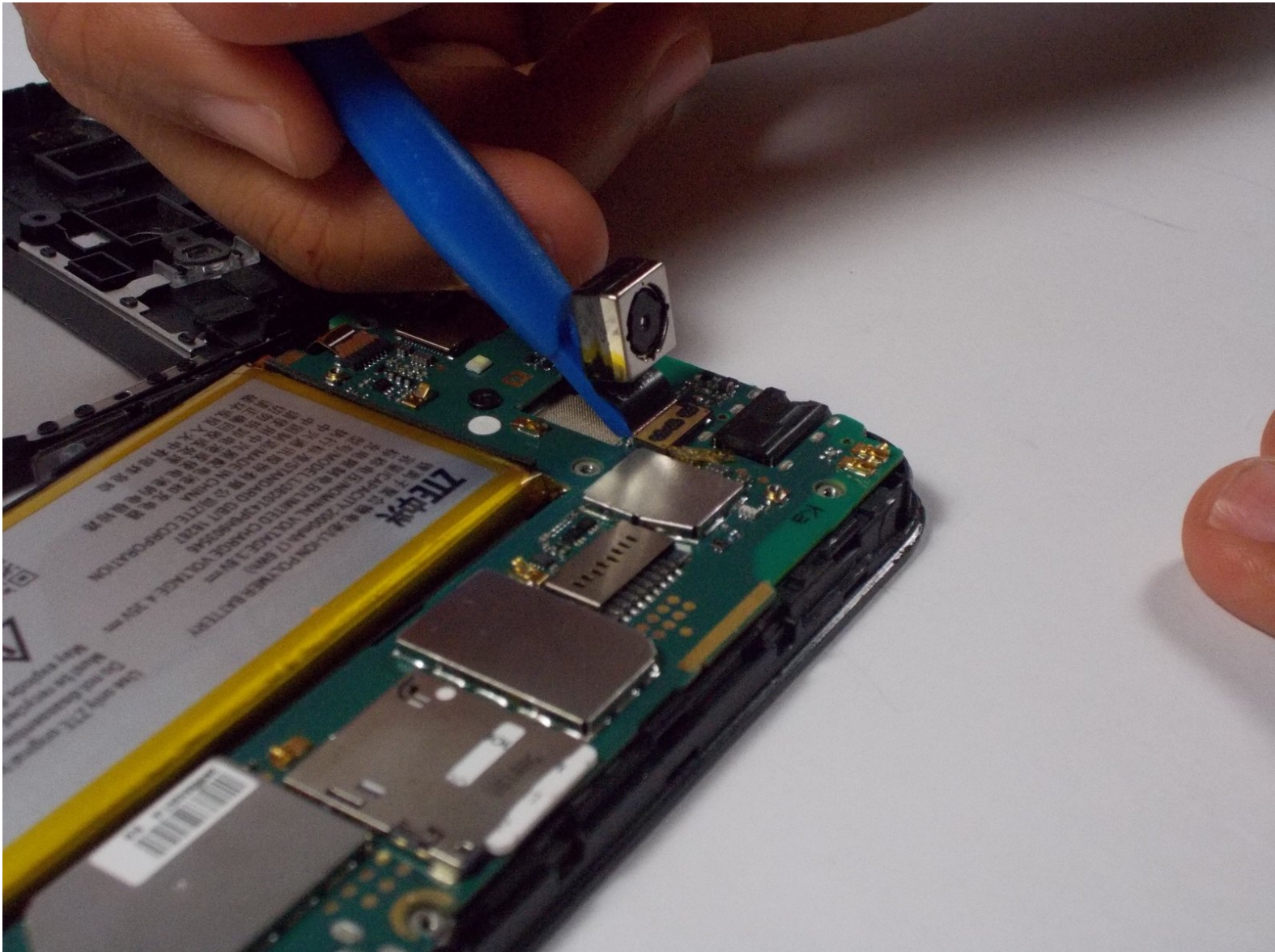




ZTE Speed Front and Back Camera Replacement

Allow you to access the front and back camera of the ZTE Speed

Written By: Garrett Barry



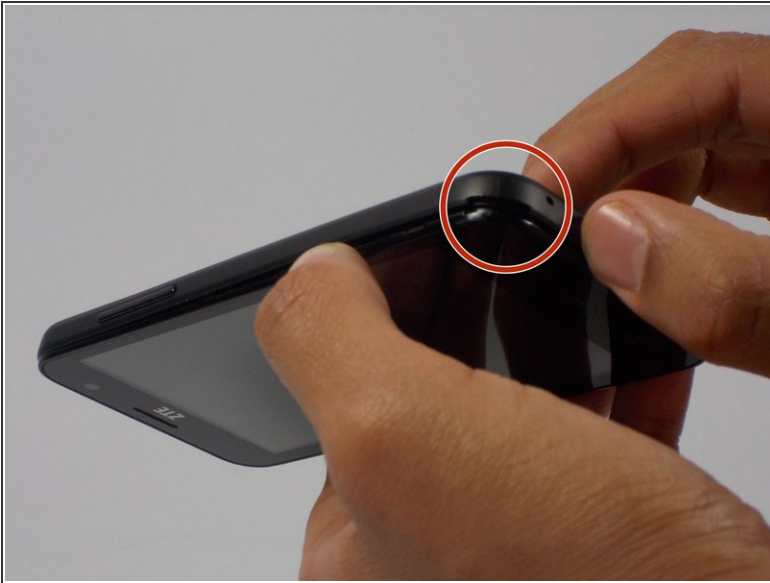
INTRODUCTION

Removing the cameras of the ZTE Speed is a very simple process, proceed below!

TOOLS:

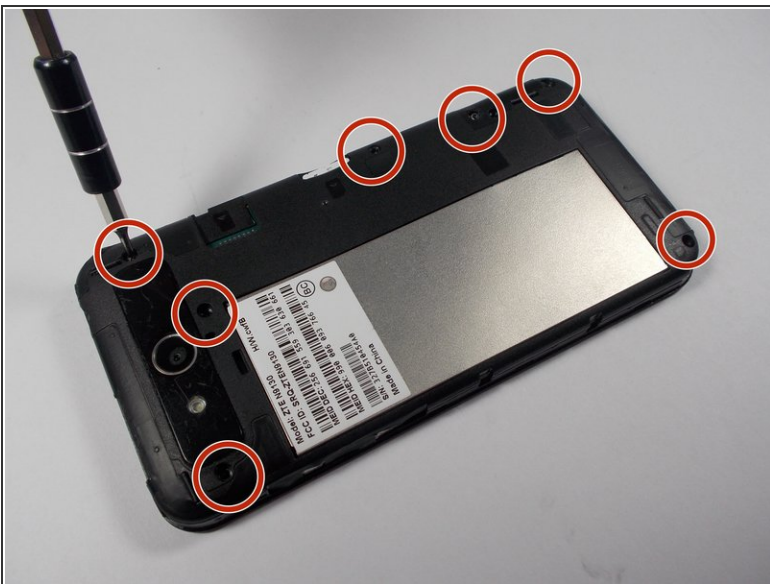
- [iFixit Opening Tools](#) (1)
 - [Phillips #000 Screwdriver](#) (1)
-

Step 1 — Front and Back Camera



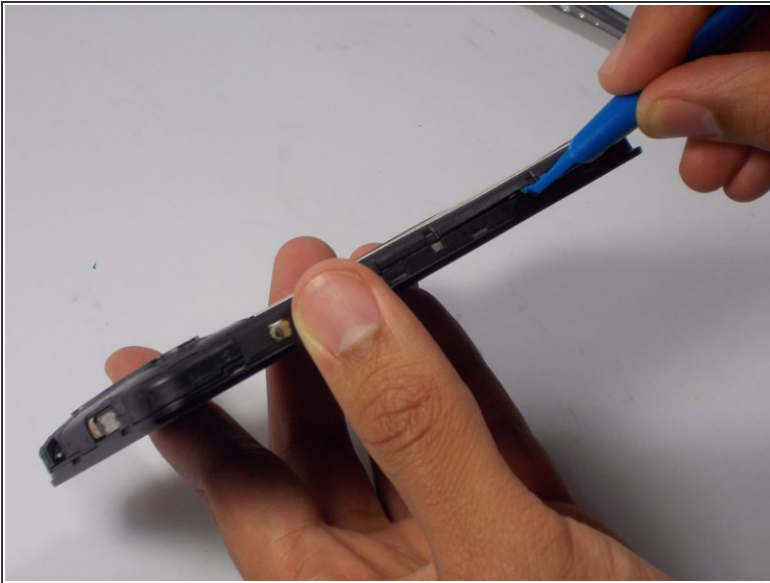
- Pull off back cover at bottom right corner.

Step 2



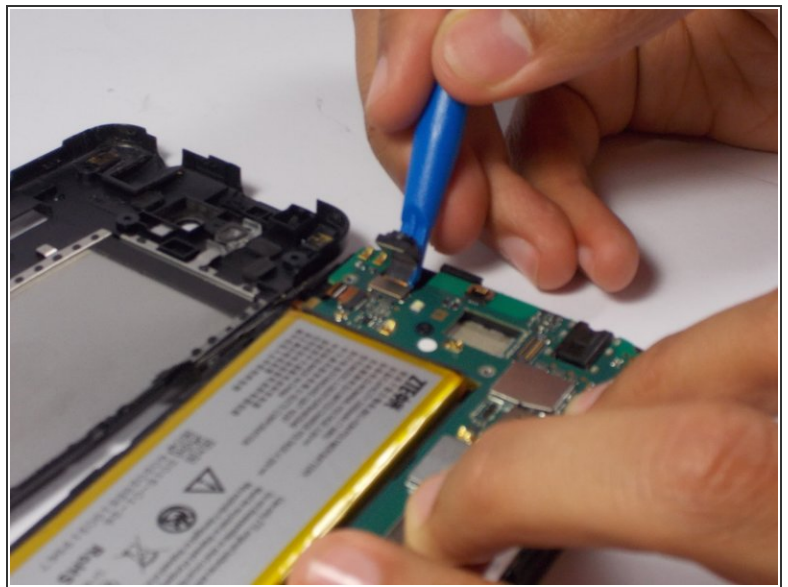
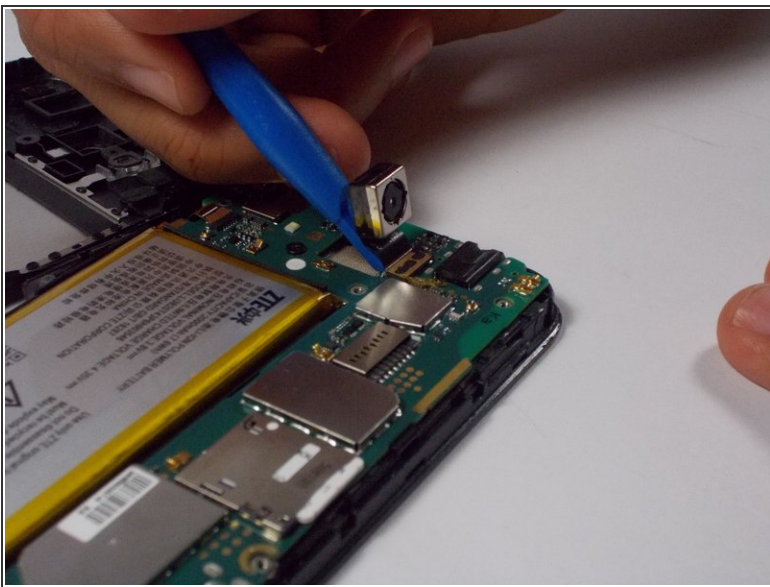
- Remove the seven 3.175mm Phillips head screws from the inner back located at the top, upper-middle-right, middle-right, lower-right, and bottom.

Step 3



- With the plastic opening tool the spudger, gently pry off the inner back seal around the phone.
- Be careful not to pry it off too harsh, as it is just plastic.

Step 4



- With the spudger, gently pry off camera at the top-middle of the phone to get back camera.
- With the spudger, gently pry off camera at the top-left of the phone to get the front camera.

To reassemble your device, follow these instructions in reverse order.