



iPad 2 GSM LCD Replacement

Removing LCD assembly with front panel attached. Internal Prerequisite.

Written By: Walter Galan



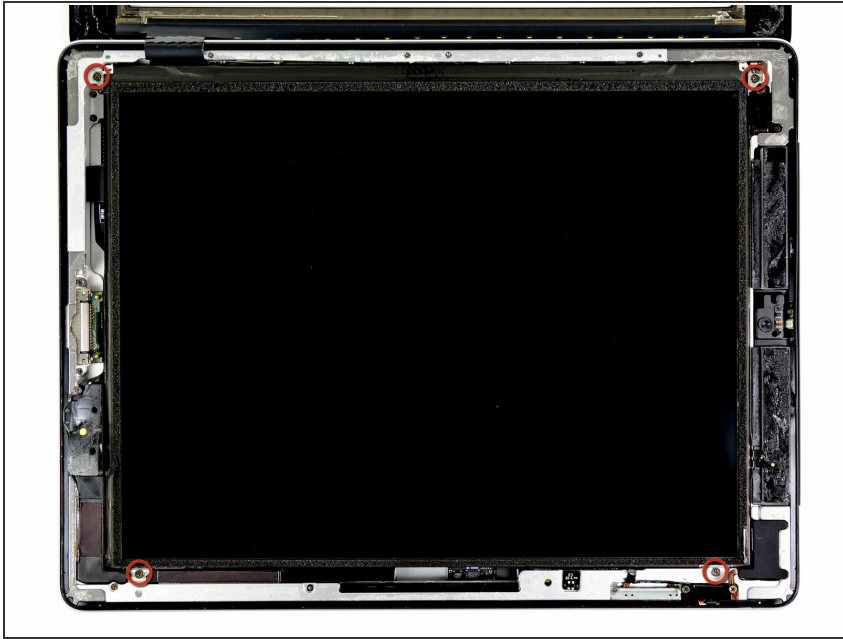
INTRODUCTION

Removing LCD assembly with front panel attached. Internal Prerequisite.

TOOLS:

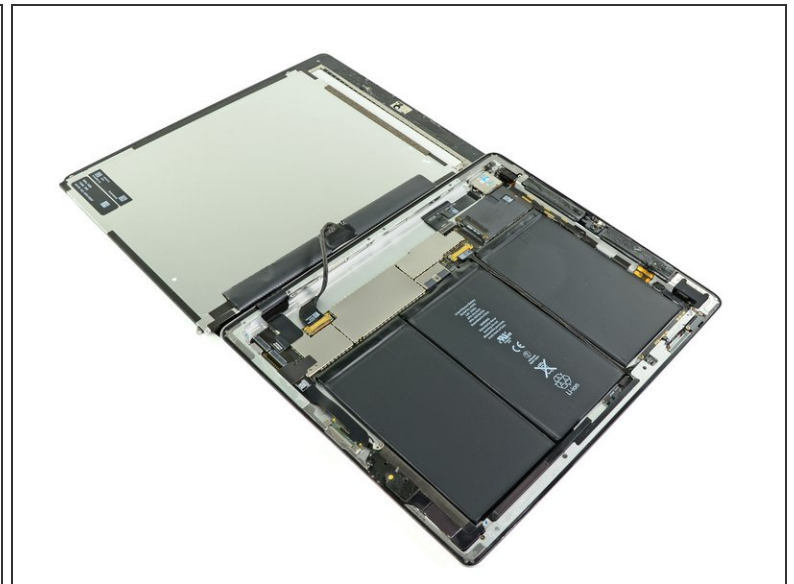
- [Phillips #00 Screwdriver](#) (1)
 - [iFixit Opening Tools](#) (1)
-

Step 1 — LCD



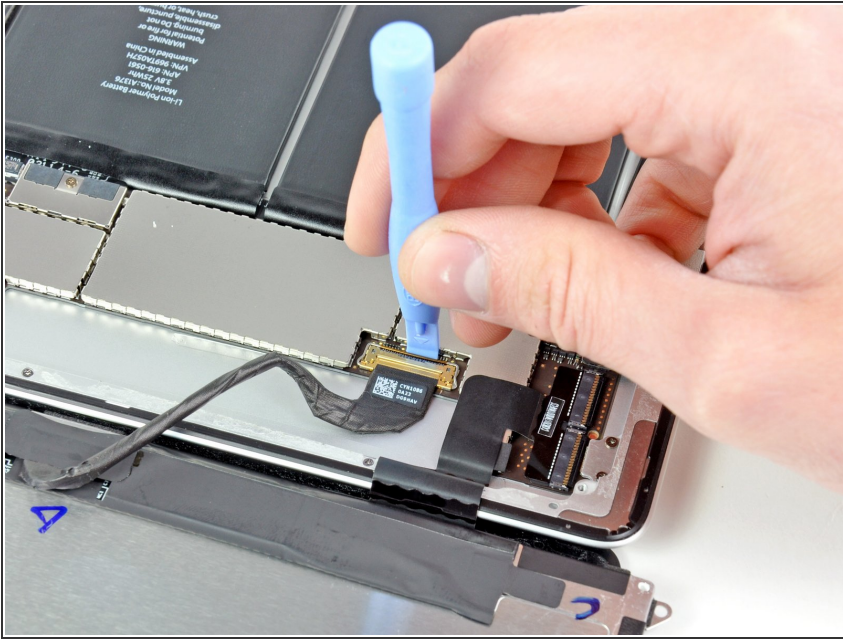
- Remove the four 2.0 mm Phillips screws securing the LCD to the rear case.

Step 2



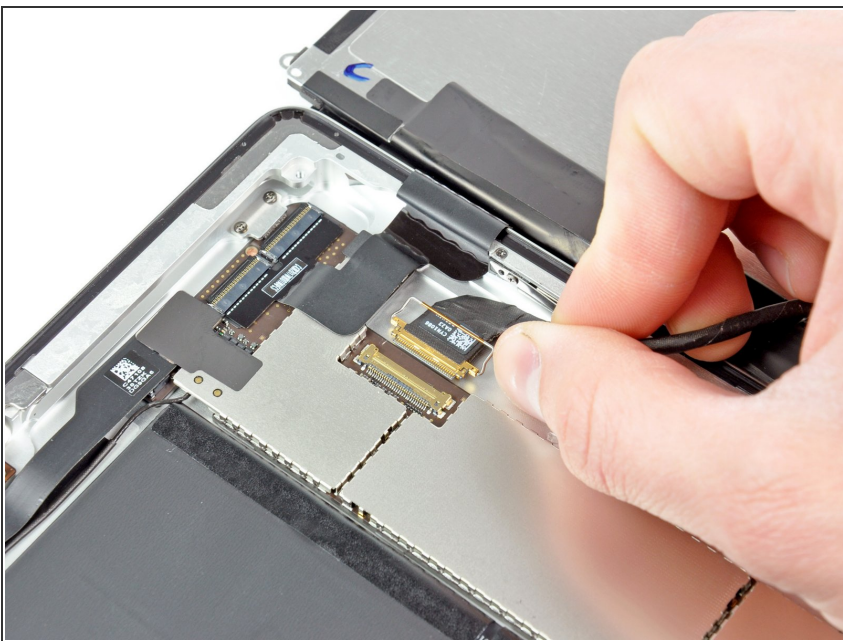
- Lift the LCD from its long edge closest to the volume buttons and rotate it out of the rear case.
- Lay the LCD on the front panel as seen in the second picture.

Step 3



- Use the edge of a plastic opening tool to flip up the metal retaining clip securing the display data cable to its socket on the logic board.

Step 4



- Pull the display data cable out of its socket on the logic board.
- ⚠ Do not lift upward on the display data cable connector as you disconnect it.

Step 5



- Remove the LCD assembly from the iPad 2.

To reassemble your device, follow these instructions in reverse order.