



iPad 2 GSM LCD Replacement

Moving LCD out of the way to remove random internal components. Internal Prerequisite.

Written By: Walter Galan



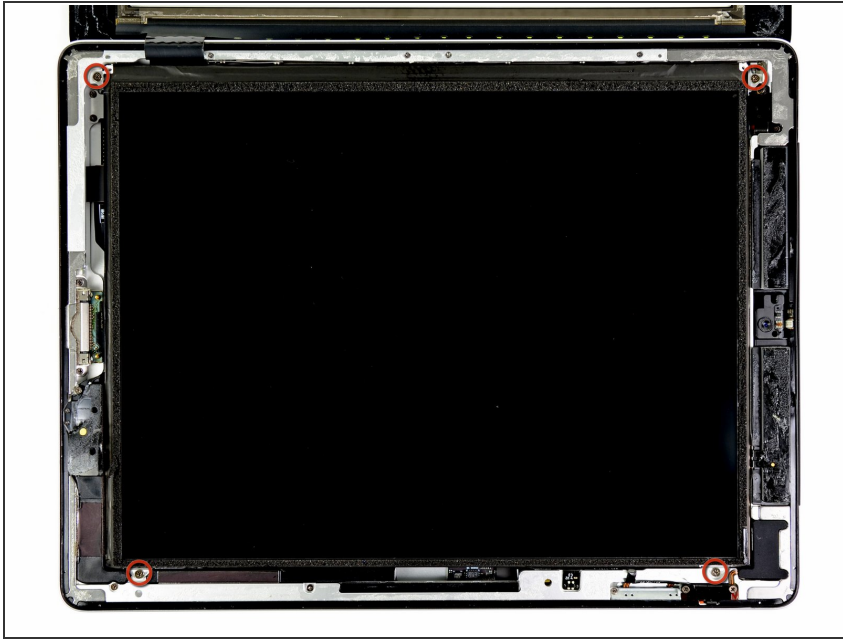
INTRODUCTION

Moving LCD out of the way to remove random internal components. Internal Prerequisite.

TOOLS:

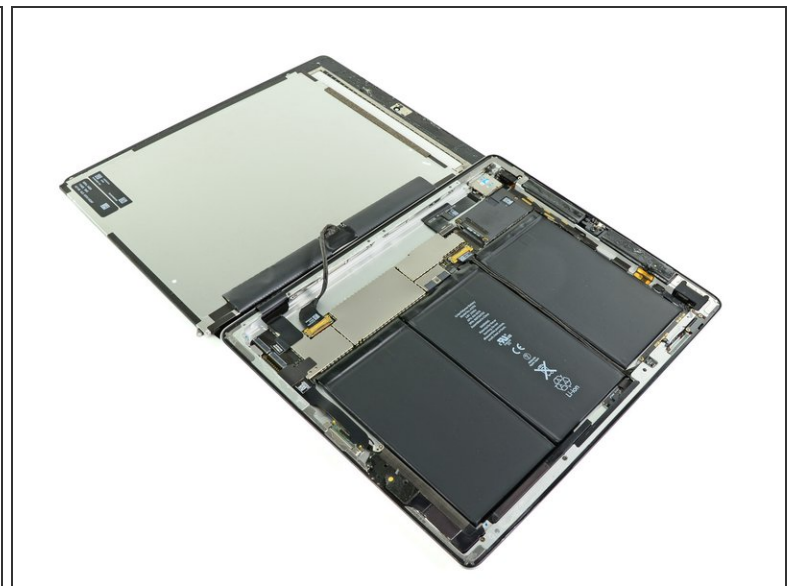
- [Phillips #00 Screwdriver](#) (1)
-

Step 1 — LCD



- Remove the four 2.0 mm Phillips screws securing the LCD to the rear case.

Step 2



- Lift the LCD from its long edge closest to the volume buttons and rotate it out of the rear case.
- Lay the LCD on the front panel as seen in the second picture.

To reassemble your device, follow these instructions in reverse order.