



# Magic Trackpad Click Adjustment

If your Magic Trackpad will no longer click, this simple yet effective repair will fix the problem in under 5 minutes.

Written By: jkgarrett17



---

## INTRODUCTION

While some people like the tap-to-click feature of the Magic Trackpad, other users, such as myself, prefer a click that we can feel. After months of use, sometimes the trackpad will get stuck and will no longer click in on one side or the other. This repair guide will have your Magic Trackpad clicking again in under 5 minutes.

---

### TOOLS:

- [iFixit Opening Tools](#) (1)

*A small flat head screwdriver may substitute, but this may chip your metal or plastic.*

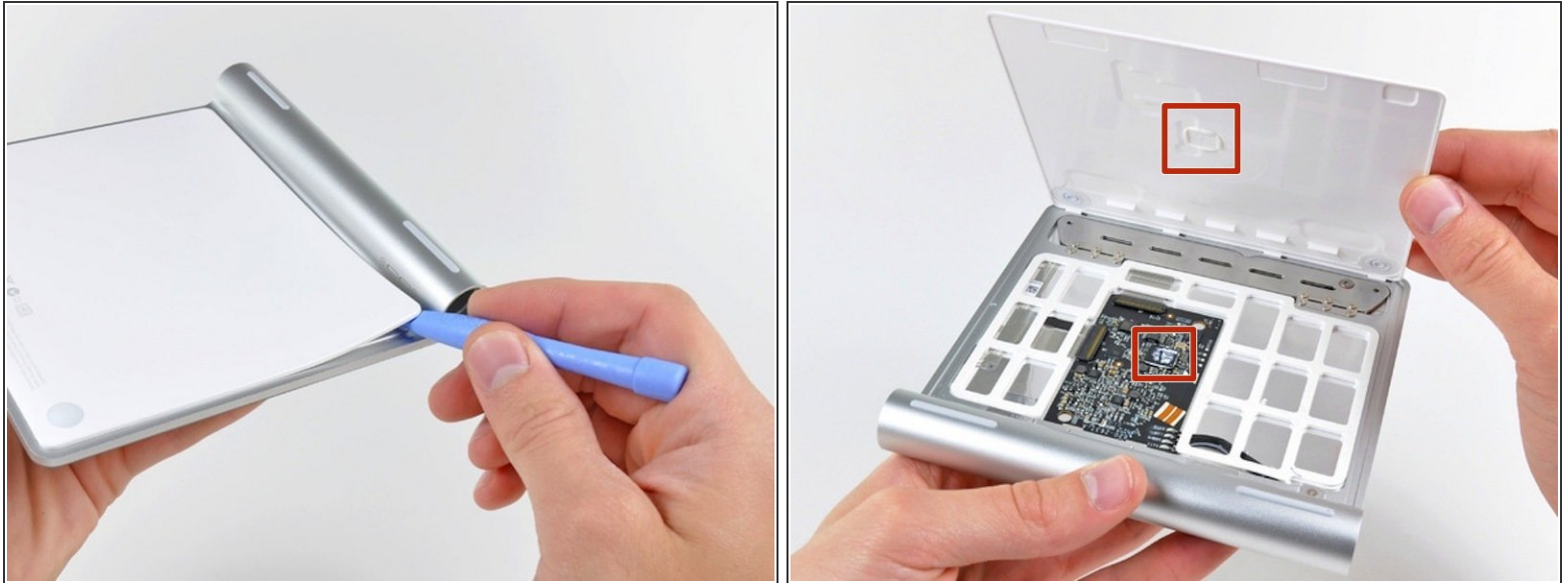
- [T6 Torx Screwdriver](#) (1)
-

## Step 1 — Magic Trackpad Click Adjustment



- Get your Magic Trackpad out and prepare to fix it.
- Unscrew the battery door by turning the screw counter-clockwise with a flat edge screwdriver, coin, plastic opening tool, or fingernail.
- Remove the batteries to prevent any short-circuiting while fixing your Magic Trackpad.

## Step 2



- Use a plastic opening tool to separate the adhesive securing the back panel's left, right, and top edges.
  - ⚠ **Do not** pry along the bottom (the edge opposite the battery compartment). There are a bunch of retaining clips that may break if you start from the bottom.
  - ⚠ Be extremely careful in lifting off the lower panel. The primary CPU/chip on the circuit board (marked in red in the second photo) is affixed to the back panel with a blob of glue. Failure to carefully slice through the glue from the chip/panel can result in the chip being torn from the circuit board, which **WILL** destroy your trackpad.
- After slicing through all the adhesive, the lower panel lifts right off.

### Step 3



- Use a T-6 or T-7 Torx bit to adjust the tightness of the little screw highlighted in red in the bottom-left corner of the device (top-down).
- If the right click works but the left click doesn't, you'll need to turn the screw clockwise.
- Note: right and left clicks are determined by the Trackpad top, not the view from the bottom as you are adjust the screw.
- If neither the right click nor left click work, turn it counter-clockwise if there is no movement at all, and clockwise if there is movement but it is too soft to click.

### Step 4



- Reverse the steps to put the plastic back on the bottom of the Magic Trackpad.
- Your Magic Trackpad should be as good and new and ready to use!

To reassemble your device, follow these instructions in reverse order.

This document was last generated on 2019-07-12 10:11:41 AM.