



iPad 2 GSM SIM Card Replacement

Remove the SIM card from your iPad 2 GSM.

Written By: Walter Galan



INTRODUCTION

Use this guide to remove your SIM card.



TOOLS:

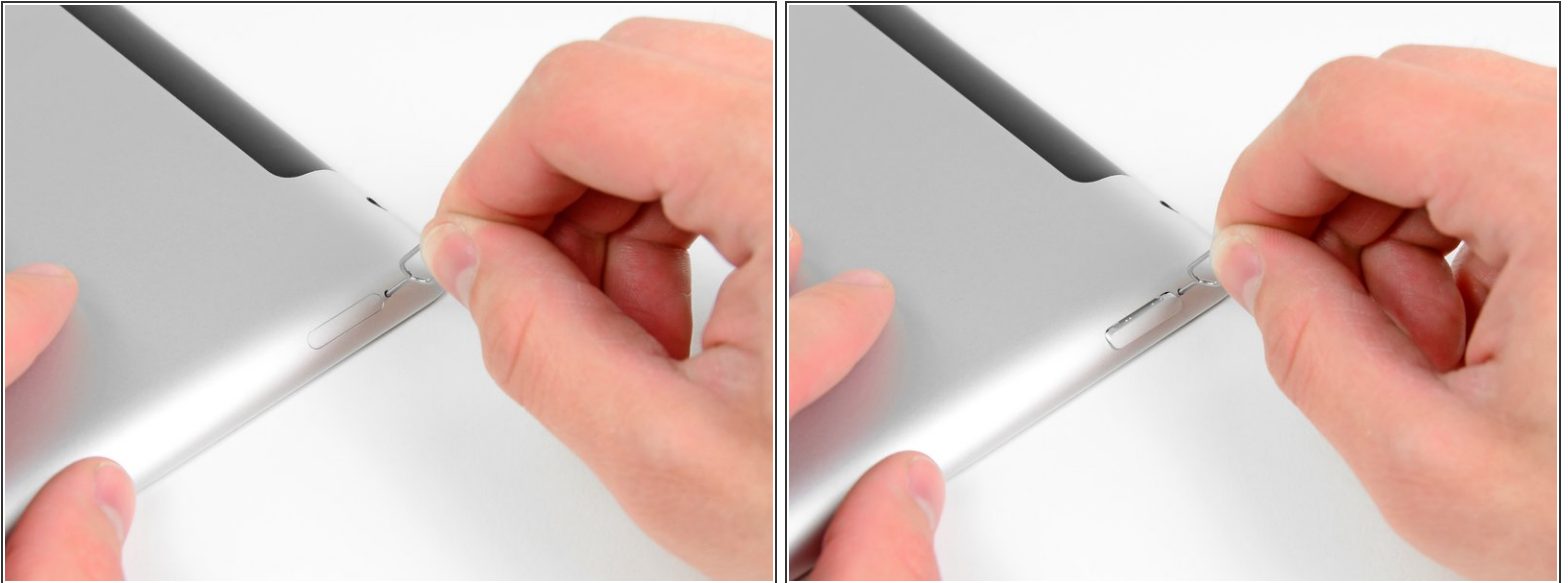
- [SIM Card Eject Tool](#) (1)



PARTS:

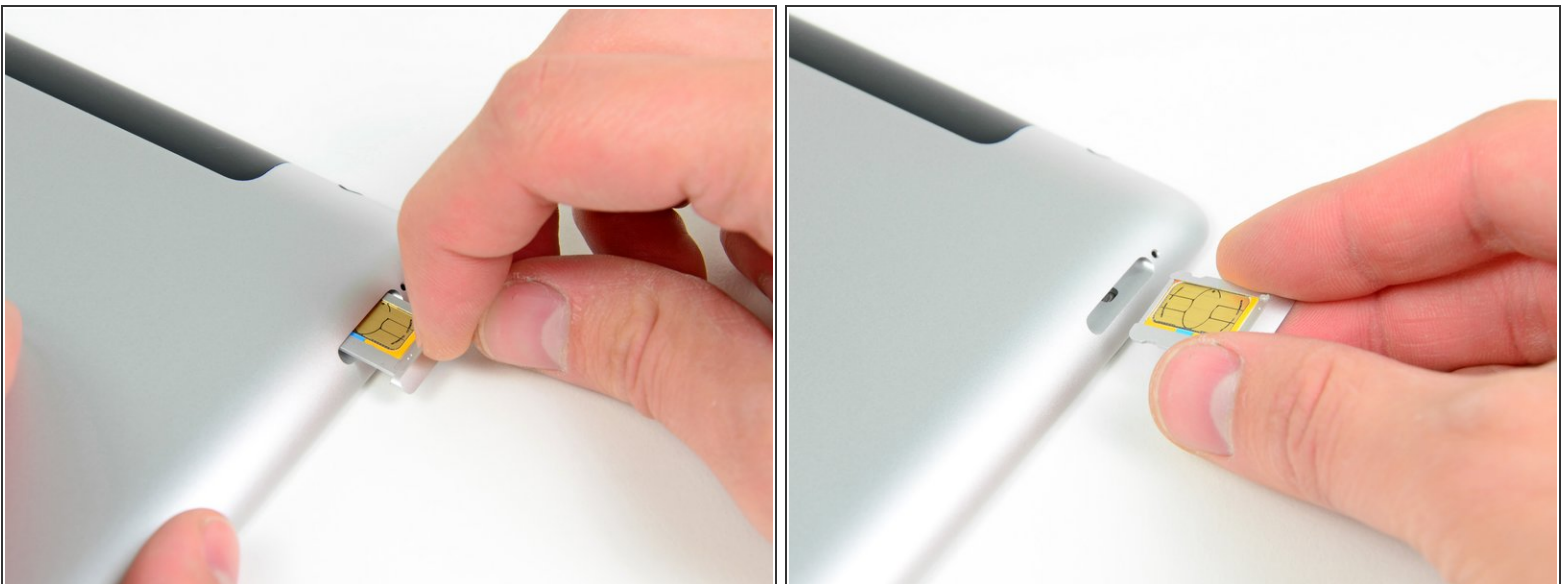
- [iPad 2 SIM Card Tray](#) (1)

Step 1 — SIM Card



- Use a SIM eject tool or an uncoiled paperclip to eject the SIM card tray.

Step 2



- Pull the SIM tray out of its slot and remove it from the iPad 2.
- ☑ If replacing the SIM card, pop it out of its tray and install the new one.

To reassemble your device, follow these instructions in reverse order.