



Samsung Galaxy Star Pro Micro SD Memory Card Replacement

How to replace the memory card in the phone. The memory card is where you save all your media on your device. Sometimes it fills up quickly or it becomes corrupted and needs replacement.

Written By: Lance Barber



INTRODUCTION

How to Replace the Memory card. Without the Memory card the user could not keep any media on the phone. Memory cards can become corrupted from virus or bugs or sometimes they are filled up to the max with media and a larger one needs to be put in place. This guide shows you had to replace it if needed in a few easy steps.



TOOLS:

- [iFixit Opening Tools](#) (1)
-

Step 1 — Battery Replacement



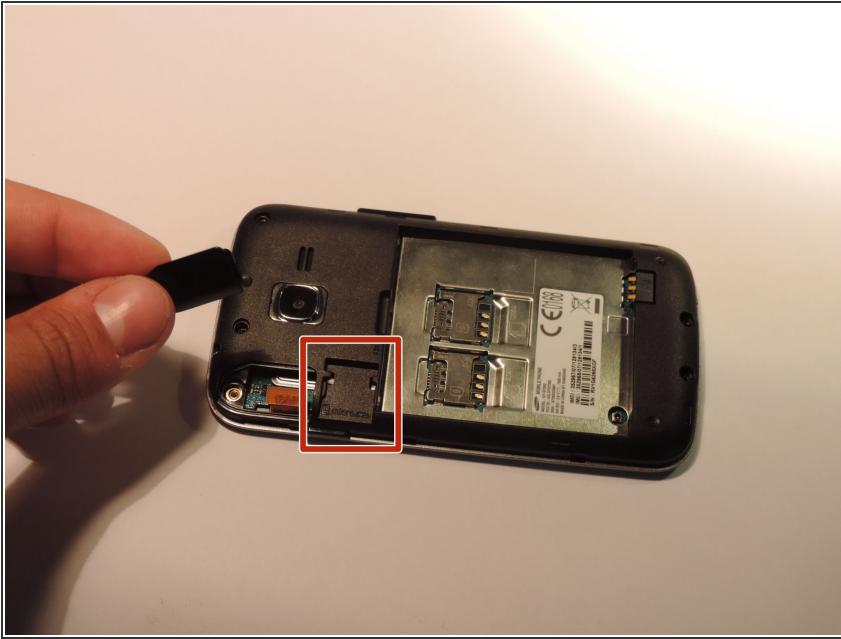
- Place phone firmly between both hands with one hand flat on the back of the phone and pop off the back cover

Step 2



- Once rear cover is off use small pastic spudger to lift battery out of the phone

Step 3 — Micro SD Memory Card



- After following the steps for battery replacement, the SD memory card is going to be able slide right out of this slot for replacement.

To reassemble your device, follow these instructions in reverse order.