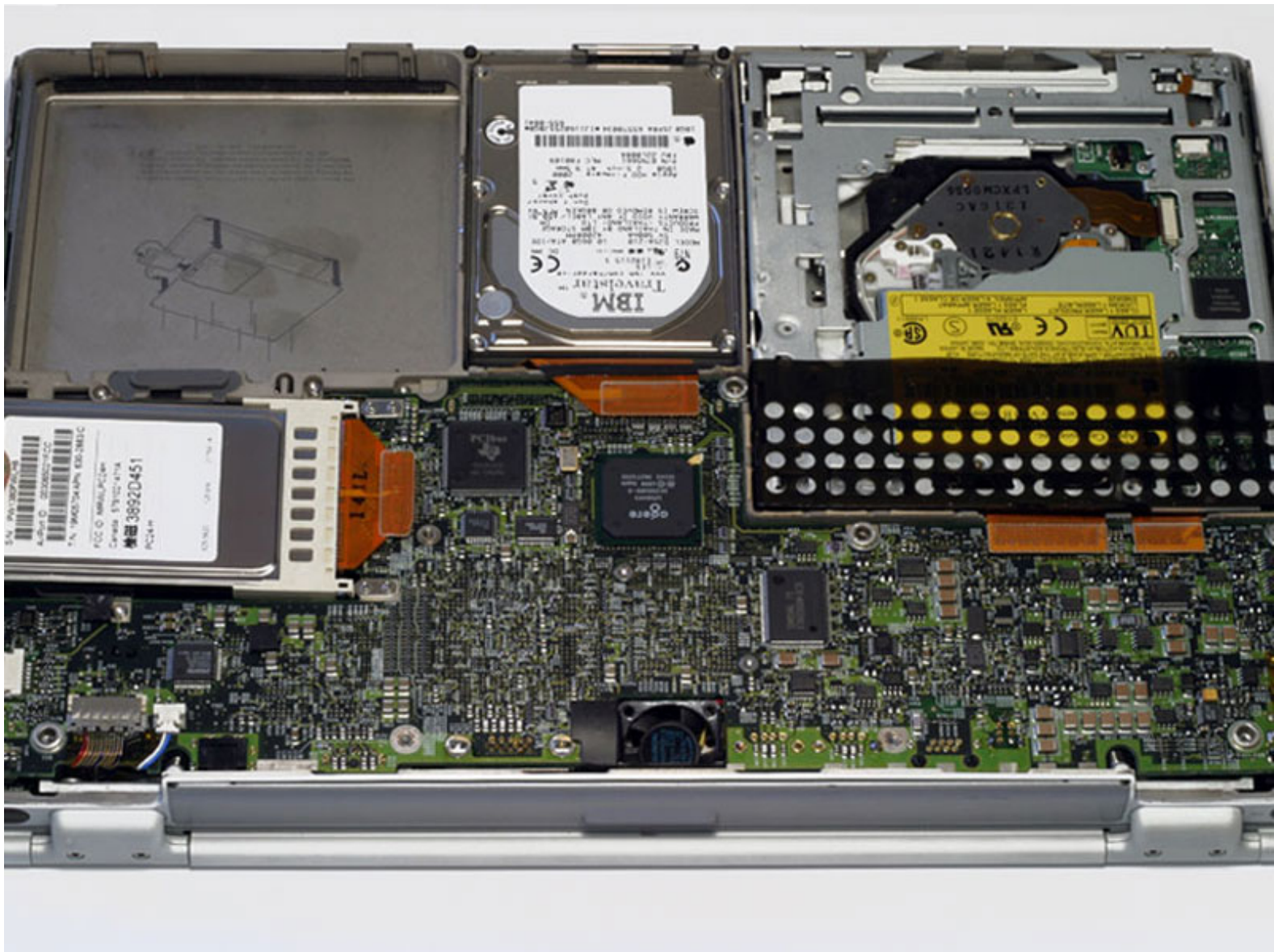




# PowerBook G4 Titanium Mercury Airport Card Replacement

Written By: iRobot



## INTRODUCTION

Install an original Airport 802.11b card internally.

---



### TOOLS:

- [Phillips #0 Screwdriver](#) (1)



### PARTS:

- [Airport Card](#) (1)
-

## Step 1 — Lower Case



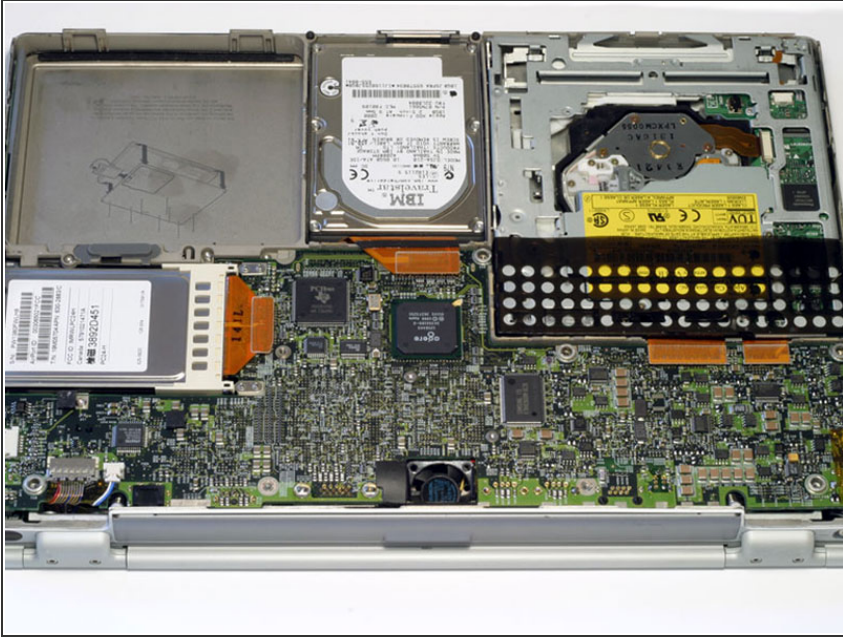
- Turn the G4 over.
- Remove the eight Phillips screws from the lower case.

## Step 2



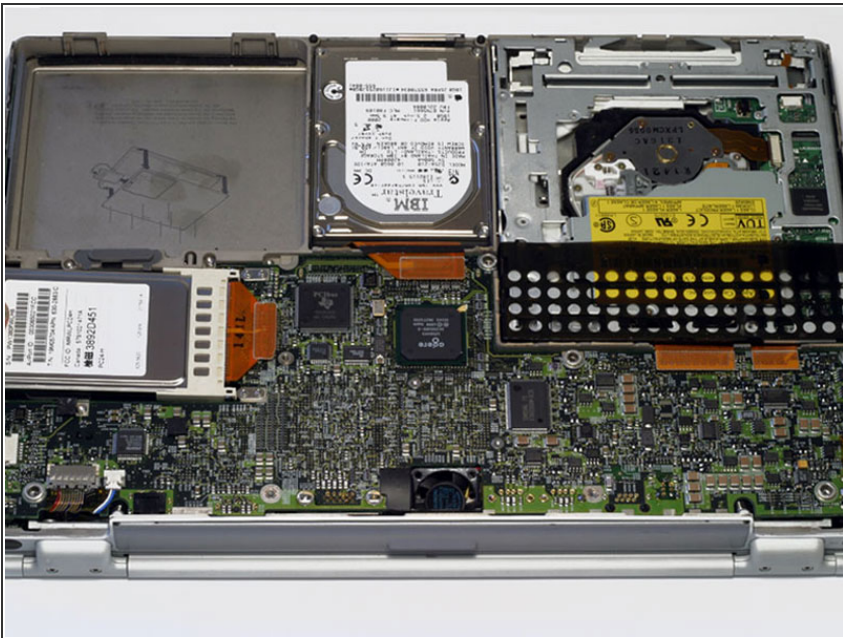
- Using your thumbs, slide the lower case away from you.
- ⓘ The lower case may stick in the front on a tab just above the center of the DVD drive. Be careful as you work the case off, or you may break the thin strip of plastic just above the drive.
- Lift the lower case off.

### Step 3



- Your laptop should look approximately like this.

### Step 4 — Airport Card



- ⓘ Skip this step if your computer does not have an Airport card.
- Firmly grasp the plastic tab attached to the Airport card and pull up and to the left.
- Disconnect the antenna cable from the left side of the Airport card.

To reassemble your device, follow these instructions in reverse order.