



Dremel 8220 Power Switch Replacement

Replace a faulty or broken power switch in your Dremel 8220.

Written By: Shailing Santiago



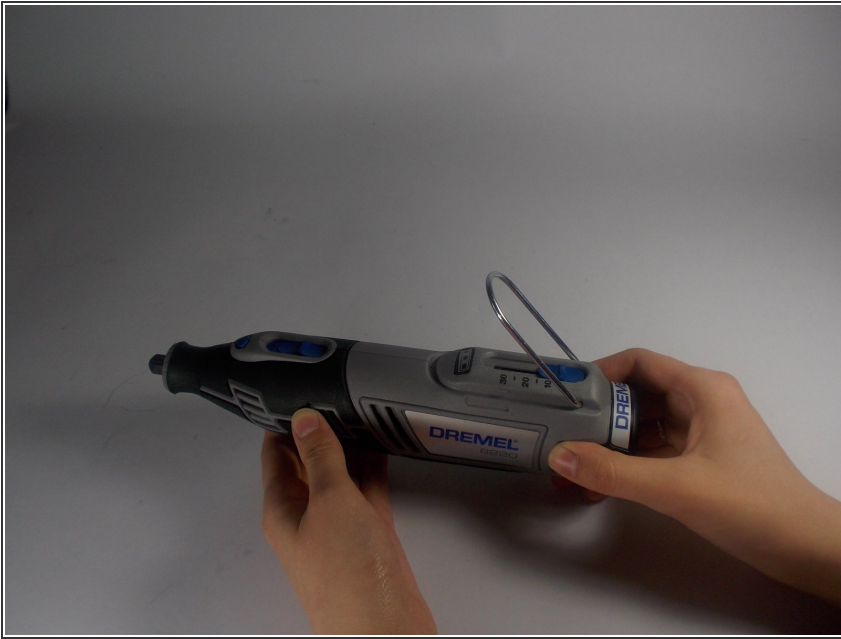
INTRODUCTION

This guide will show you how to open up your device. You will then have access to all the internal components. The power switch can then be replaced with minimal effort

TOOLS:

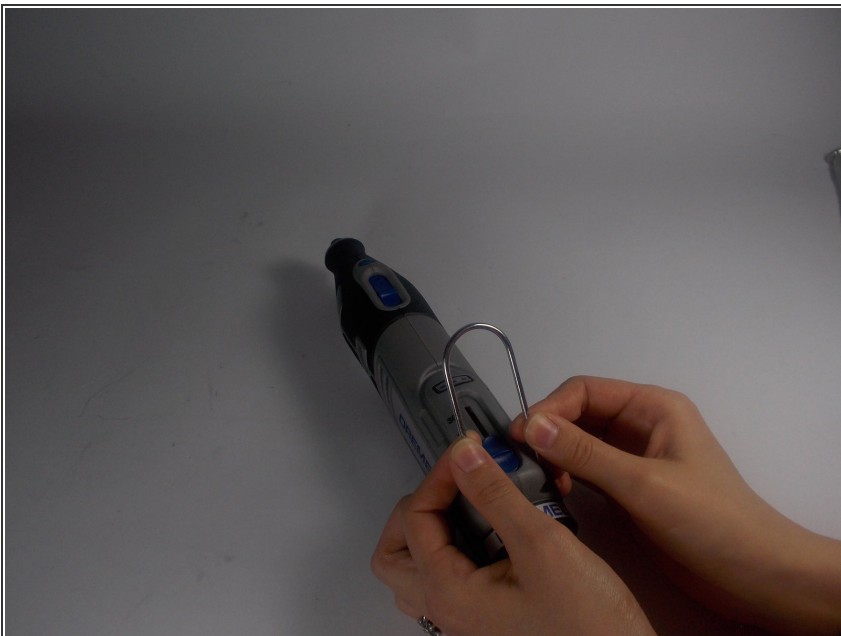
- [T9 Torx Screwdriver](#) (1)
-

Step 1 — Power Switch



- Locate the battery at the back of your Dremel. Firmly grasp the battery on both sides and pull. It should easily come out of the battery well.

Step 2



- Remove the ring located around the speed selector switch by pulling apart on either side. This should require very minimal force.

Step 3



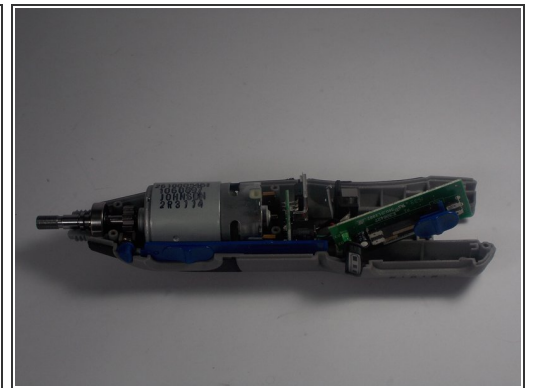
- Remove the collar wrench by pushing the gear lock button. Continue to hold this button as you rotate the wrench counter-clockwise until it is removed.

Step 4



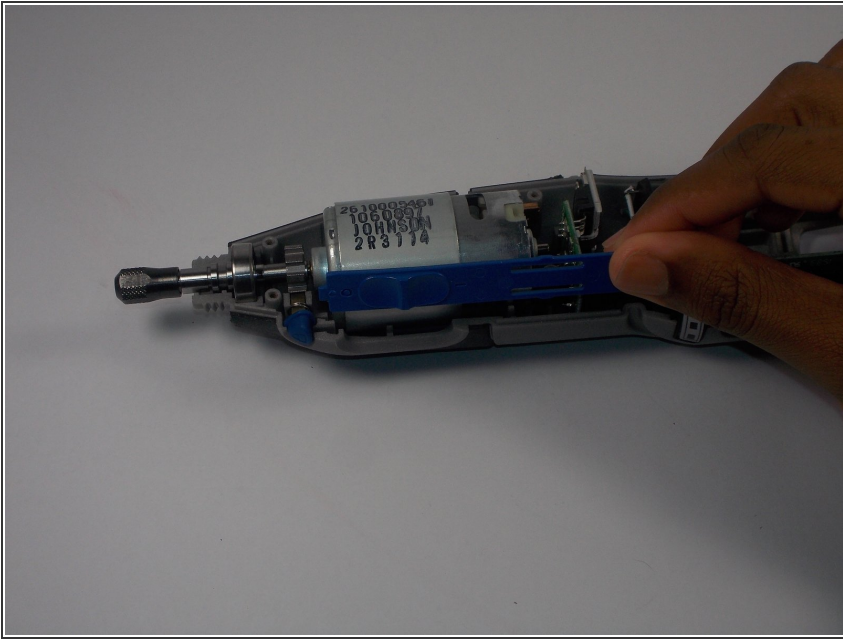
- Remove the metal clasp from the battery well. This piece helps hold the plastic shell of the device together. Pry it out by gently applying some force with a screwdriver.

Step 5



- Remove five T9 Torx screws from the side of the tool.
- ⓘ Now pull apart the plastic shell of the device. If you are not able to, review the previous steps as you may have missed one.

Step 6



- Remove the faulty power switch. It should come out of the device without using any force.

To reassemble your device, follow these instructions in reverse order.