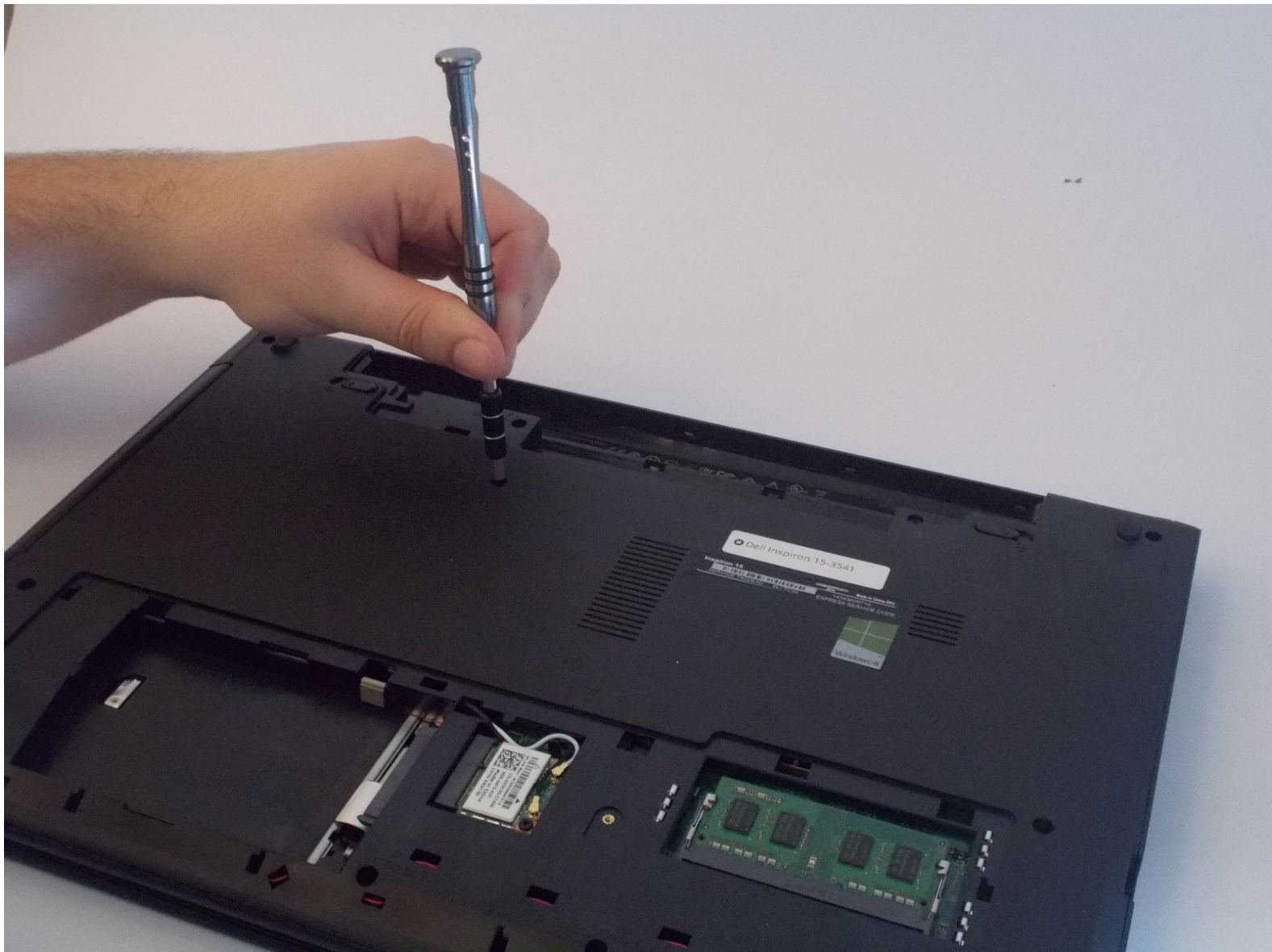




# Dell Inspiron 15 Optical Drive Replacement

You will be able to remove and replace the optical drive if you follow this guide.

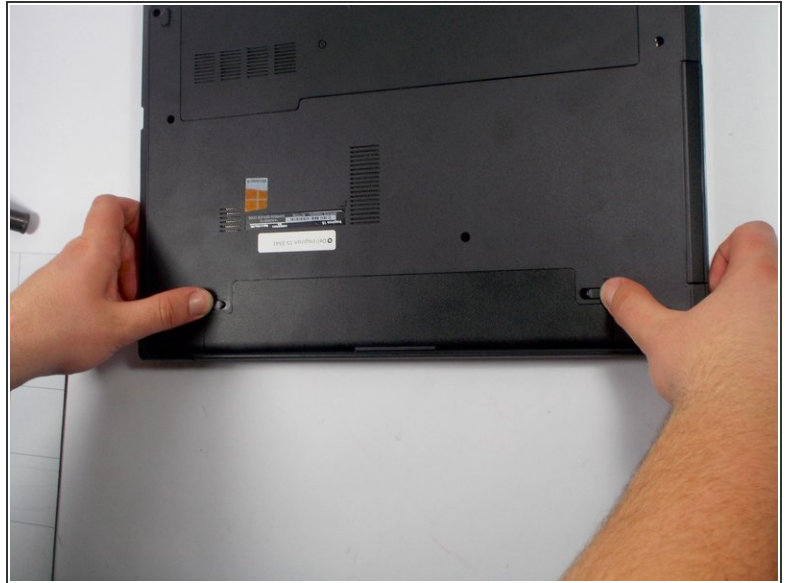
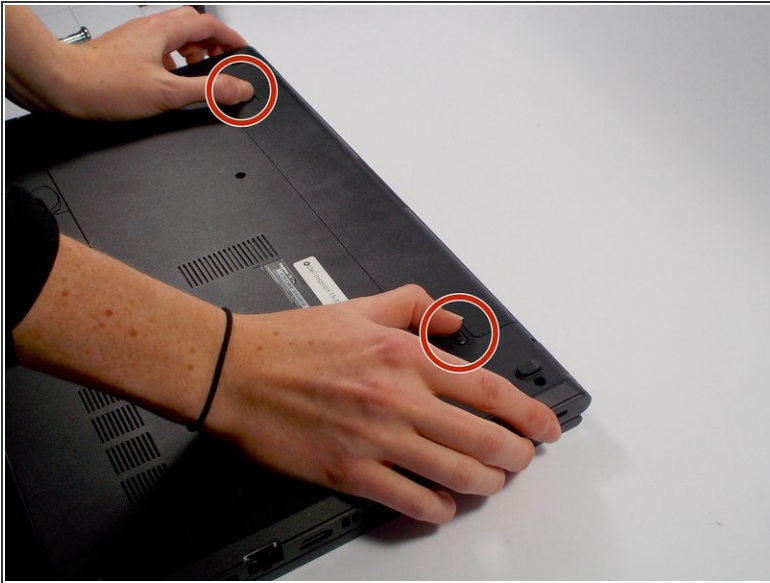
Written By: Edward Pacheco



 **TOOLS:**

- [Phillips #0 Screwdriver](#) (1)
-

## Step 1 — Battery



**!** Make sure your laptop is powered off completely and is not connected to the charger.

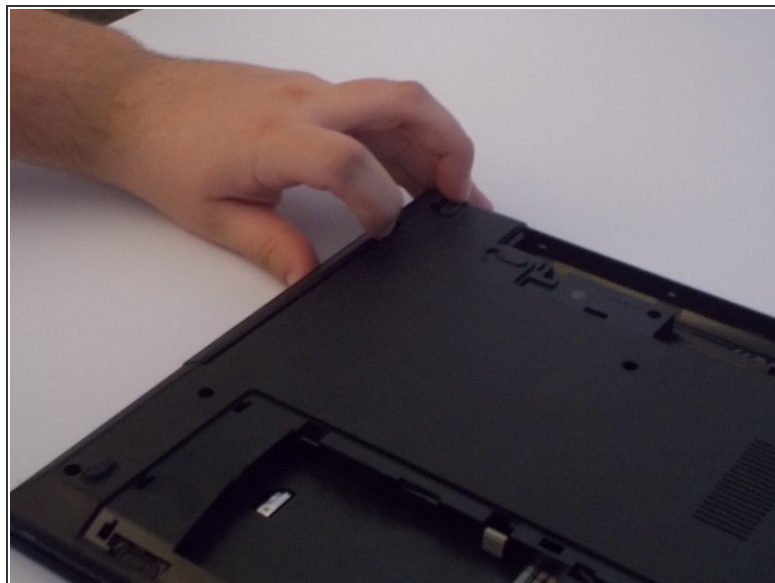
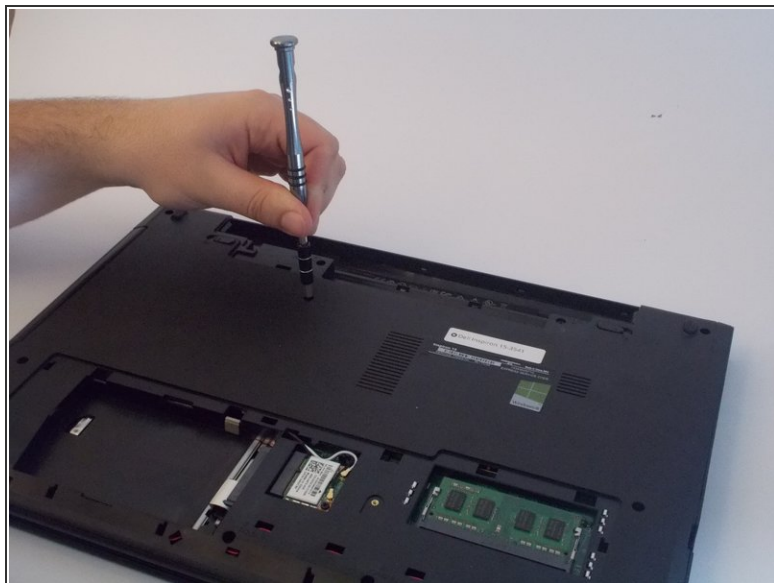
- Close the laptop and place it so that the back of the screen is lying flat on your work surface.
- Slide both of the battery-release latches towards the outer edges of the laptop to unlock the battery flap.

## Step 2



- Lift the battery at an angle using your fingertips and remove it from the laptop.
- i** Press and hold the power button for 5 seconds. This ensures that any remaining power will drain out of the computer.

### Step 3 — Optical Drive



- Remove the 5mm long Phillips #0 screw that is holding the optical drive in place, as pictured.
- You can now slide the optical disk drive out of the computer.
- ⓘ You do not have to remove the base cover or the Hard Drive if you want to remove just the optical drive.

To reassemble your device, follow these instructions in reverse order.