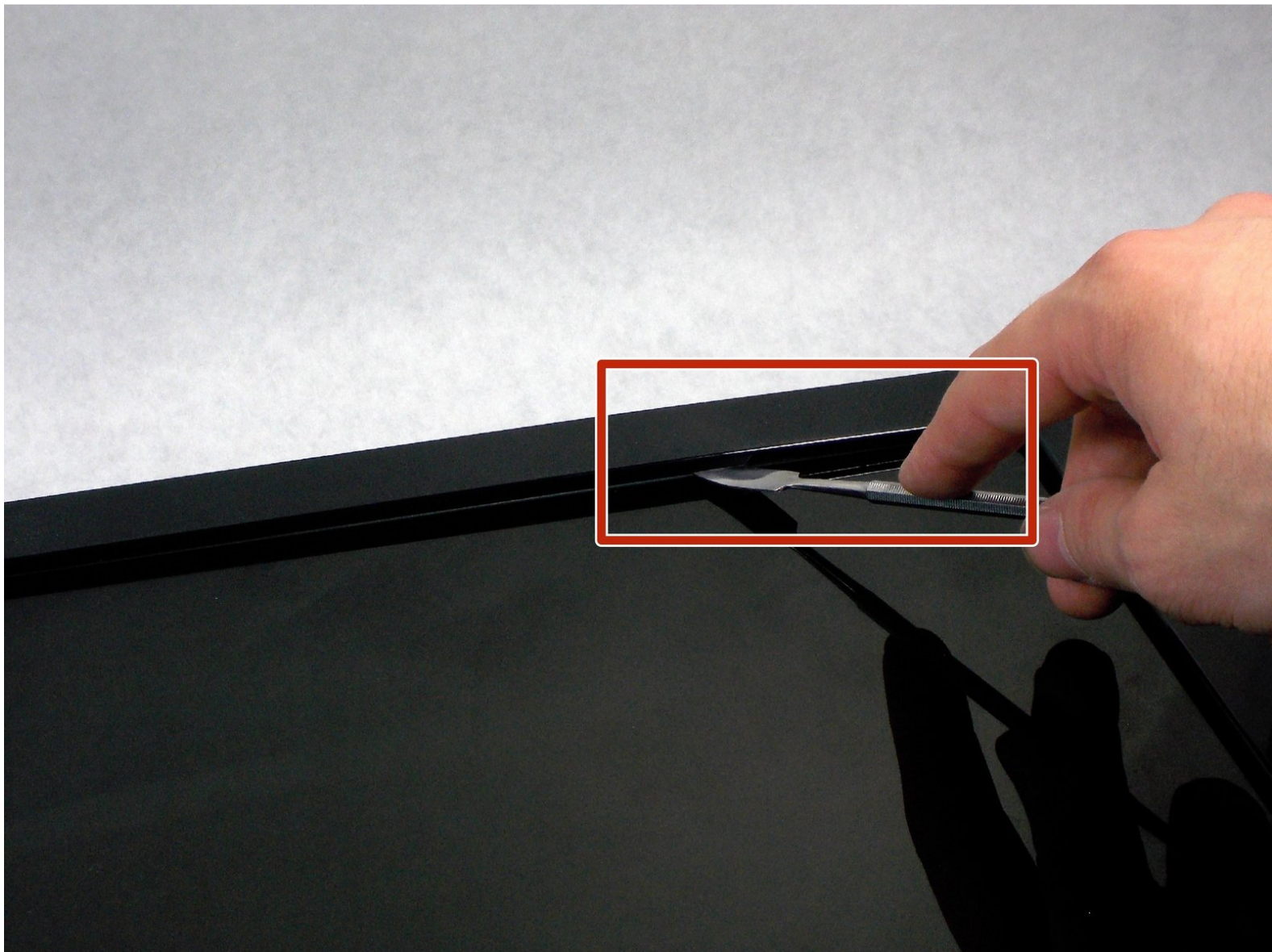




# HP w2216h Power Button Replacement

This guide will help replace the power button that would turn on/off the monitor.

Written By: Sadeq Taha



---

## INTRODUCTION

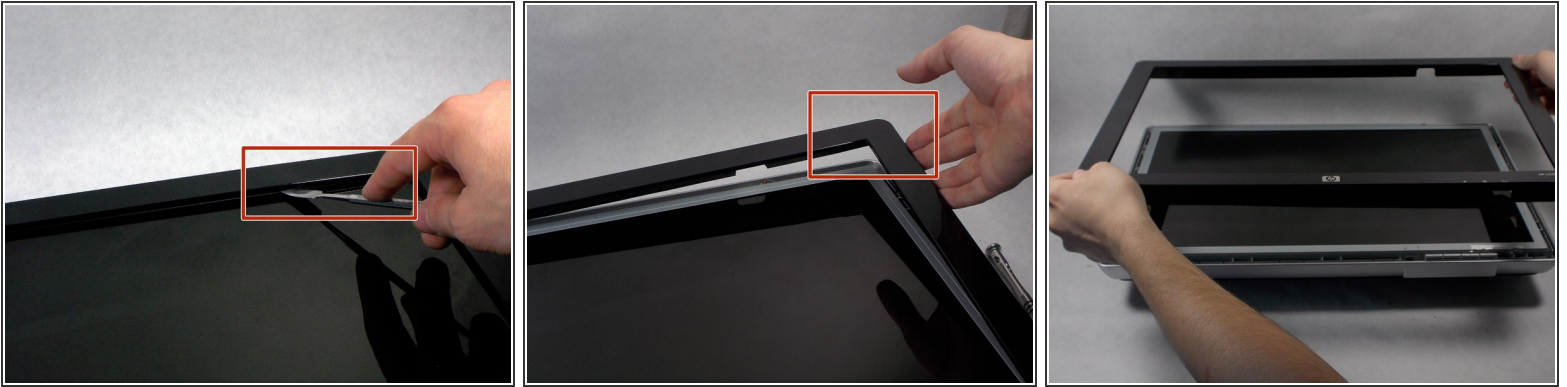
Is your monitor not powering on? Is the power button making a weird clicking noise? You might need to replace the power button.

---

### TOOLS:

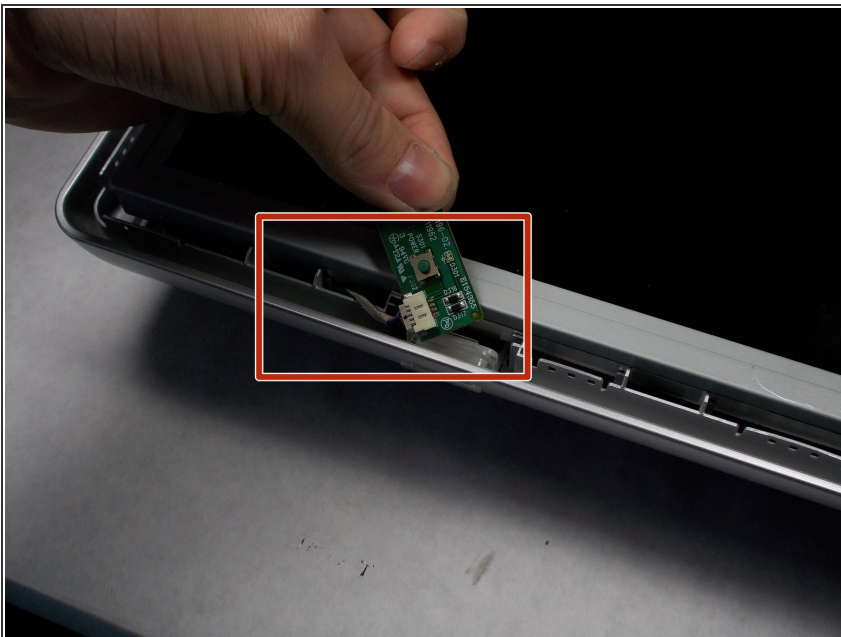
- [Metal Spudger](#) (1)
-

## Step 1 — Power Button



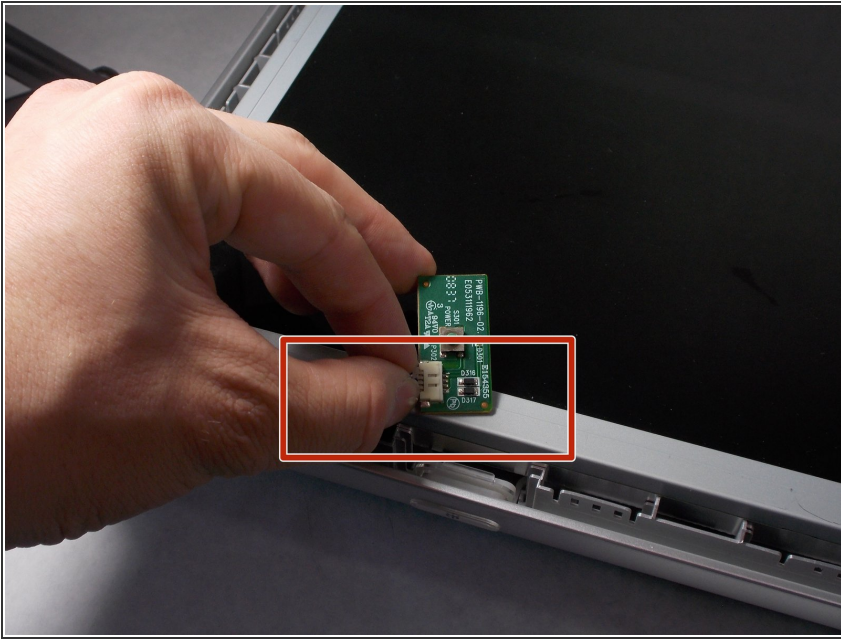
- ⚠** Do not put the metal spudger between the metal and the glass. It needs to go under the bezel and above the metal.
- Turn monitor so that the screen is facing you.
- Pry the black bezel from above the metal by placing your metal spudger between the bezel and the metal and twisting the tool slightly.
- i** The best places to pry are in the lower left and lower right corners of the black bezel.

## Step 2



- ⚠** Do not pull the screen away too hard, this could snap the power cable.
- Remove the power button from the top of the plastic frame.

### Step 3



- Remove the power cable by carefully sliding it out of its plug.
- ☑ Check if there is any tear or fray in the cable.

To reassemble your device, follow these instructions in reverse order.