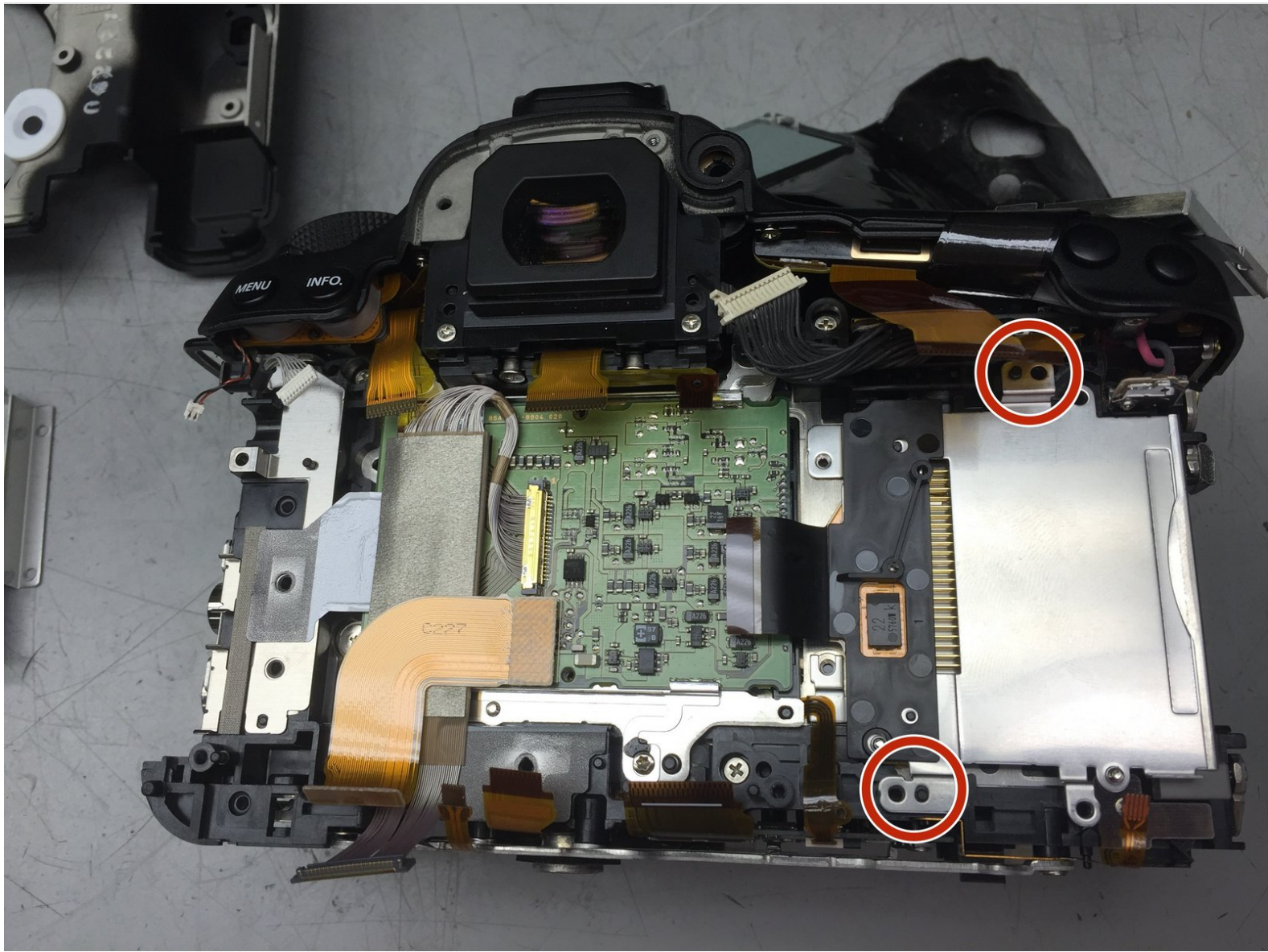




# Canon EOS 5D Mark III CF Card Reader Replacement

This guide will show you how to disassemble your Canon EOS 5D Mark III enough to replace your CF Card reader with bent pins. I haven't found any other reliable resources online that plainly list how to do this step by step, so here we are.

Written By: Matthew Zeller



## INTRODUCTION

This guide will show you how to disassemble your Canon EOS 5D Mark III enough to replace your CF Card reader with bent pins. I haven't found any other reliable resources online that plainly list how to do this step by step, so here we are.



### TOOLS:

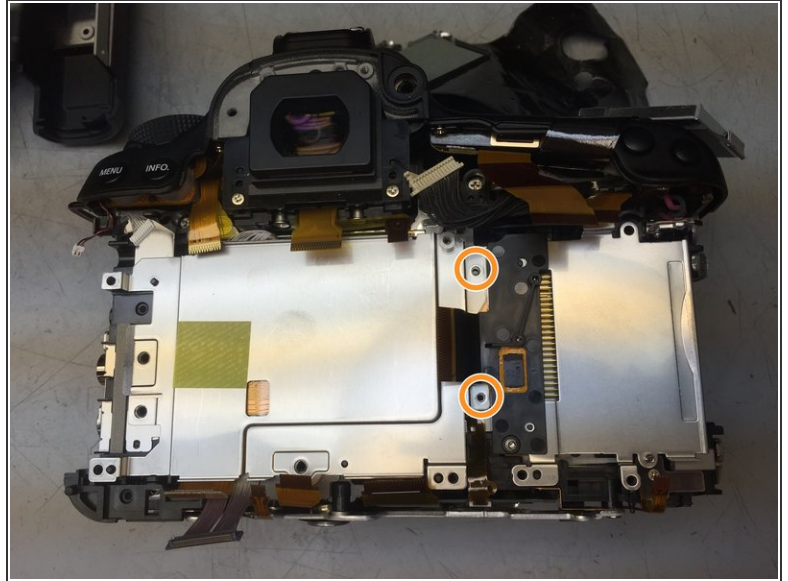
- [Phillips #00 Screwdriver](#) (1)



### PARTS:

- [CG2-3187-000](#) (1)

## Step 1 — CF Card Reader



- Insert the CF card reader and make sure the tabs on either side align with the black plastic nodes underneath.
- Replace the metal plate that supports the main board to the left of the card reader. It should overlap the two screw holes on the left of the card reader.
- Screw through the two openings on the right of the plate to secure CF Card Reader in place

To reassemble your device, follow these instructions in reverse order.