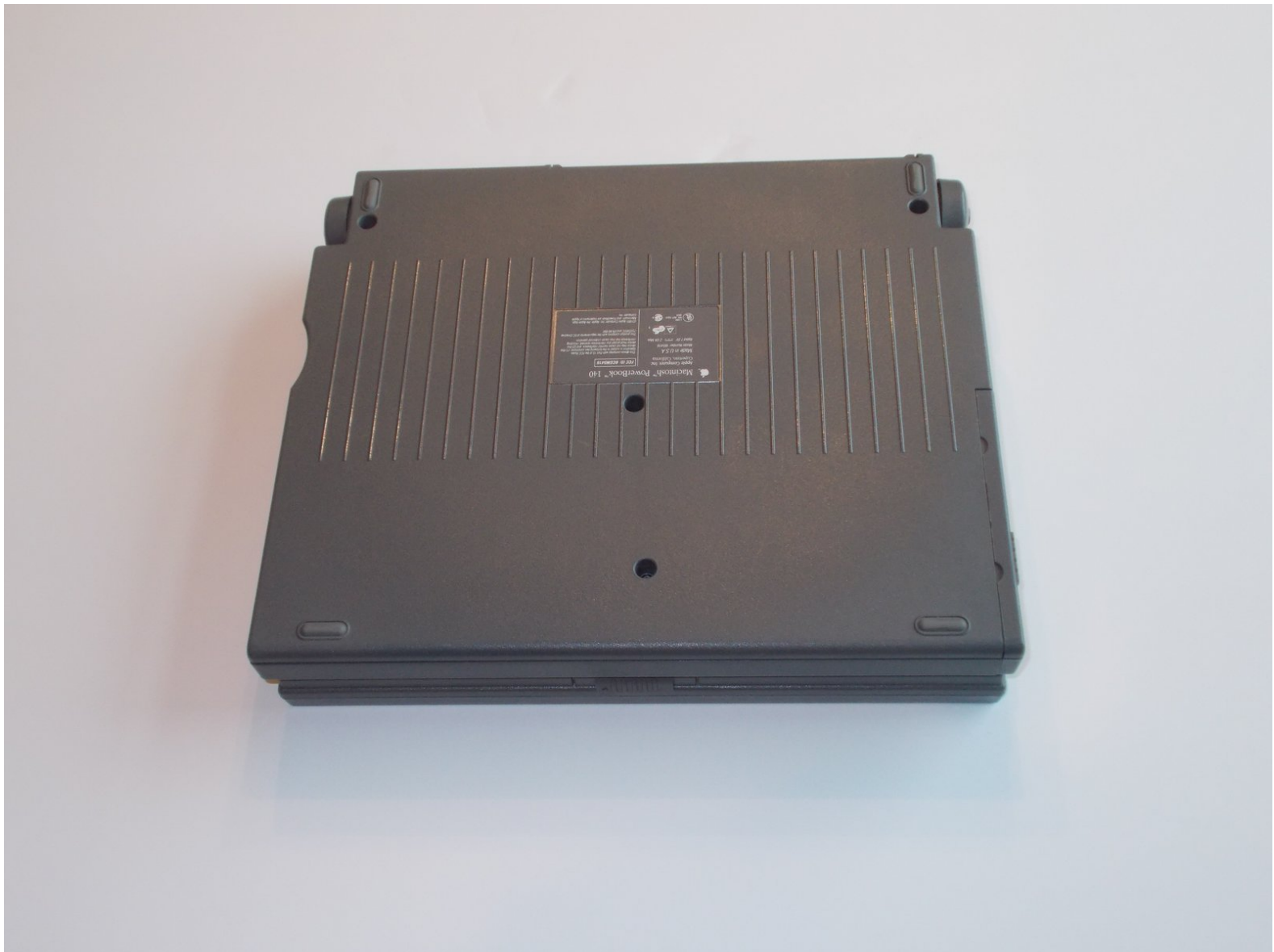




# Mac Powerbook 140 Sisterboard Replacement

Learn how to replace the sisterboard on a Macintosh Powerbook 140 computer.

Written By: Jack



## INTRODUCTION

Follow this guide to replace the Sisterboard in your Macintosh Powerbook 140 computer. Always ensure all of your parts are compatible and will not damage your computer or pose any health or safety hazards. Always make sure you keep track of all parts. Wash hands thoroughly after handling components. Most of all, USE COMMON SENSE.

Note- I am no computer expert. Please notify me of any errors or necessary changes. Thanks!



### TOOLS:

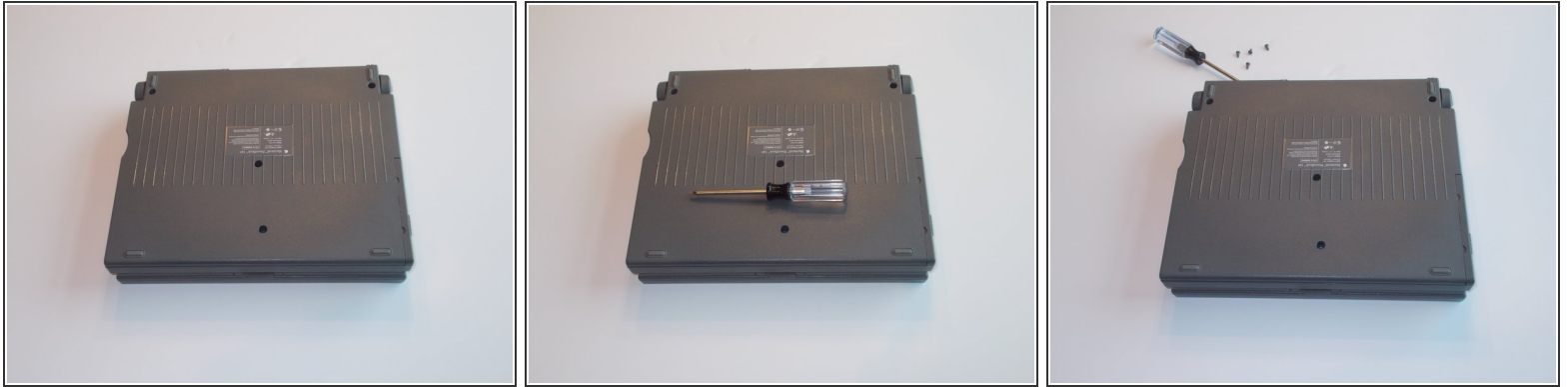
- T10 Star-headed screwdriver, T17 Star-headed screwdriver (1)



### PARTS:

- Macintosh 140-compatible sisterboard (1)

## Step 1 — Opening the Computer(bottom)



- Turn the 140 upside down and remove the 4 screws in the bottom with a T10 star-headed screwdriver

## Step 2 — Opening the Computer(back)



- Being careful to hold the top and bottom halves of the computer together, turn to the back side of the computer and remove the final screw with a T17 Star-headed screwdriver.

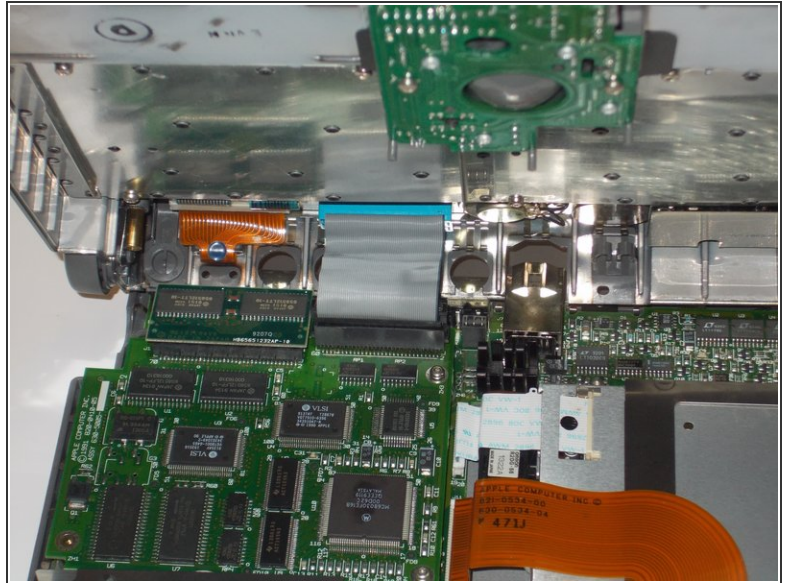
## Step 3 — Battery



- Slide the battery panel or switch (depending on your battery) toward the front of the computer, then pull the battery straight out.

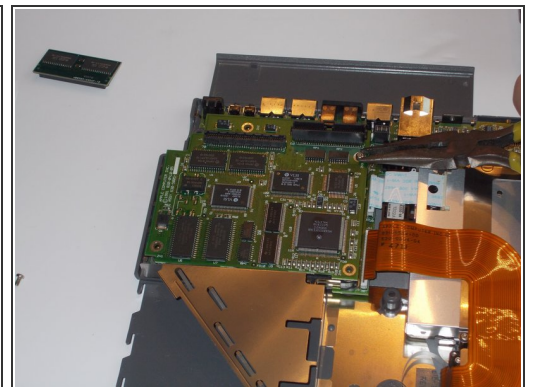
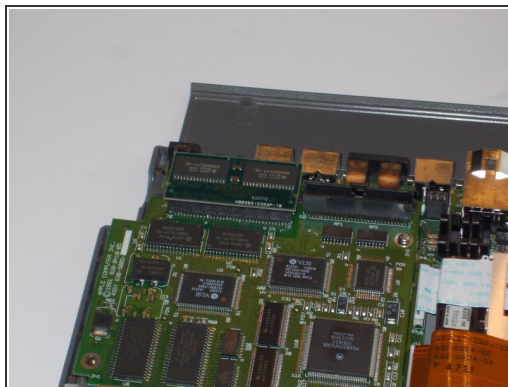
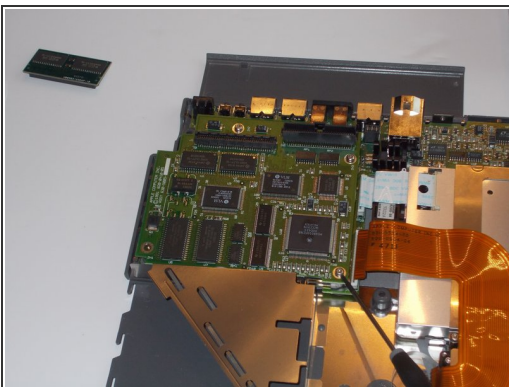


## Step 4 — Removing the Top



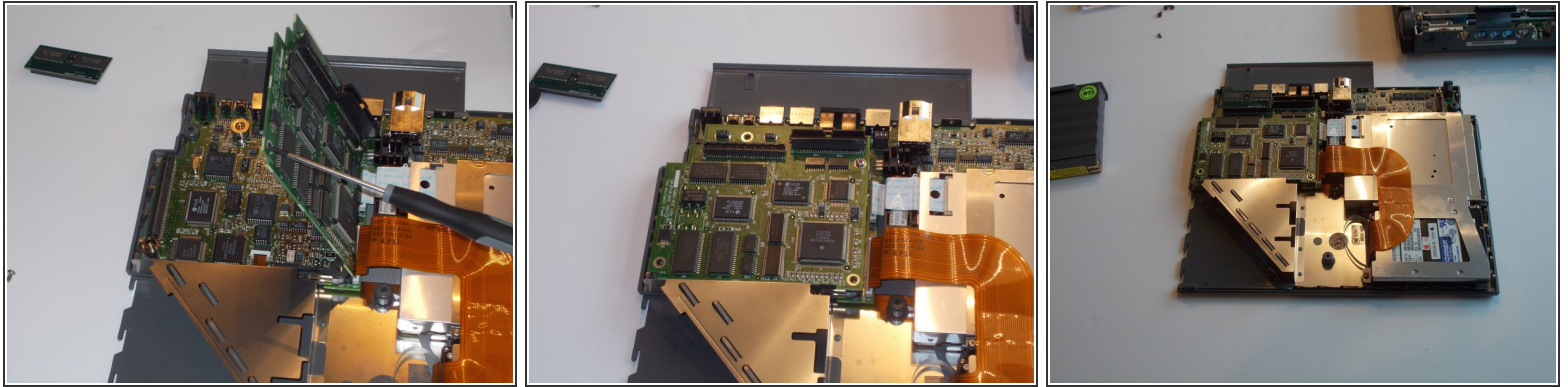
- CAREFULLY lift the back of the screen and keyboard unit (the top of the computer) and GENTLY push the front left and right corners away from the bottom unit until a click is heard. Then, SLOWLY lift the top unit and remove the interconnect cable (the large somewhat brittle cable connecting the two halves) from its socket in the sisterboard.

## Step 5 — Taking off the Sisterboard



- Use the T17 Star-headed screwdriver to remove the 4 screws holding the sisterboard in place. NOTE THE FOLLOWING: If your computer has a RAM or PRAM extension card, remove it. Also, some screws may be VERY tightly inserted. To remove the stubborn screws, CAREFULLY and TIGHTLY grip the screw with needle-nosed pliers, and twist the screw loose

## Step 6 — Putting in the new Sisterboard



- On the left side of the sisterboard, gently pull up to separate the sisterboard from the motherboard. Being careful not to confuse the old and new sisterboard, place the new sisterboard where the old one was. Be sure that all pins connecting the mother and sisterboards are straight and in the socket of the sisterboard.

To reassemble your device, follow these instructions in reverse order.