



# Nintendo Wii U Button Replacement

This guide will show you how to replace the front panel buttons on the Wii U console. This includes the power button, eject button, and sync button.

Written By: Emily Vasquez



---

## INTRODUCTION

Use this replacement guide for step-by-step instruction on how to replace the power and accompanying buttons on the Wii U console's front face panel.

---

### TOOLS:

- [Spudger](#) (1)
  - [Phillips #0 Screwdriver](#) (1)
  - [Phillips #1 Screwdriver](#) (1)
  - [Y1 Tri-point Screwdriver](#) (1)
-

## Step 1 — Button Replacement



- You will first need to find all the screws hidden underneath the black (or white) square stickers. They are all located on the bottom side of the Wii U.
- ⓘ Use a spudger to remove the stickers if it is difficult to peel off with your fingers.

## Step 2



- Remove the five Phillips #0 screws.
- Remove the four Tri-Wing Y1 screws.

### Step 3



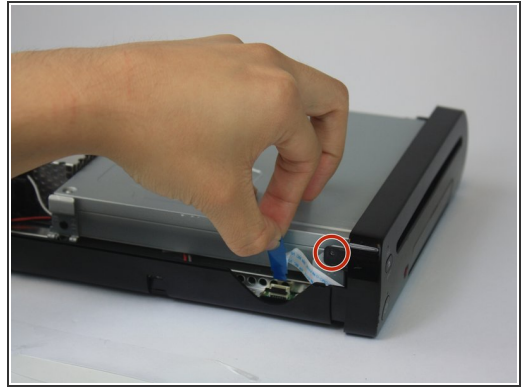
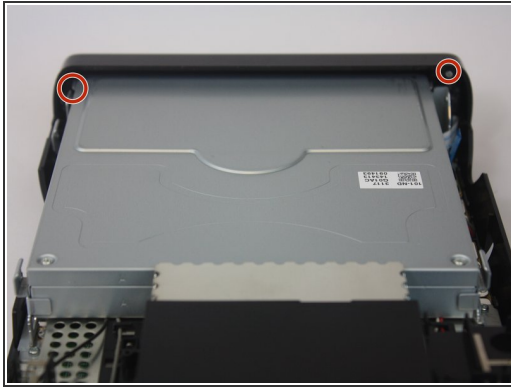
- Remove the CMOS battery door on the left side of the console.
- Once the door is removed, remove the three Phillips #0 screws.

### Step 4



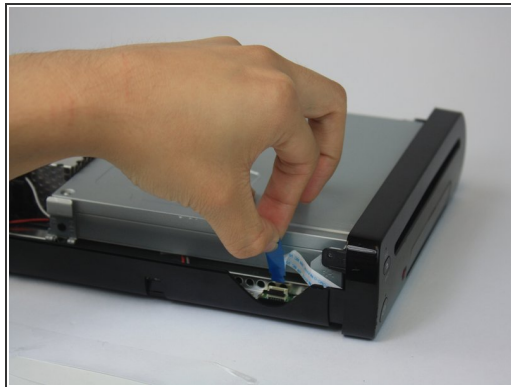
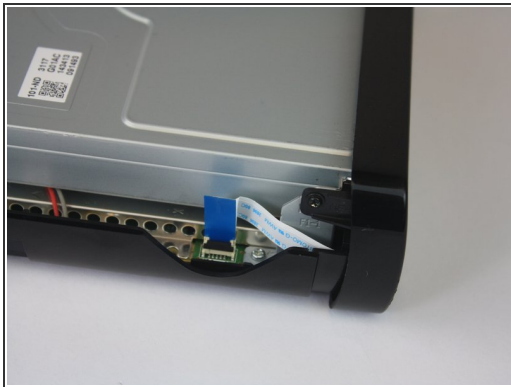
- Gently pry off the top lid of the Wii U.

## Step 5



- Rotate the device so that the front plate is facing you.
- Remove the two Phillips #1 screws.

## Step 6



- Remove the ribbon cable and separate the front plate from the main console.



## Step 7



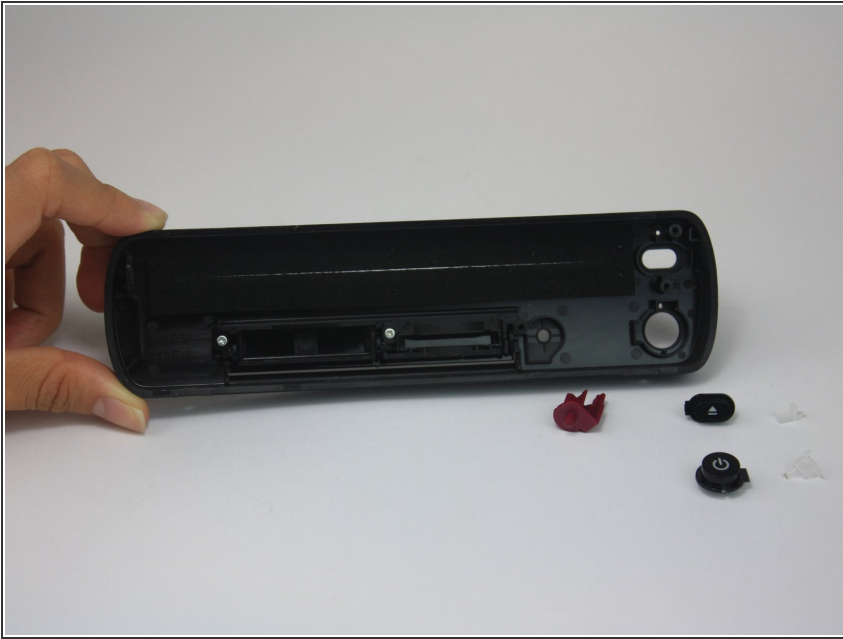
- Remove the three Phillips #1 screws.

## Step 8



- Once unscrewed, remove the black braces that hold the power button, eject button, and sync button in place.

## Step 9



- Remove the desired button(s).

To reassemble your device, follow these instructions in reverse order.