



# RCA RCT6773W22 Battery Replacement

This guide will illustrate how to replace the battery.

Written By: Kelsea Weber



---

## INTRODUCTION

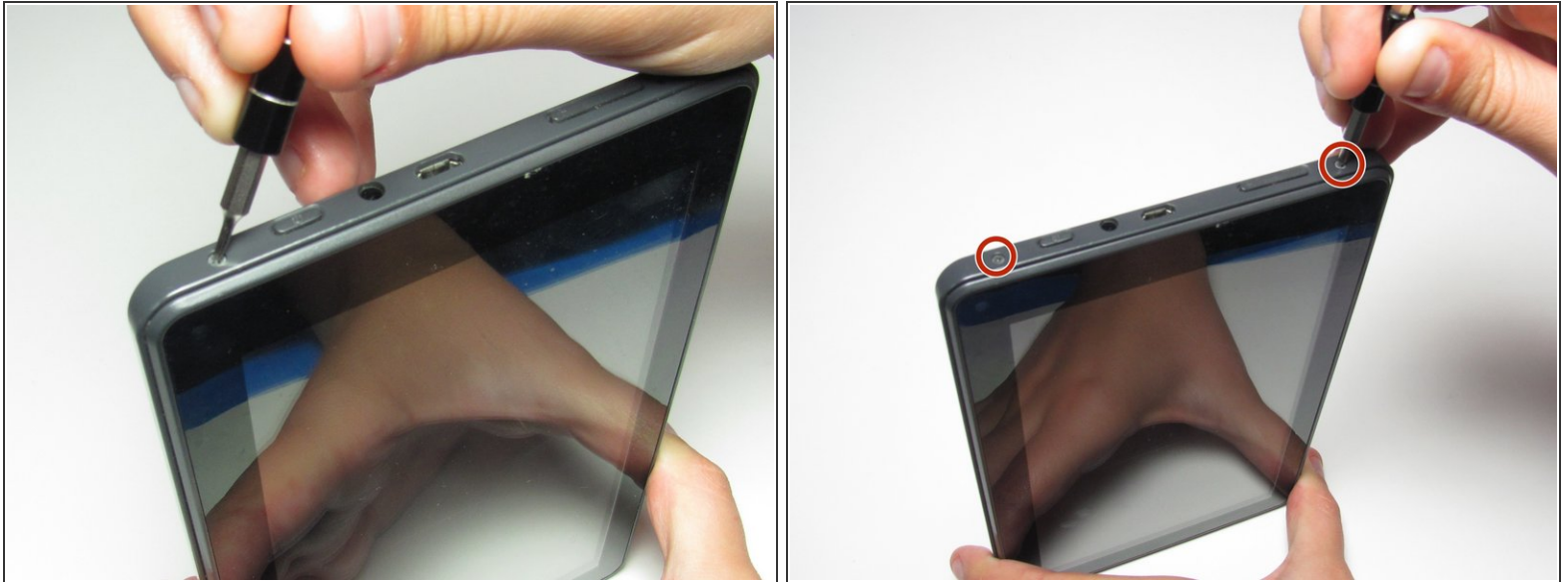
This guide will illustrate how to replace the battery.

---

### TOOLS:

- [Phillips #000 Screwdriver](#) (1)
  - [iFixit Opening Tools](#) (1)
  - [Portable Soldering Iron](#) (1)
-

## Step 1 — Battery



- Remove the two 5mm screws from the bottom of the device using a Phillips #000 screwdriver.

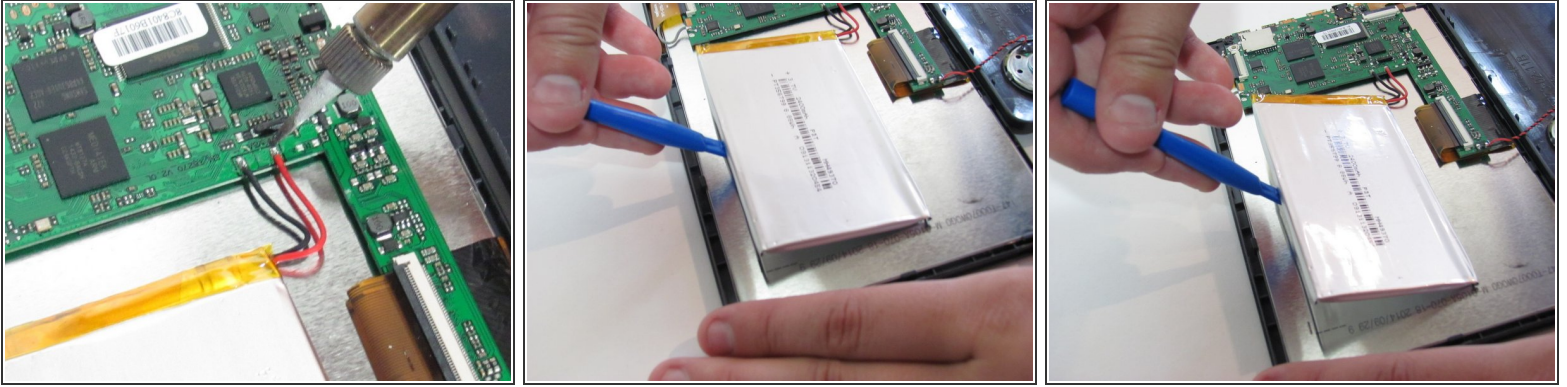
## Step 2



- Place the plastic opening tool between the case and the screen.
- Slide the tool clockwise around the case until all the clips are removed.

**⚠** Do not completely separate the case from the screen because there is a wire connecting the motherboard to the speaker.

## Step 3



- Desolder the two wires that connect the battery to the motherboard.
- ⓘ Learn more about soldering with this [soldering technique guide](#).
- Using the blue plastic opening tool, lift the battery away from the device.

To reassemble your device, follow these instructions in reverse order.