



HMDX Chill Disassembly

This guide will show how to disassemble the HMDX Chill Speaker.

Written By: Jourdan Holubasch



INTRODUCTION

If your HMDX Chill is having any kind of issue this guide will show how to disassemble the device in order to begin the process of fixing your issues.

TOOLS:

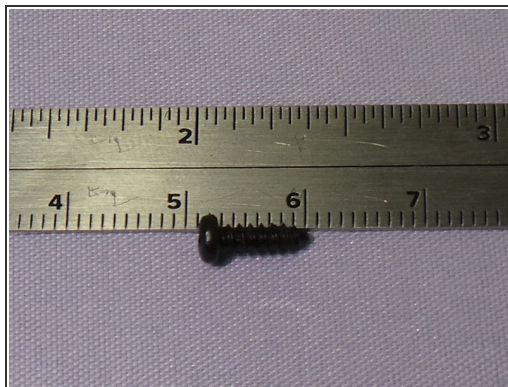
- [Phillips #1 Screwdriver](#) (1)
 - [Metal Spudger](#) (1)
-

Step 1 — Remove Rubber Base



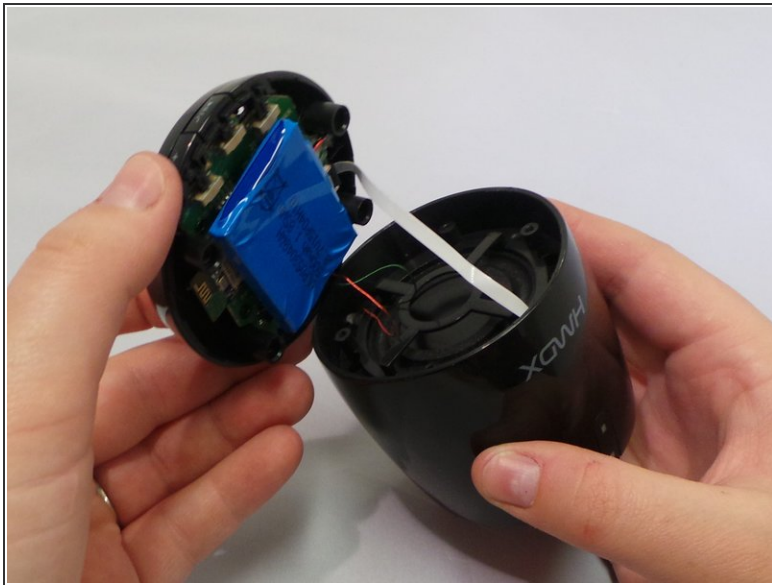
- Insert a metal spudger under the rubber base and pry the rubber base off.

Step 2 — Unscrew the Four Bottom Screws



- Remove the four 0.9 inch Phillips screws from the base of the device.

Step 3 — Remove the Base of the Speaker



- Grip the base of the HMDX Chill and pull upwards.

To reassemble your device, follow these instructions in reverse order.

This document was last generated on 2019-08-18 02:43:48 PM.