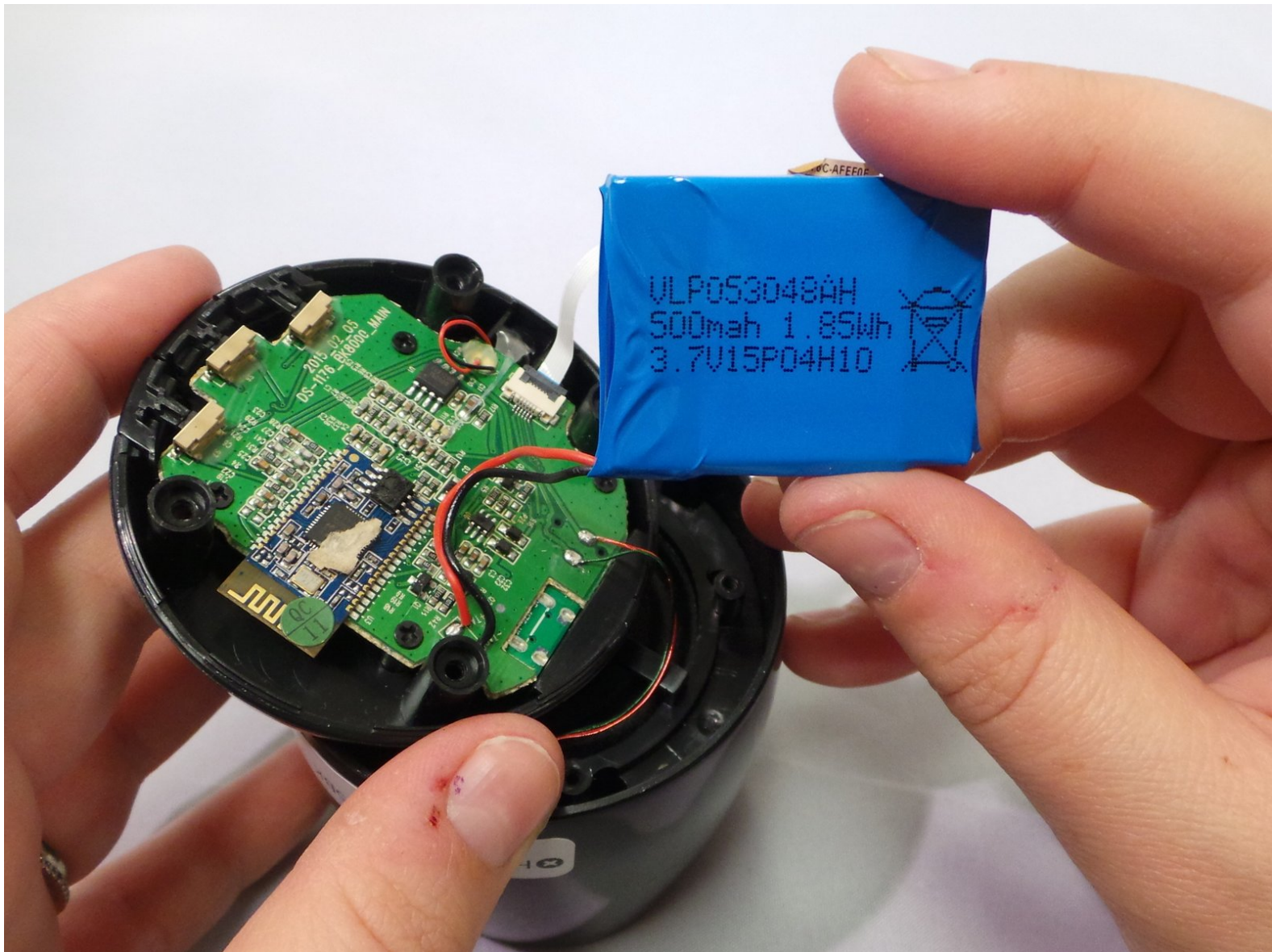




HMDX Chill Battery Replacement

This guide will show how to replace the battery on the HMDX Chill Speaker.

Written By: Jourdan Holubasch



INTRODUCTION

If the HMDX Chill begins to show issues with its ability to charge and the issue is not related to the charging port or charging cable it may be time to change the battery. This guide will show how to disassemble the device in order to locate and find the battery along with showing all of the attachments from the battery to the motherboard in order to properly replace the battery.

TOOLS:

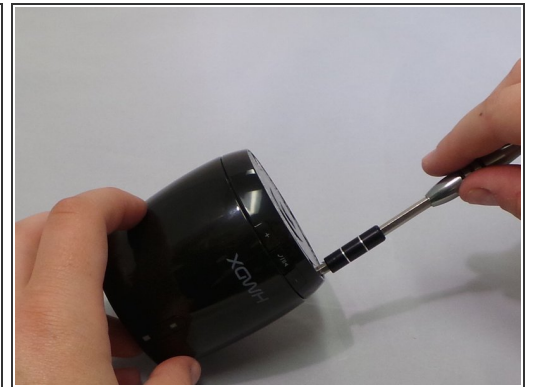
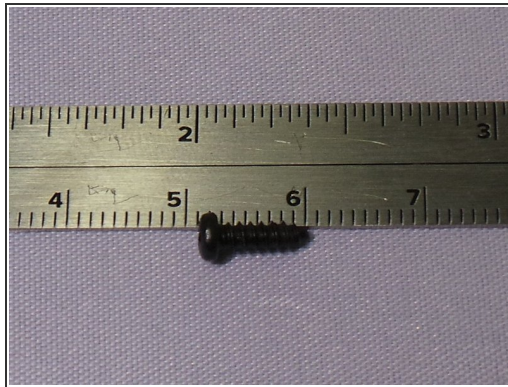
- [Metal Spudger](#) (1)
 - [Phillips #1 Screwdriver](#) (1)
 - [Soldering Iron](#) (1)
-

Step 1 — Remove Rubber Base



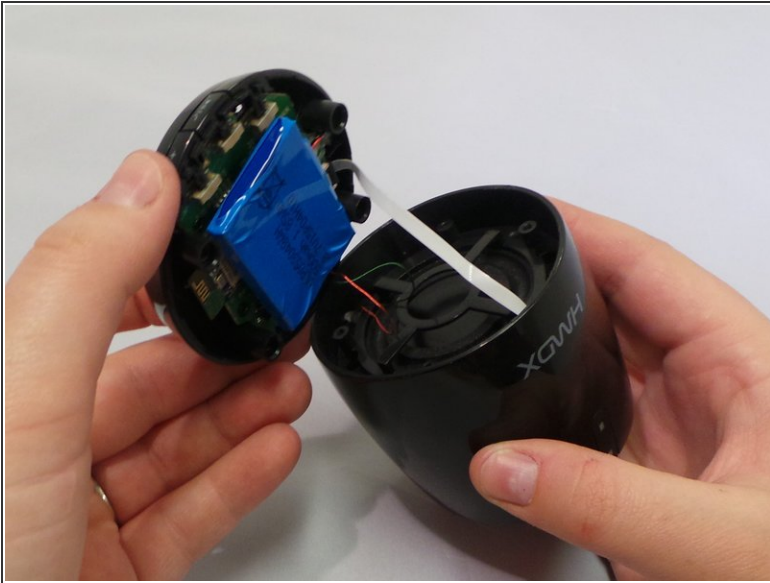
- Insert a metal spudger under the rubber base and pry the rubber base off.

Step 2 — Unscrew the Four Bottom Screws



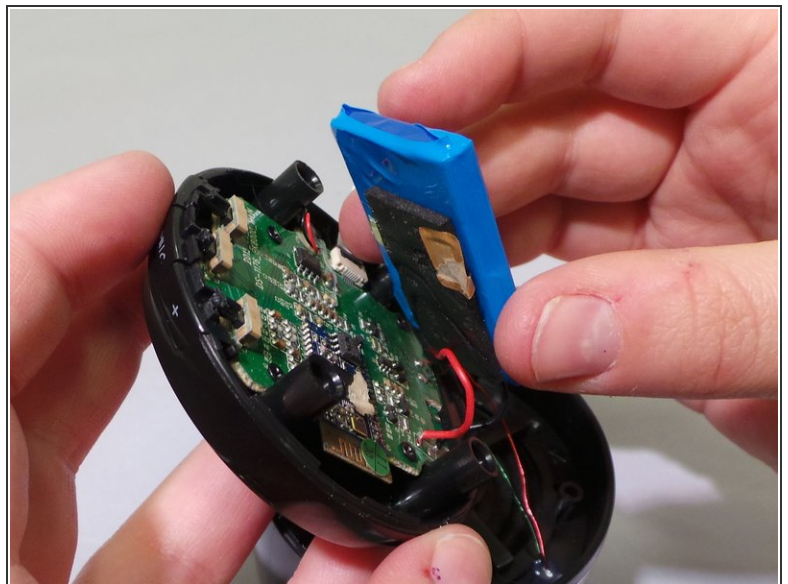
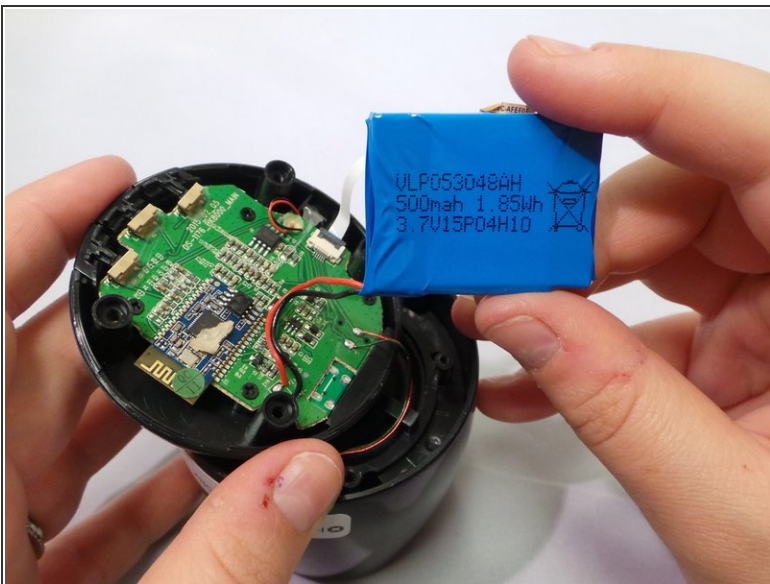
- Remove the four 0.9 inch Phillips screws from the base of the device.

Step 3 — Remove the Base of the Speaker



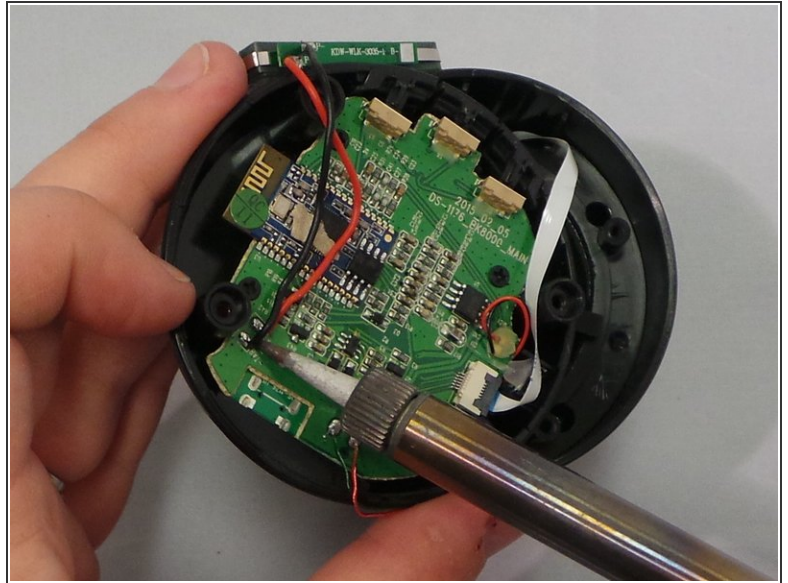
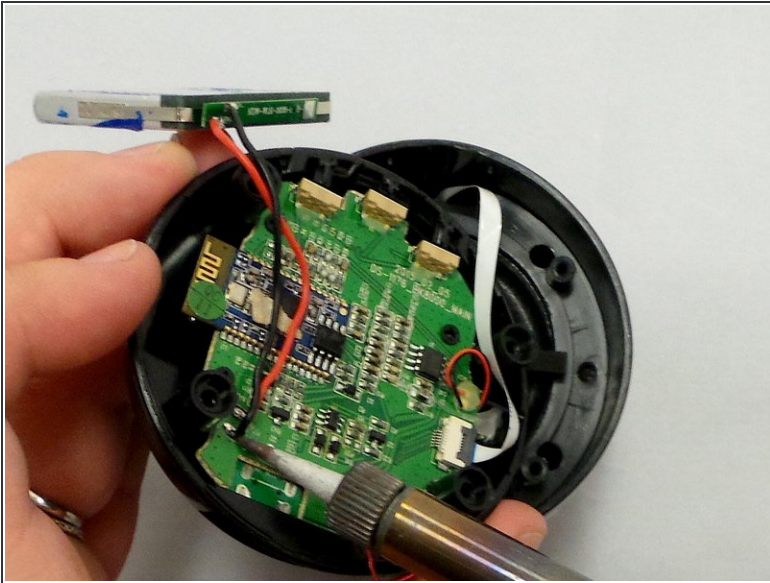
- Grip the base of the HMDX Chill and pull upwards.

Step 4 — Locate the Battery



- Once the base has been removed from the rest of the speaker locate the battery.
ⓘ It may or may not be in a wrapper.

Step 5 — Unsolder the Battery



- Locate the wires that attaches from the battery to the motherboard.
- Using a soldering iron desolder the wires from the motherboard.

To reassemble your device, follow these instructions in reverse order.

This document was last generated on 2019-06-17 08:32:38 AM.