



HP Stream 8 Midframe Replacement

This guide will walk you through the steps of replacing the midframe of you HP Stream 8 if it is cracked or damaged.

Written By: Nick Miller



 **TOOLS:**

- [Phillips #00 Screwdriver \(1\)](#)
-

Step 1 — Midframe



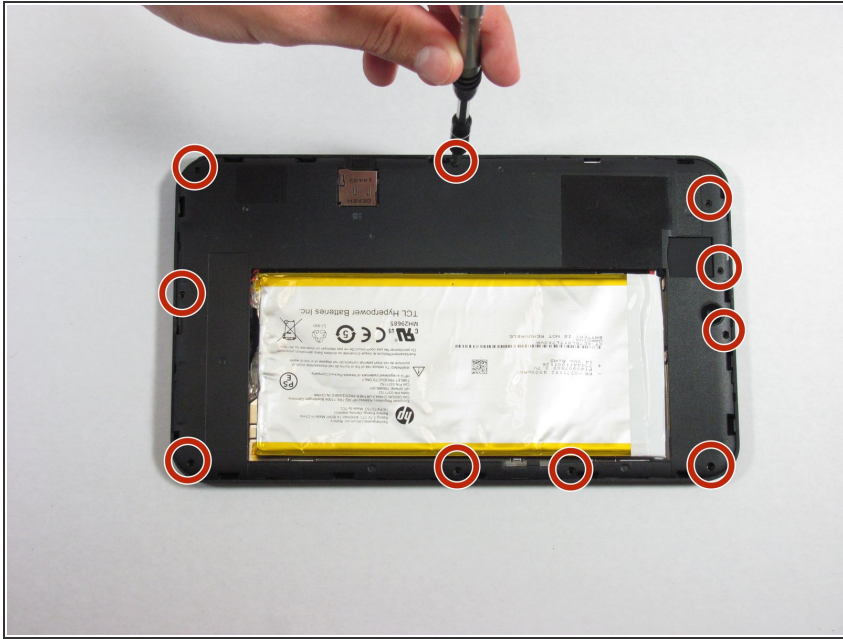
- Use your nail or a spudger to pry the back cover off of the device.

Step 2



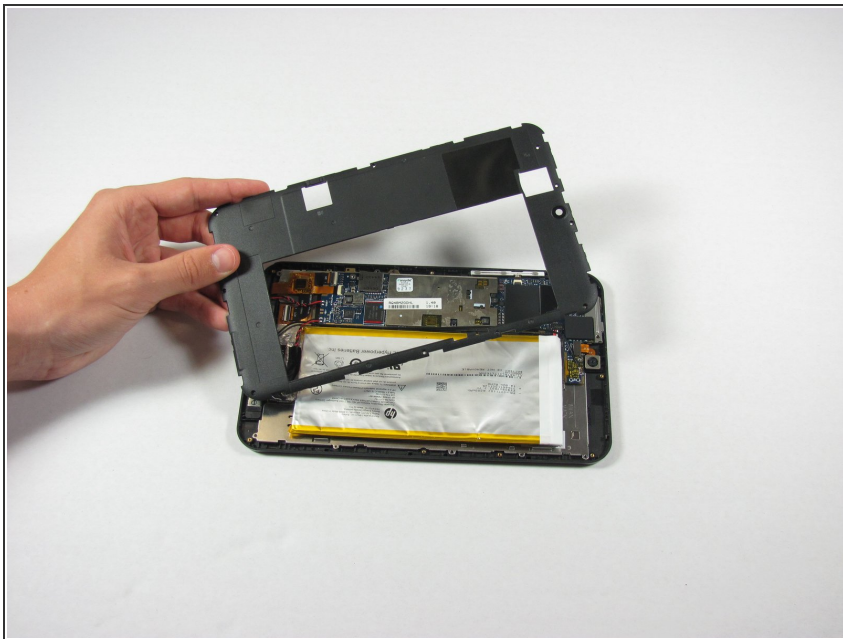
- Slide your finger around the rest of the back cover, lifting it completely off of the device.

Step 3



- Remove ten Phillips #00 screws from the inside cover.

Step 4



- Pry up the inside cover the same way as in the first step.

To reassemble your device, follow these instructions in reverse order.