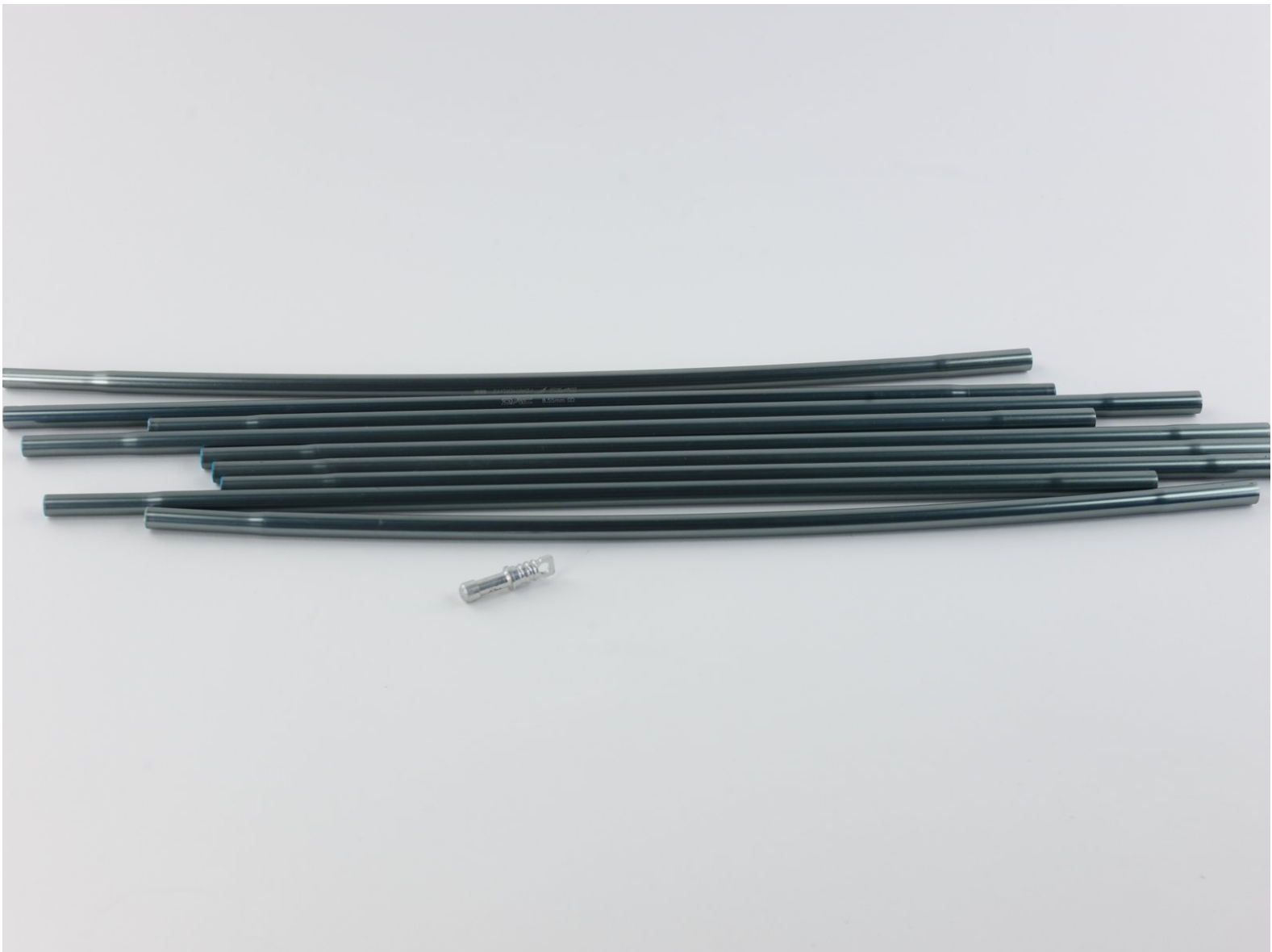




# Tent Pole Shock Cord Replacement

This guide will illustrate how to replace the shock cord in tent poles.

Written By: Kelsea Weber



---

## INTRODUCTION

This guide will illustrate how to replace the shock cord in tent poles with a bobby pin and string. There are many other methods that can be used to feed the shock cord through tent poles, but when away from home, a bobby pin and string can save the day.

---

### TOOLS:

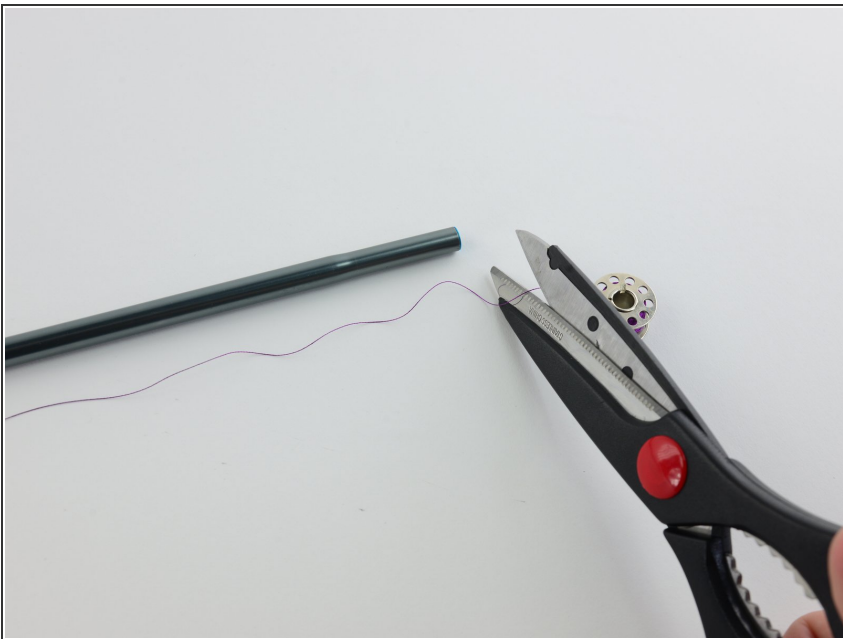
- [Shock Cord](#) (1)
  - [Utility Scissors](#) (1)
  - [Bobby pin](#) (1)
-

## Step 1 — Tent Pole Shock Cord



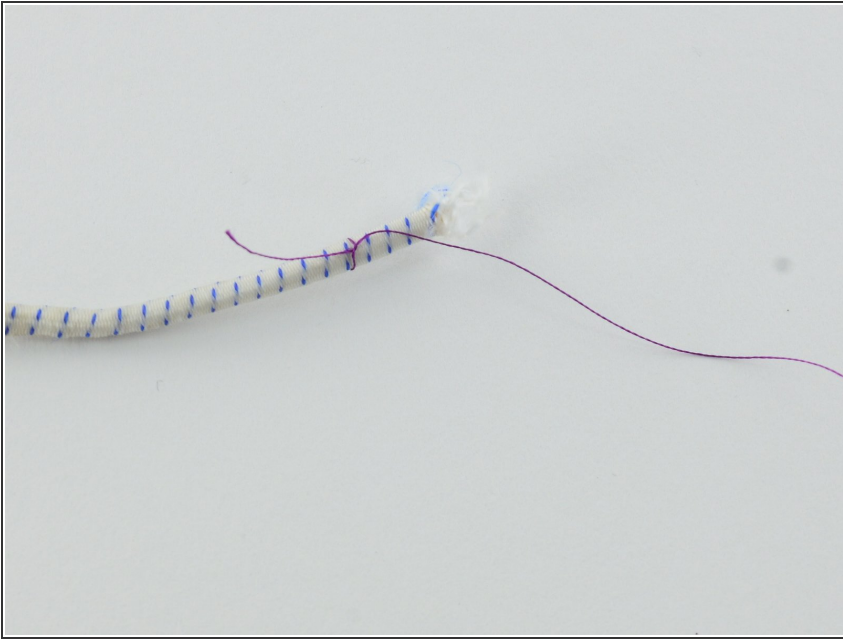
- Remove the old shock cord from the tent poles.

## Step 2



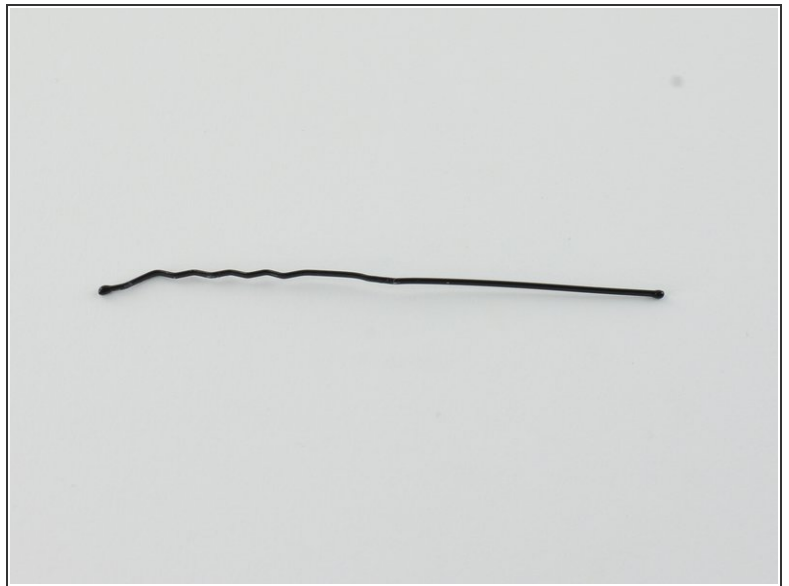
- Measure and cut the string to the length of one tent pole piece.
- ⓘ Be sure to leave enough room on each end for knots.

### Step 3



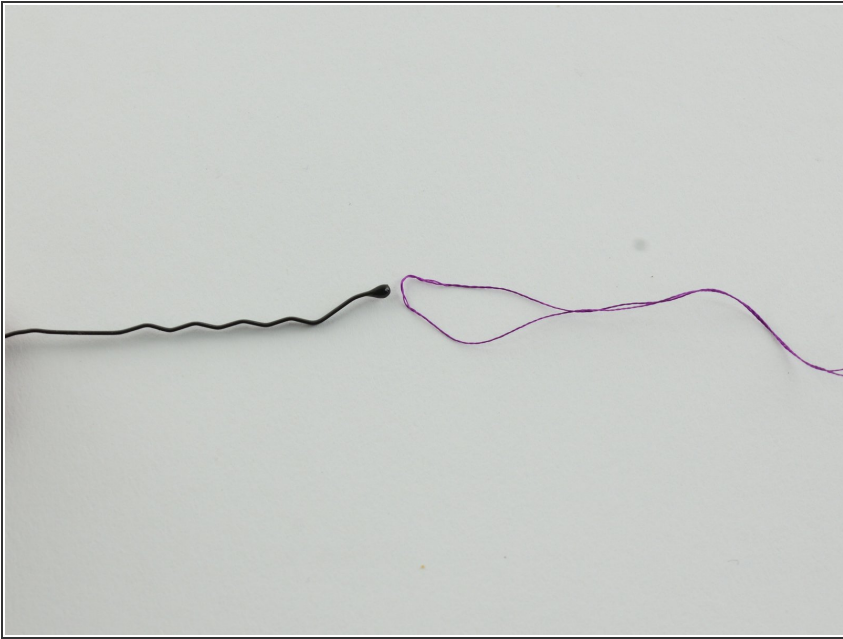
- Tie the string to the end of the shock cord.

### Step 4



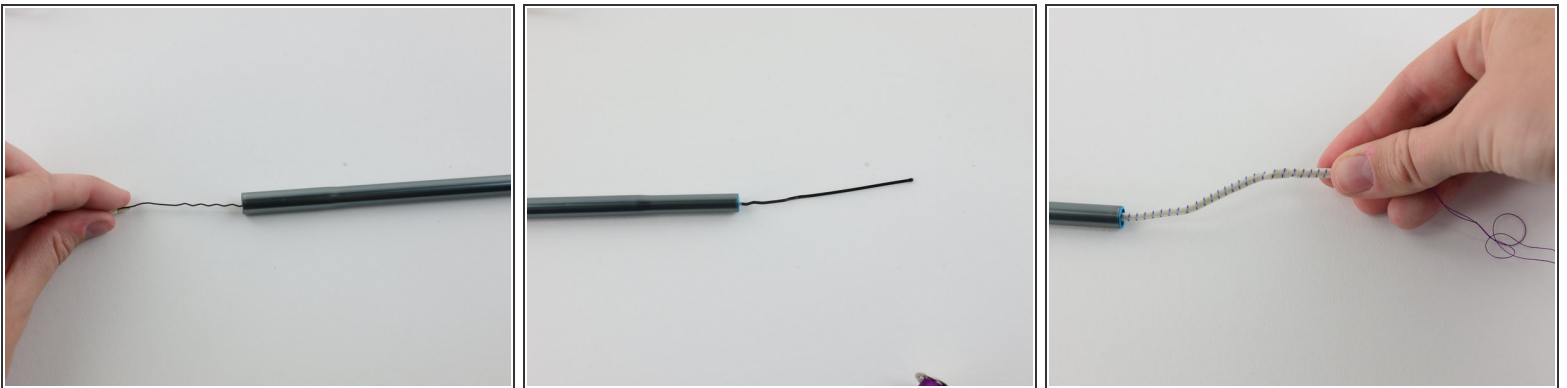
- Use your hands or pliers to flatten out a bobby pin.
- ⓘ Any long, thin, metal object will work to help feed the string and cord through the poles.

## Step 5



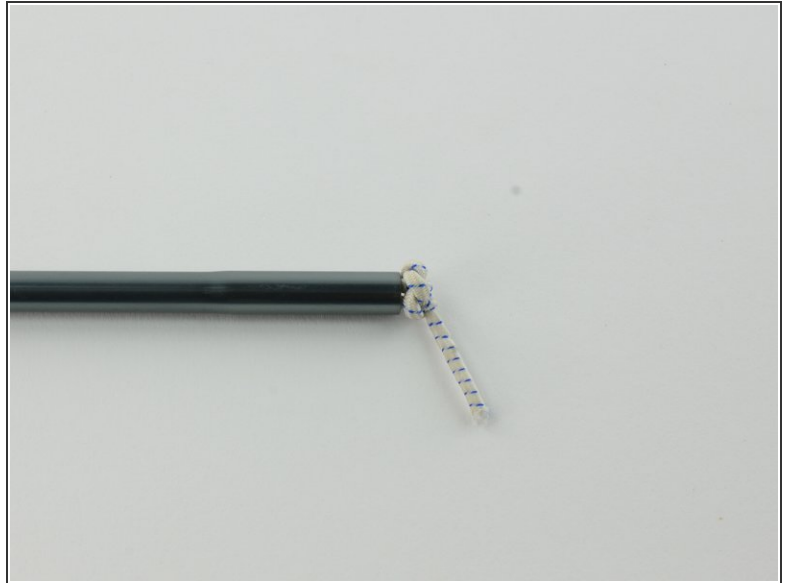
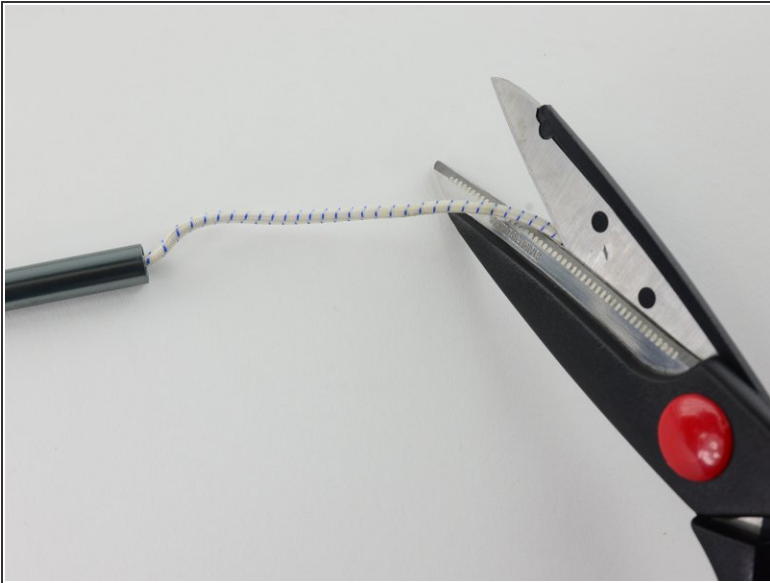
- Tie the string around the end of the bobby pin.
- The string and bobby pin will be used to feed the shock cord through the pole.

## Step 6



- Drop the bobby pin and string through the tent pole pieces one by one.
- Once the bobby pin reaches the opposite end of each pole, slowly pull the string to feed the shock cord through.

## Step 7



- Once the last piece has been threaded, untie or cut the string from the shock cord.
- Tie a large knot against the right end of the last piece.
- ⓘ The knot must be large enough to prevent the shock cord from slipping through the pole.

## Step 8



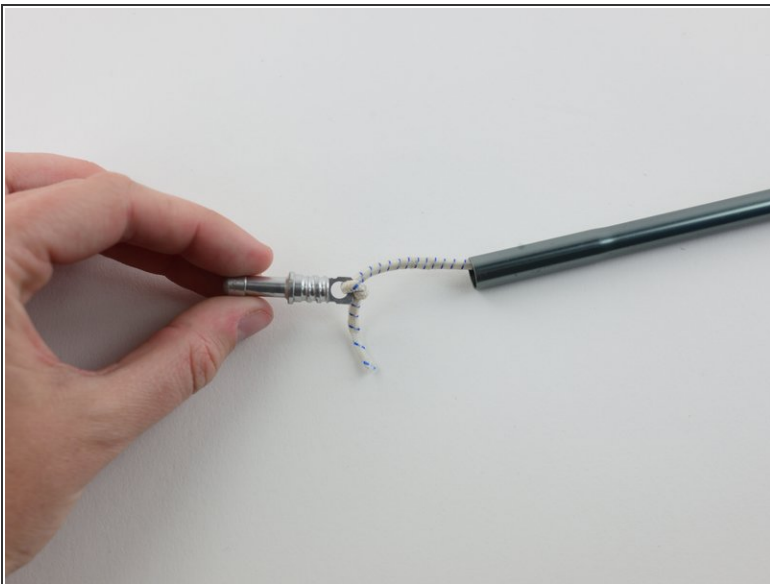
- Connect the tent poles.

## Step 9



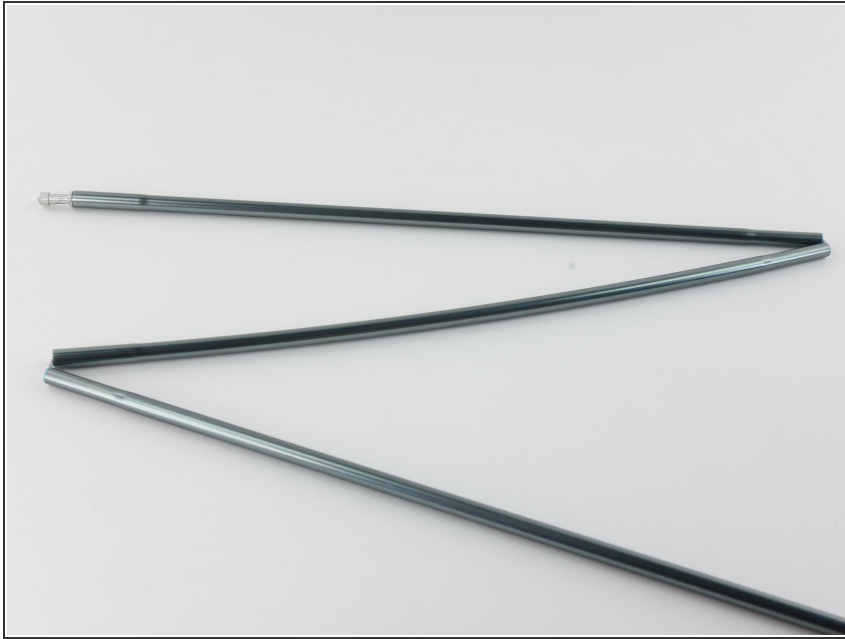
- Cut the shock cord from the left end of the first pole piece leaving room on the end for knots.
- ⓘ Leaving extra shock cord on the end will also allow you to adjust the tension in the shock cord later on.

## Step 10



- Tie a large knot around the tent pole end piece.
- Fit the end piece into the left end of the first pole.
- ⓘ If your poles do not come with an end piece, simply tie a large knot in the shock cord. The knot must be large enough to prevent the shock cord from pulling through.

## Step 11



- Disconnect the pole pieces.
- Fold the pieces to test the shock cord tension.
- ⓘ If the shock cord is too tight, reconnect the poles and adjust the shock cord length between the left end of the first pole and the end piece.

To reassemble your device, follow these instructions in reverse order.

This document was last generated on 2019-07-09 02:48:52 PM.