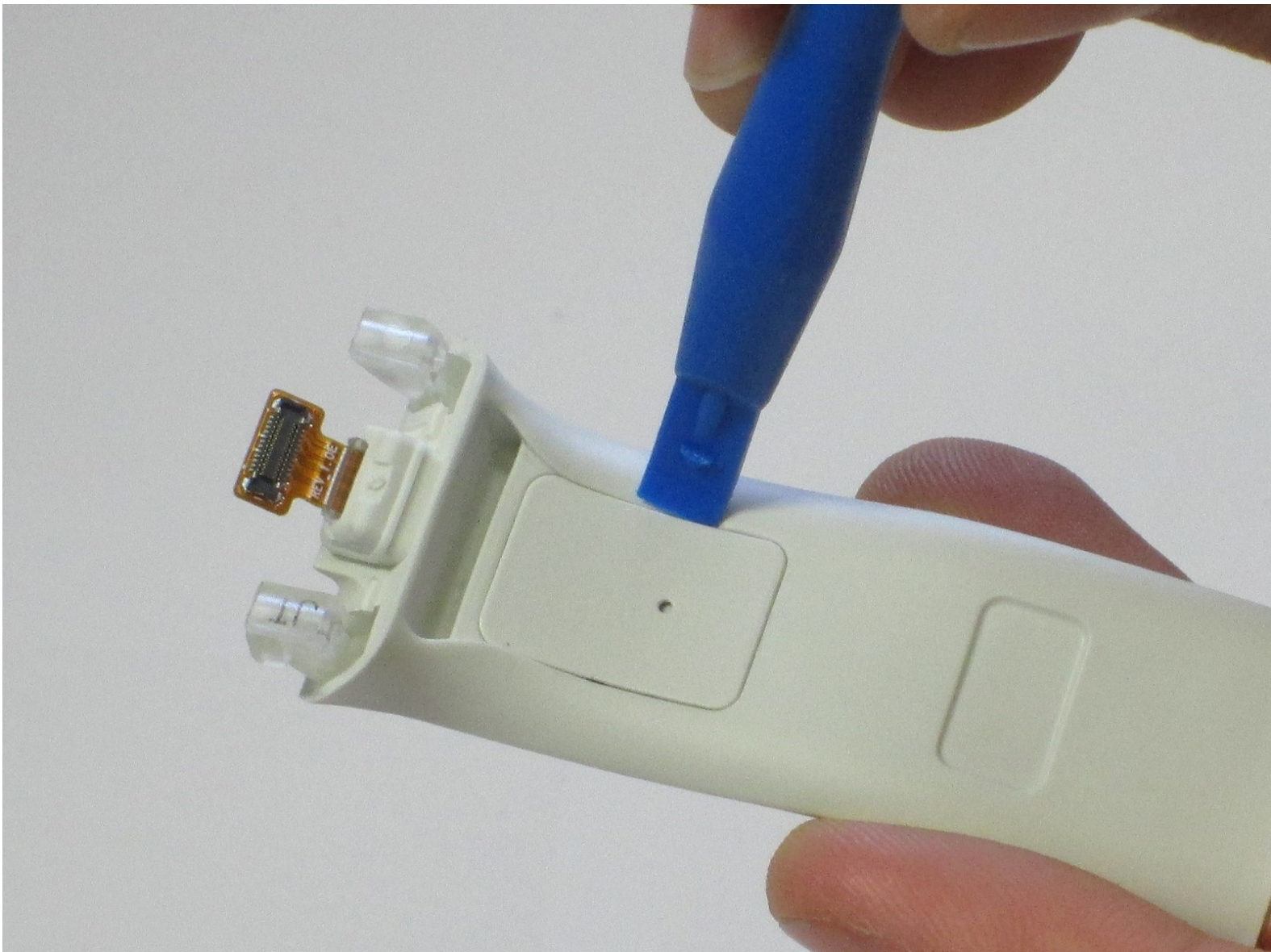




Samsung Galaxy Gear Camera Replacement

This guide will cover how to replace the camera for this device.

Written By: Jenny Verheul



INTRODUCTION

This guide is a continuation of the band replacement guide. It is for showing how to replace the camera.

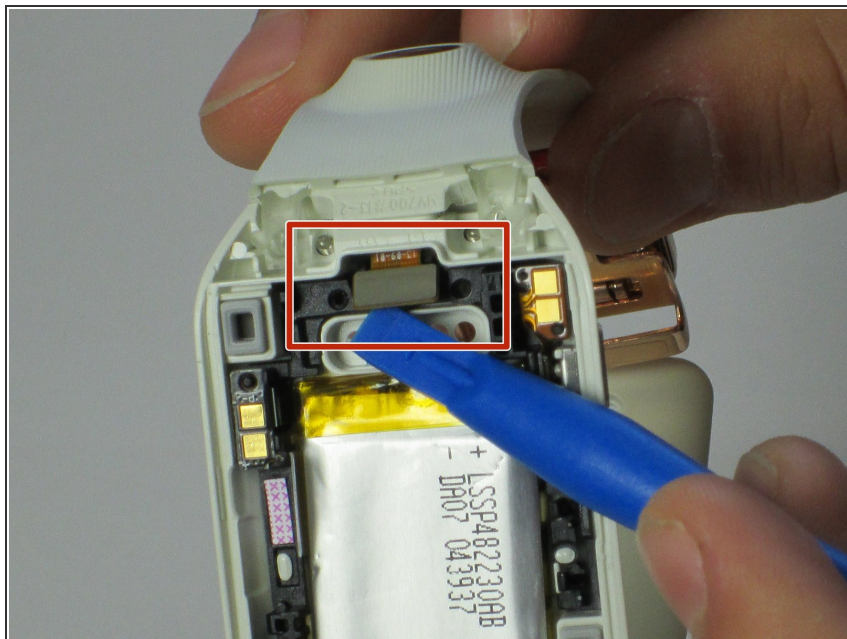
TOOLS:

- [T5 Torx Screwdriver](#) (1)
- [iFixit Opening Tools](#) (1)

PARTS:

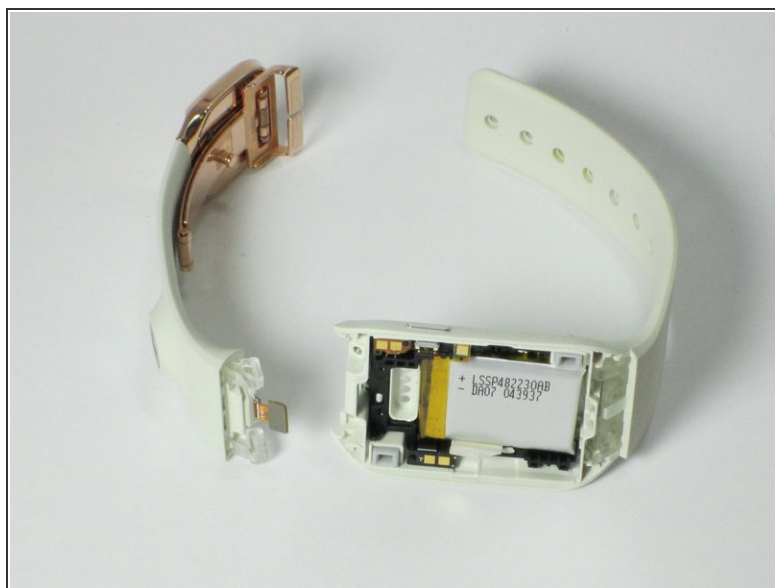
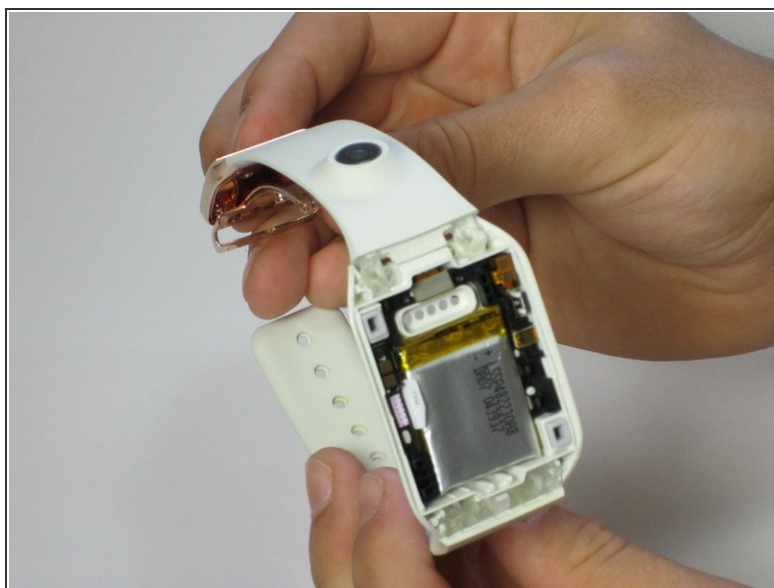
- [Galaxy Gear \(1st Gen\) Camera](#) (1)

Step 1 — Band



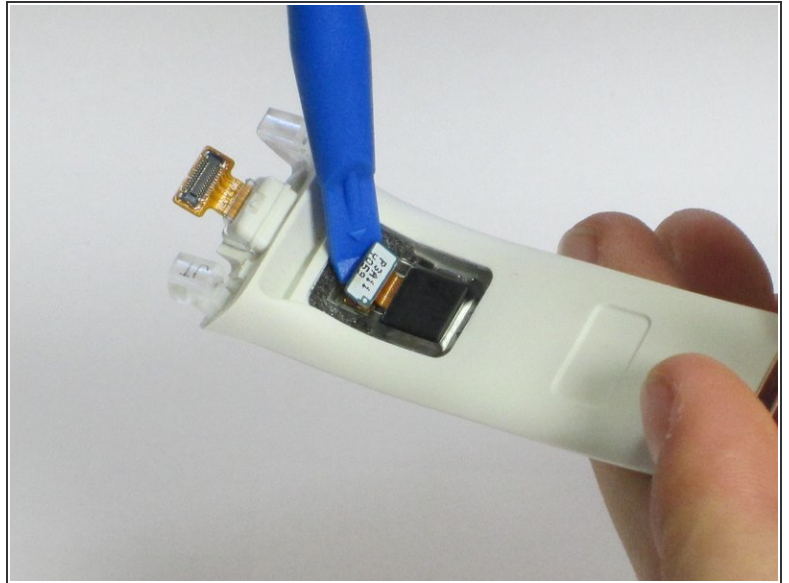
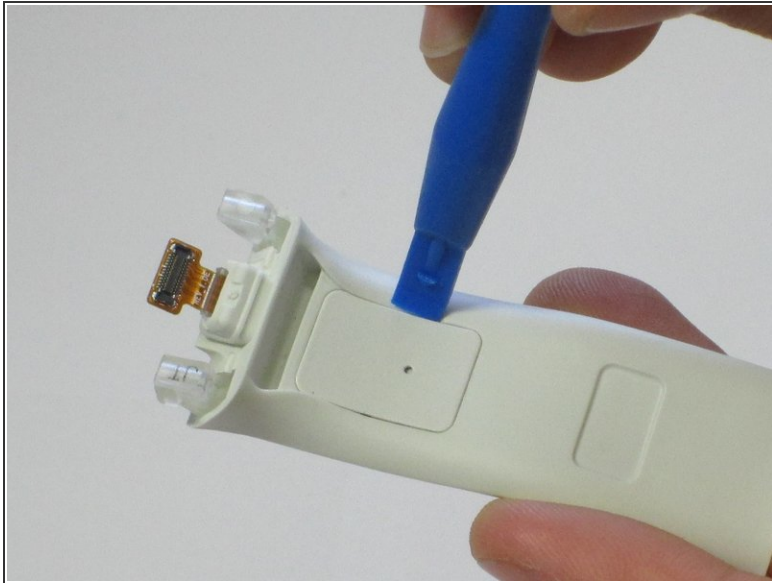
- Loosen the camera ribbon so it will easily pass through the watch body.

Step 2



- Grip the body of the watch and pull the band upward.
- ⓘ Do the same with the adjacent band, but there will be no camera ribbon to pass through the watch body.

Step 3 — Camera



- Use the plastic opening tool to pry the camera backdoor.
- Use the plastic opening tool to pry the tab and pull the camera.

To reassemble your device, follow these instructions in reverse order.