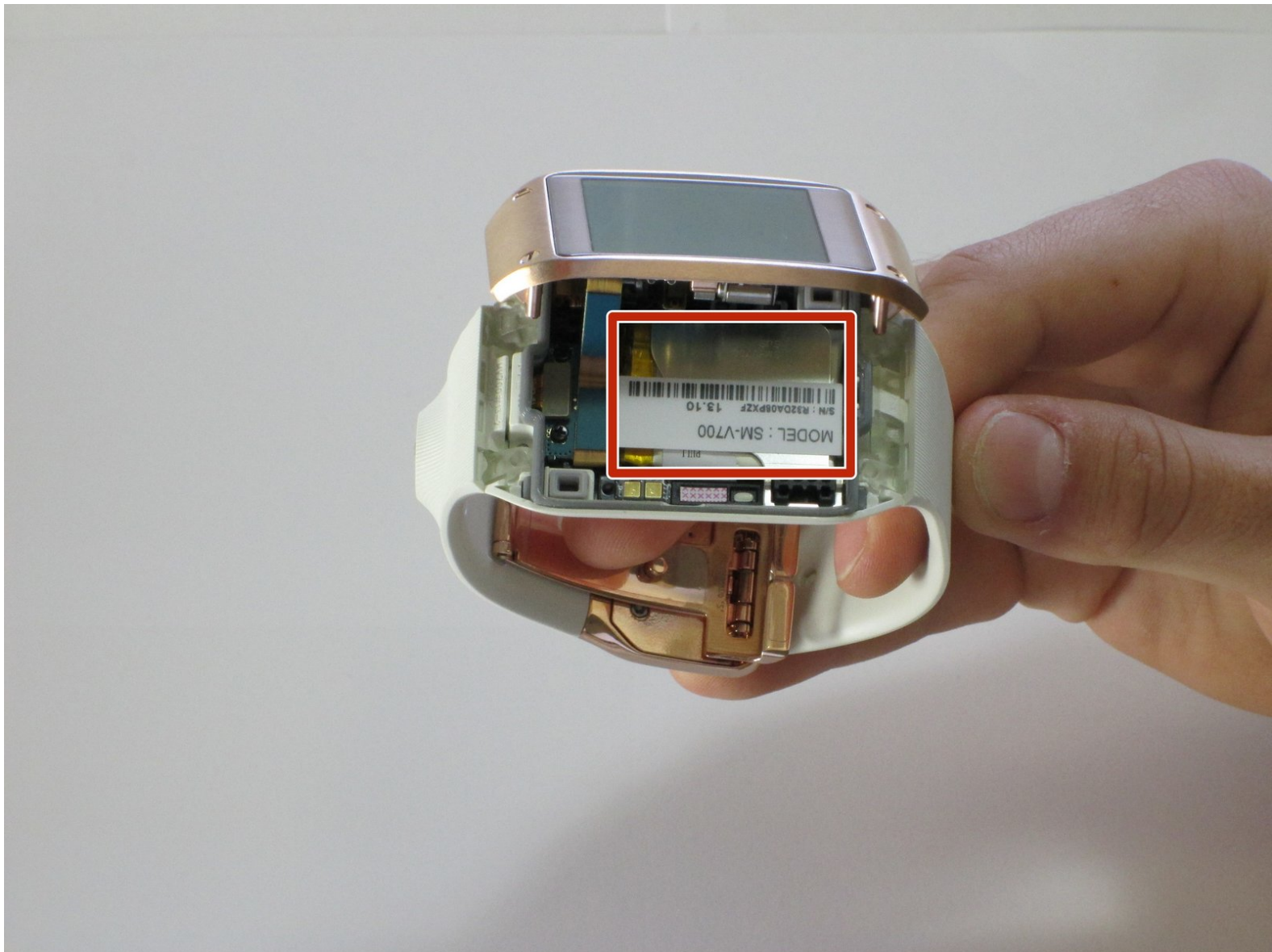




Samsung Galaxy Gear Battery Replacement

Replace the battery of your Samsung Galaxy Gear through this guide.

Written By: Edward Yi



INTRODUCTION

Note: This guide is a continuation off of the display housing removal guide. It is crucial that you follow and complete the prerequisite guide step-by-step.

Use this guide to easily replace a faulty battery or insert a fresh new battery for a longer- lasting, more reliable Samsung Galaxy Gear watch.



TOOLS:

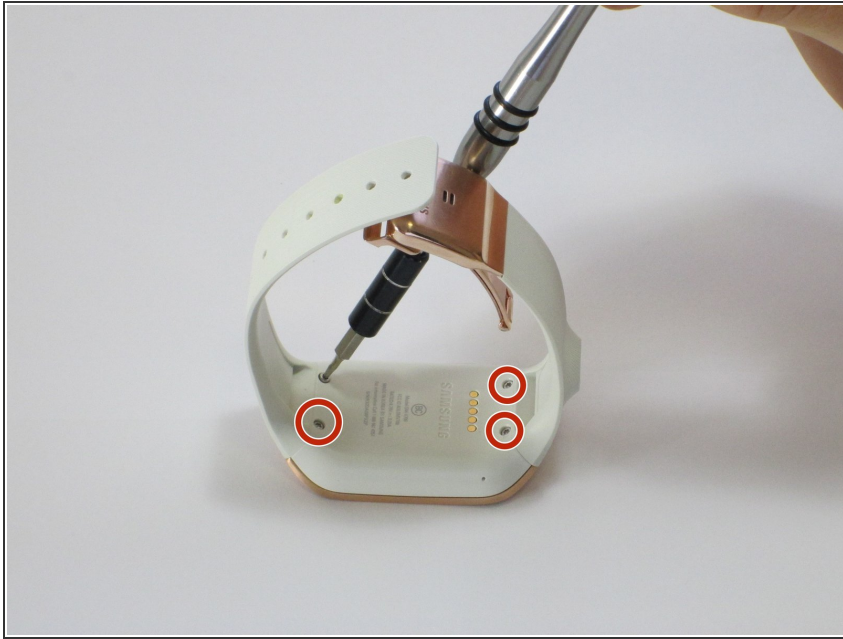
- [T5 Torx Screwdriver](#) (1)
- [iFixit Opening Tools](#) (1)



PARTS:

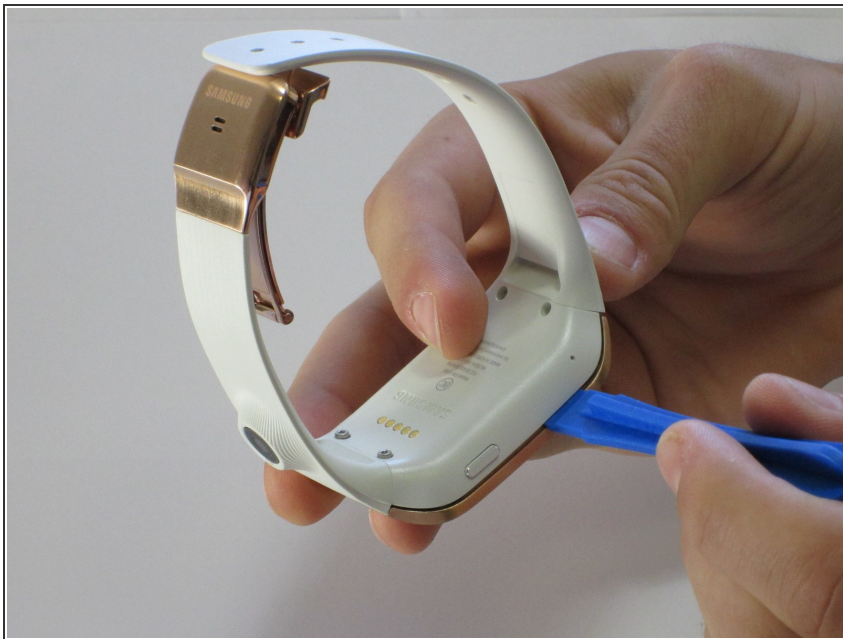
- [Galaxy Gear \(1st Gen\) Replacement Battery](#) (1)

Step 1 — Display Housing



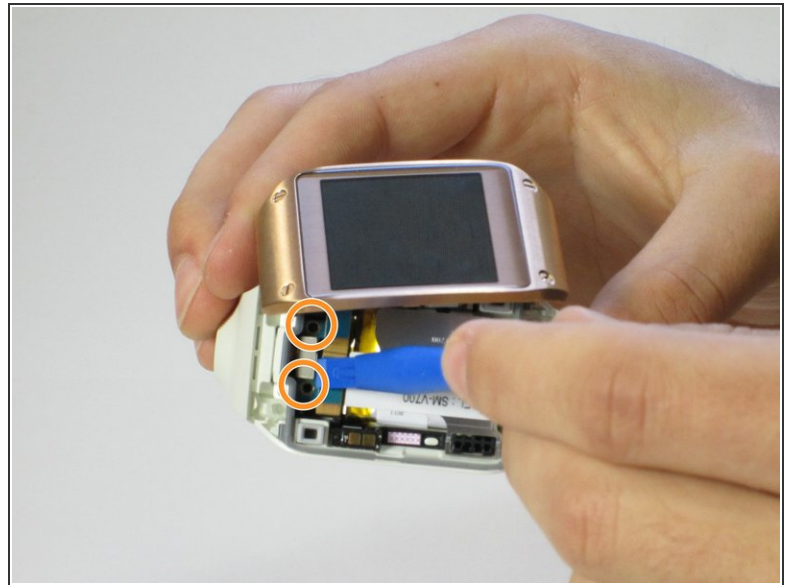
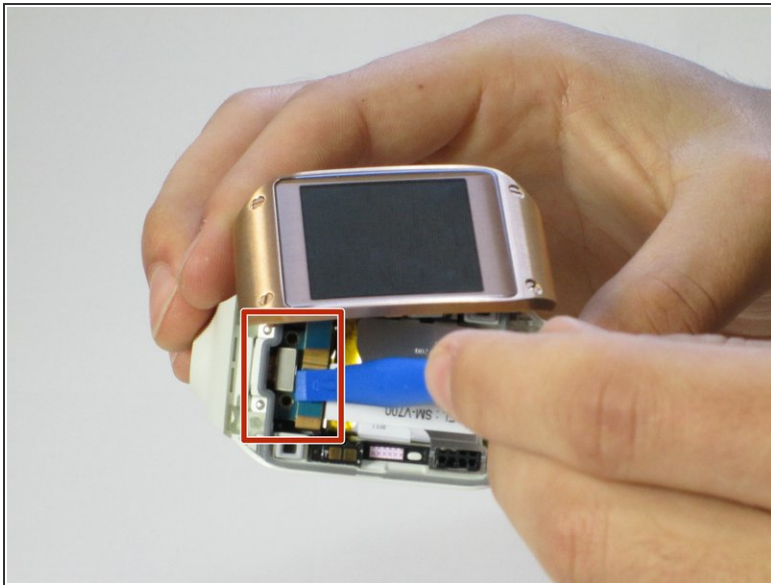
- Use a T5 Torx screwdriver to remove the four 4.0 mm screws on the back of the device.
- ☑ Be sure your device is turned off.

Step 2



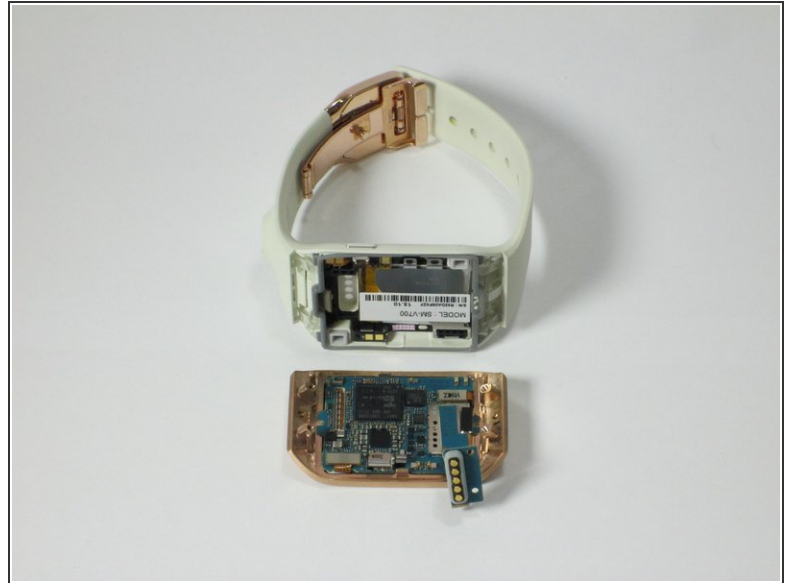
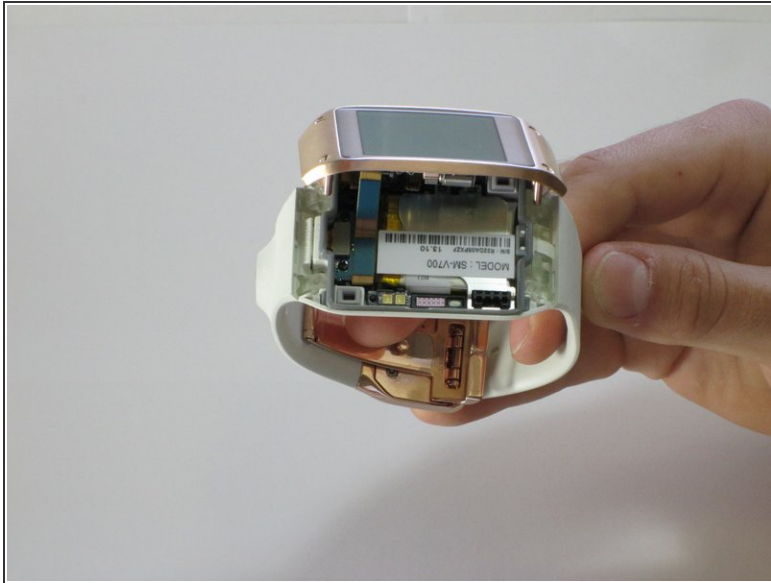
- Use a plastic opening tool to separate the display housing from the device.
- ⓘ To ensure you don't damage your device, insert the opening tool and slide it the entire length of the gap on both sides of the device.

Step 3



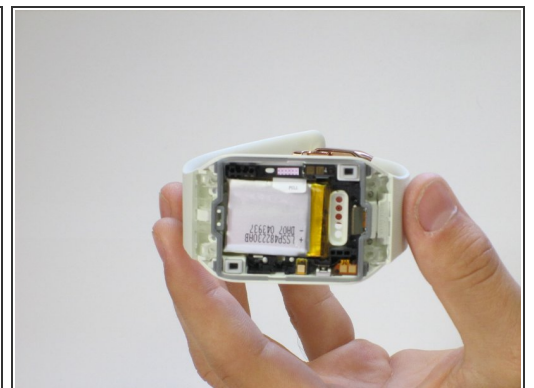
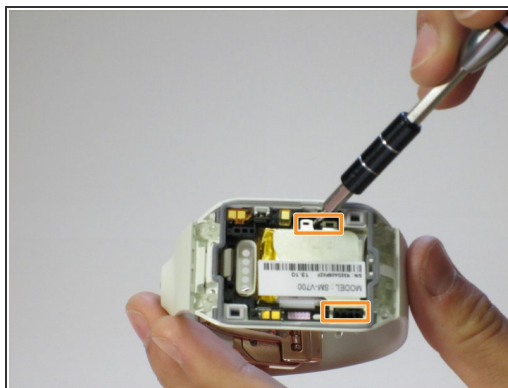
- Gently pry back the metal flap on top of the connector.
- Locate the two 2.0 mm black screws and unscrew using a Phillips PH00 bit. The connector will detach from the device.

Step 4 — Battery



- After separating the LCD/motherboard from the actual watch itself, the watch should be in two separate pieces.
- ⓘ You will only need the watch/strap component so you can set aside the LCD/motherboard component.

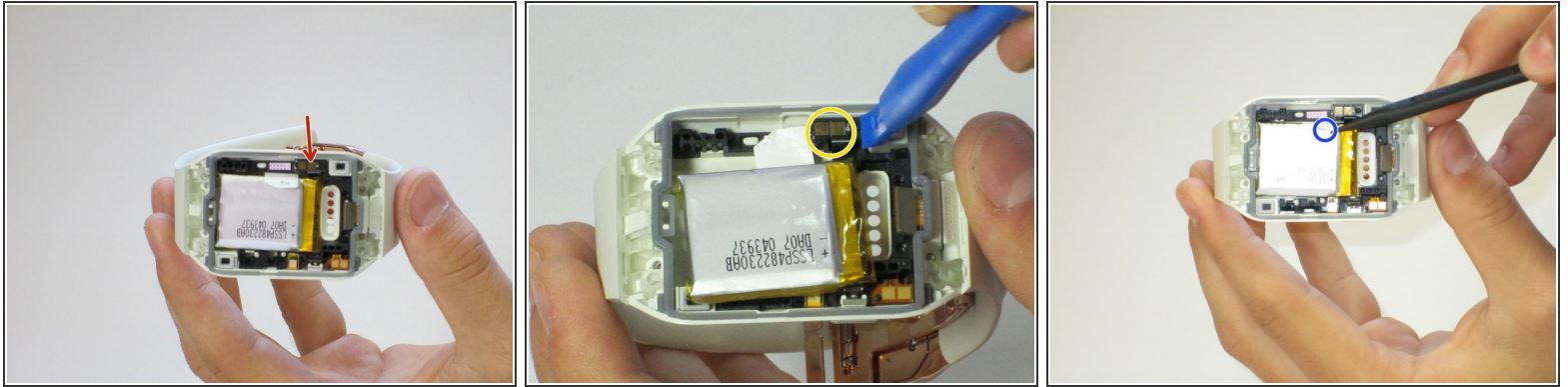
Step 5



- Look for the metal bracket that covers and secures the battery in place.
- Loosen the bracket by prying underneath the metal plating with the plastic opening tool. Remove the bracket and set it to the side.
- The battery should now be exposed.

This document was generated on 2020-04-01 04:24:52 PM (MST).

Step 6



⚠ Notice the leads attached to the base of the watch. You will need to remove this before you pull the battery out.

- Using the plastic opening tool, pry underneath the leads and disconnect it from the back of the watch.
- Slowly tug on the "PULL" tag and remove the battery from the watch.

To reassemble your device, follow these instructions in reverse order.