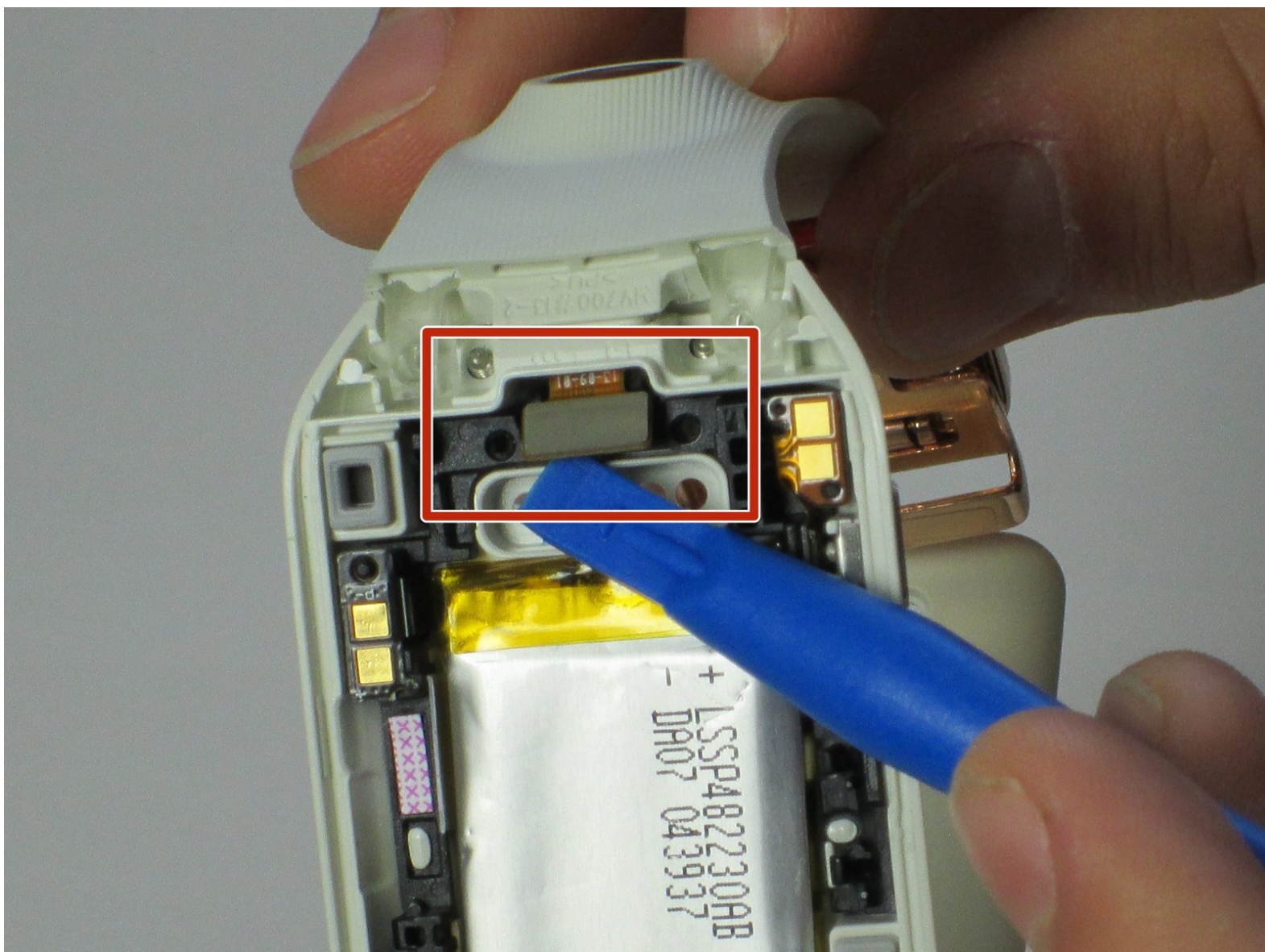




Samsung Galaxy Gear Band Replacement

This guide will demonstrate how to replace the watch band on your device.

Written By: Dalt Lasell



INTRODUCTION

To replace the watch band on your device, you will need to remove the band. This is demonstrated by the following steps. Removing the band also assists in removing the camera from the device.

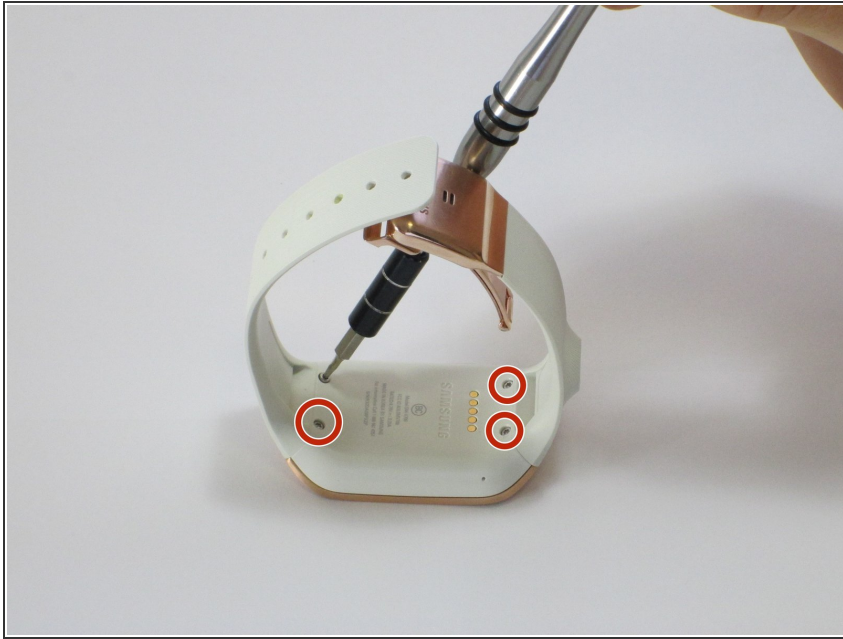
TOOLS:

- [T5 Torx Screwdriver](#) (1)
- [iFixit Opening Tools](#) (1)

PARTS:

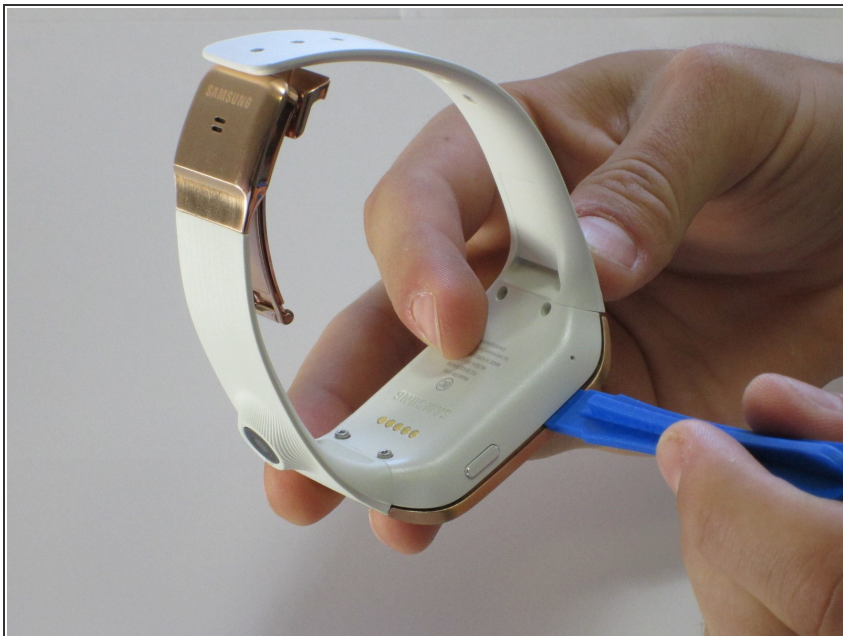
- [Galaxy Gear \(1st Gen\) Top Strap](#) (1)
- [Galaxy Gear \(1st Gen\) Bottom Strap](#) (1)

Step 1 — Display Housing



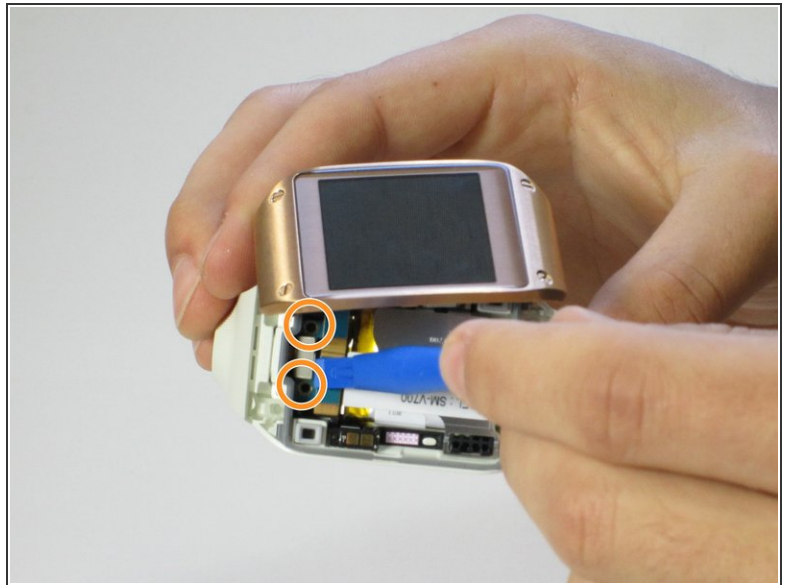
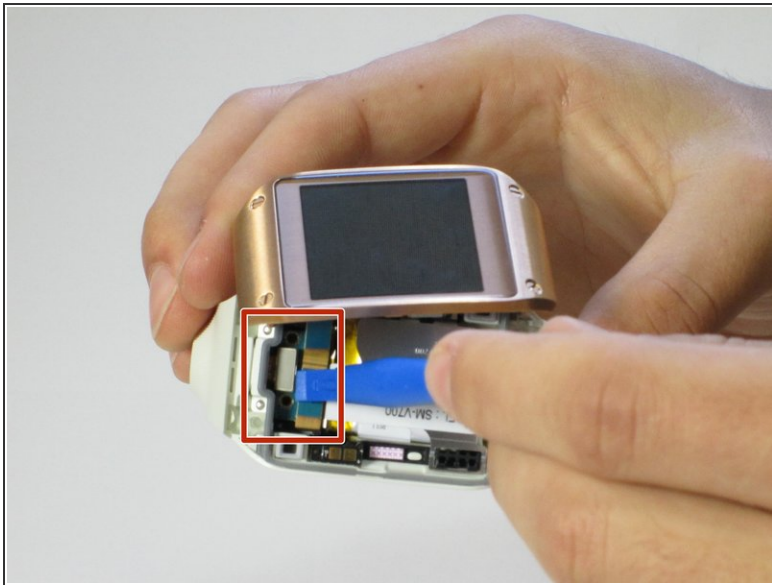
- Use a T5 Torx screwdriver to remove the four 4.0 mm screws on the back of the device.
- ☑ Be sure your device is turned off.

Step 2



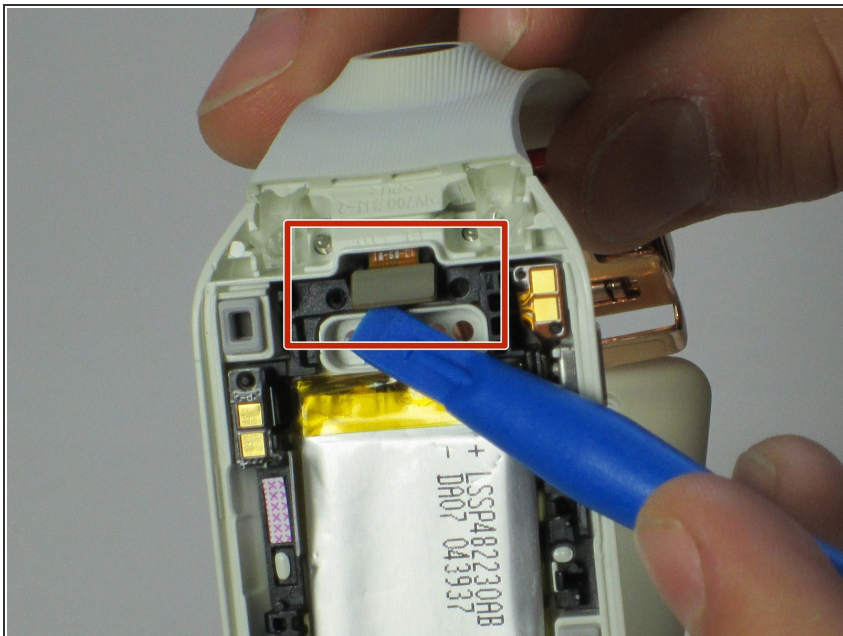
- Use a plastic opening tool to separate the display housing from the device.
- ⓘ To ensure you don't damage your device, insert the opening tool and slide it the entire length of the gap on both sides of the device.

Step 3



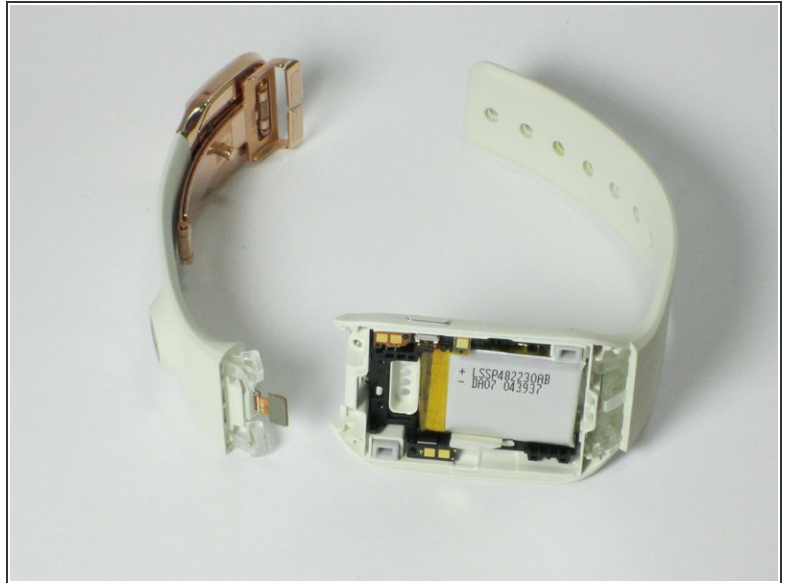
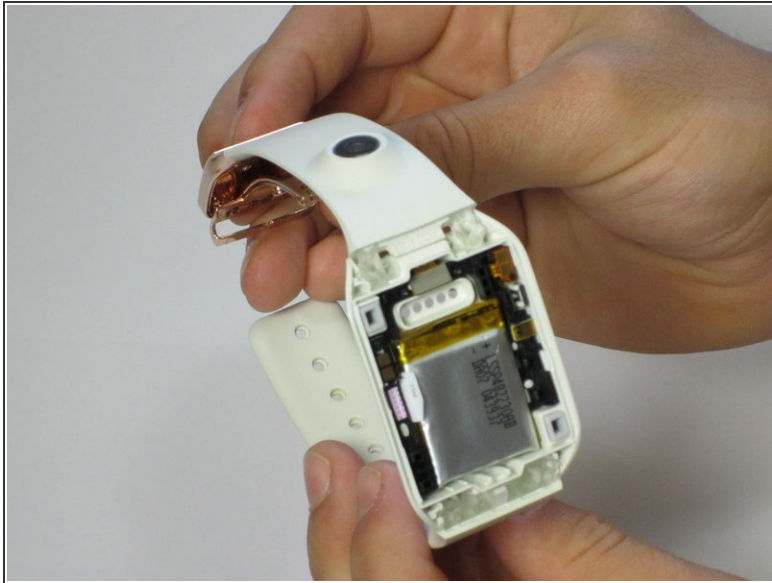
- Gently pry back the metal flap on top of the connector.
- Locate the two 2.0 mm black screws and unscrew using a Phillips PH00 bit. The connector will detach from the device.

Step 4 — Band



- Loosen the camera ribbon so it will easily pass through the watch body.

Step 5



- Grip the body of the watch and pull the band upward.
- ⓘ Do the same with the adjacent band, but there will be no camera ribbon to pass through the watch body.

To reassemble your device, follow these instructions in reverse order.