



# Garmin Nuvi 2557LMT Battery Replacement

This guide will show how to replace the battery in your Garmin Nuvi 2557LMT.

Written By: Danis Terzi



---

## INTRODUCTION

The tools needed are a T5 Torx screwdriver and a plastic opening tool. The battery is glued to the back of the device and connected to the motherboard with a wire.

---

### TOOLS:

- [T5 Torx Screwdriver](#) (1)
  - [iFixit Opening Tools](#) (1)
-

## Step 1 — Garmin Nuvi 2557LMT Disassembly



- Using a T5 Torx screwdriver, remove four 6 mm screws from the four corners of the back of the device.

## Step 2



- Grip the device with your hands. Using your thumbs pull the nameplate towards yourself and off the device.

### Step 3



- ⓘ There is a visible separation between the front and the back of the device.
- Using a plastic opening tool, pry open the device along this separation.
- ⚠ Trying to open the device on the opposite side will rip the motherboard-display connector.

### Step 4



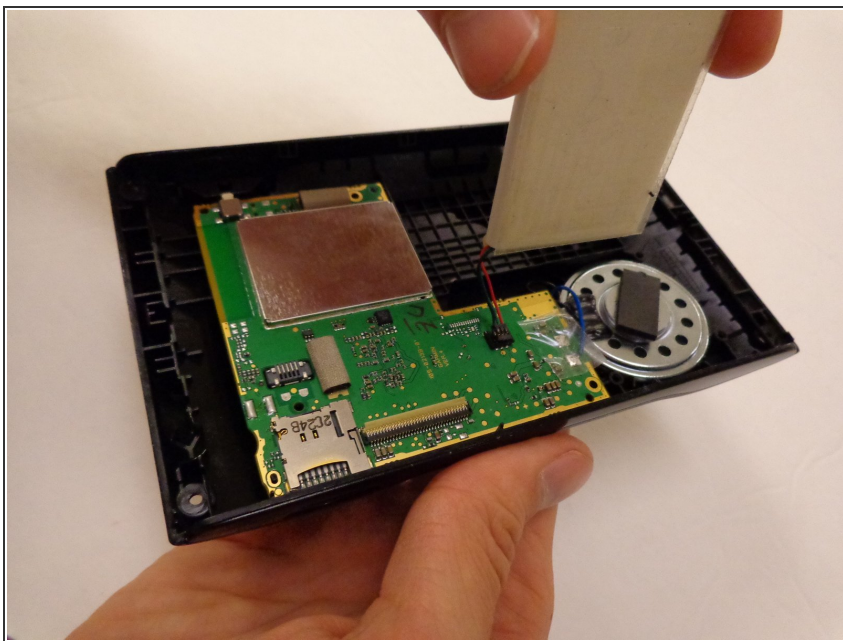
- Carefully pull apart the device by opening it up on the opposite side of the nameplate.

## Step 5 — Battery



- Using a plastic opening tool pry the battery away from the device.
- ⓘ The battery might be glued, so it might require a little bit of force to get it out.

## Step 6



- Pull the battery-motherboard connector away from the motherboard.

To reassemble your device, follow these instructions in reverse order.