



Bose SoundLink Color Button Pad Replacement

This guide will explain how to replace the top, rubber button pad.

Written By: Michael Thorn



INTRODUCTION

When one or all of the buttons stop working on a device, it can be a frightening thing. Use this guide to help.

TOOLS:

- [Phillips #0 Screwdriver](#) (1)
- [Metal Spudger](#) (1)
- [Tamper Resistant TORX Plus TR Bit](#) (1)
- [iFixit Pro Tech Toolkit](#) (1)

PARTS:

- [Rubber Cement](#) (1)

Step 1 — Outer Casing



i Four round, plastic plugs are located on the back of the device.

- Using a metal spudger, carefully pry up the plastic covers.

! The covers are all glued on, so be careful not to scar the casing when prying them off. If possible, use a spudger or plastic opening tool to remove them.

Step 2



- Remove the four 1.8 cm Torx Plus TR screws from the outer case.

This document was generated on 2019-09-26 03:02:27 AM (MST).

Step 3



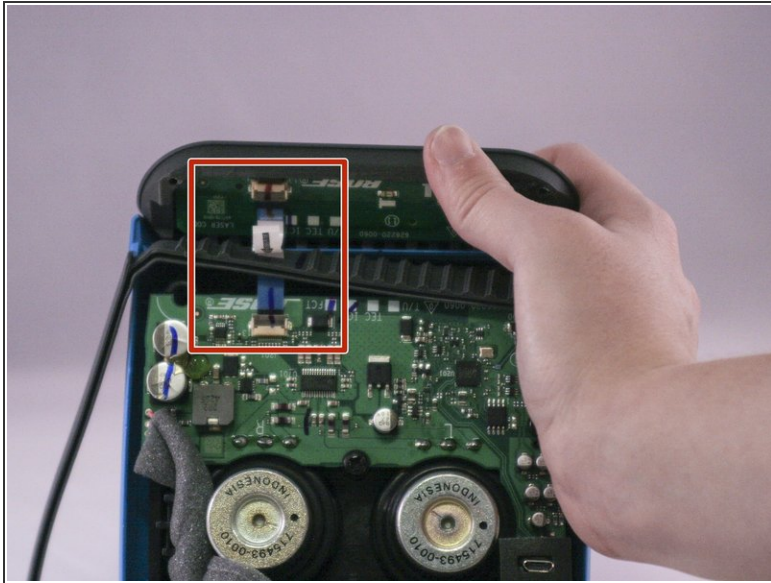
- Carefully open up the casing.
- ☑ The top button pad may need to be re-glued upon installing the new casing.

Step 4 — Button Pad



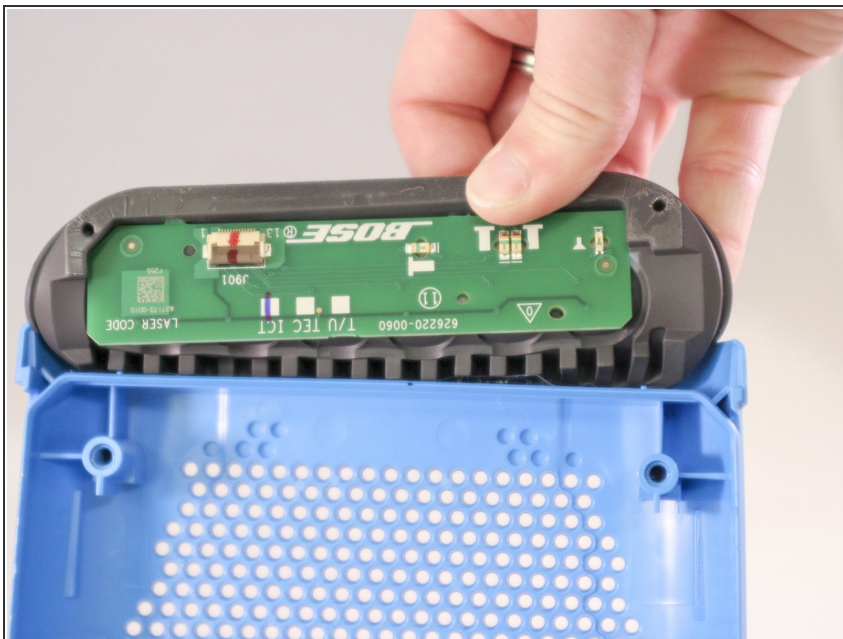
- Lift up the retaining flap on the button cable ZIF connector.
- Pull the button cable straight out of the connector.

Step 5



- Carefully pull the ribbon cable through the rubber gasket that runs around the device.

Step 6



- To remove the old rubber button pad, carefully peel it off of the blue casing.

To reassemble your device, follow these instructions in reverse order, starting from Step 6.