



MacBook Air 13" Mid 2011 Battery Connector

Internal Prerequisite. Disconnecting the battery.

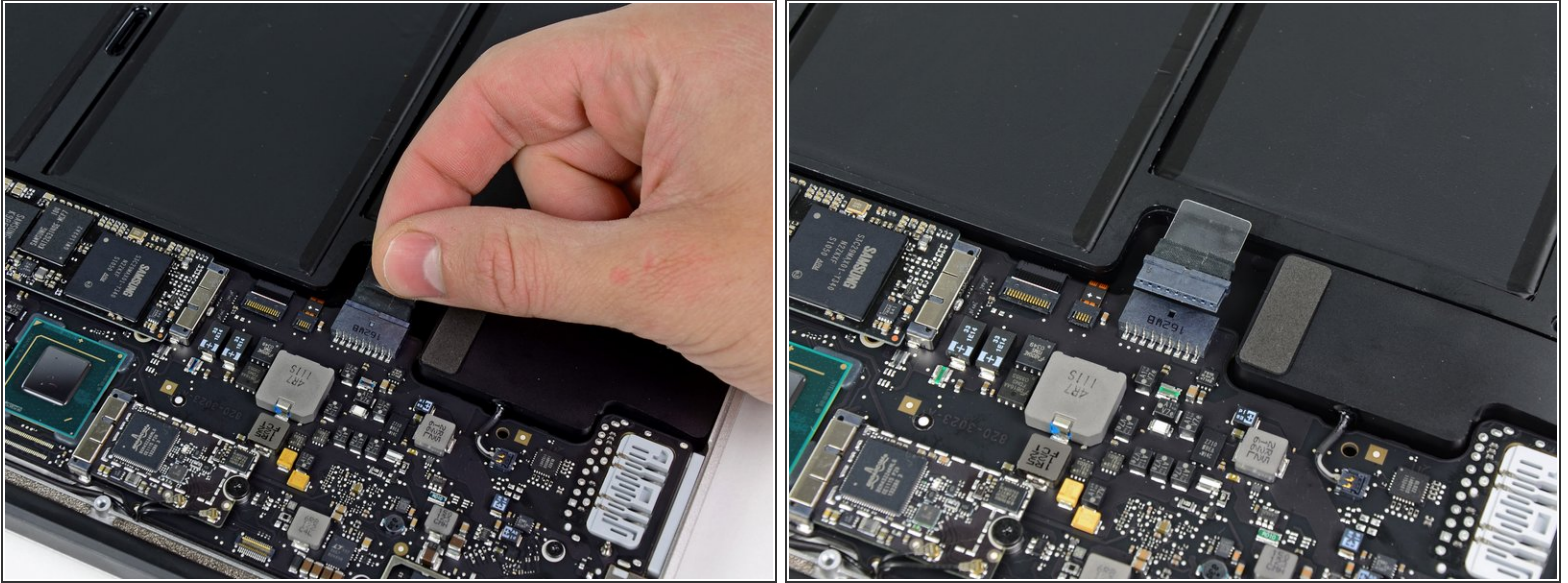
Written By: Andrew Bookholt



INTRODUCTION

Internal Prerequisite. Disconnecting the battery.

Step 1 — Battery Connector



- i** As a precaution against accidental discharge or shock, disconnect the battery connector from the logic board.
- Grab the clear plastic pull tab attached to the battery connector and pull it toward the front edge of the Air to disconnect the battery from the logic board.
- !** Be sure to pull the connector horizontally toward the battery, and not straight up from the Air, or you may damage the socket on the logic board.