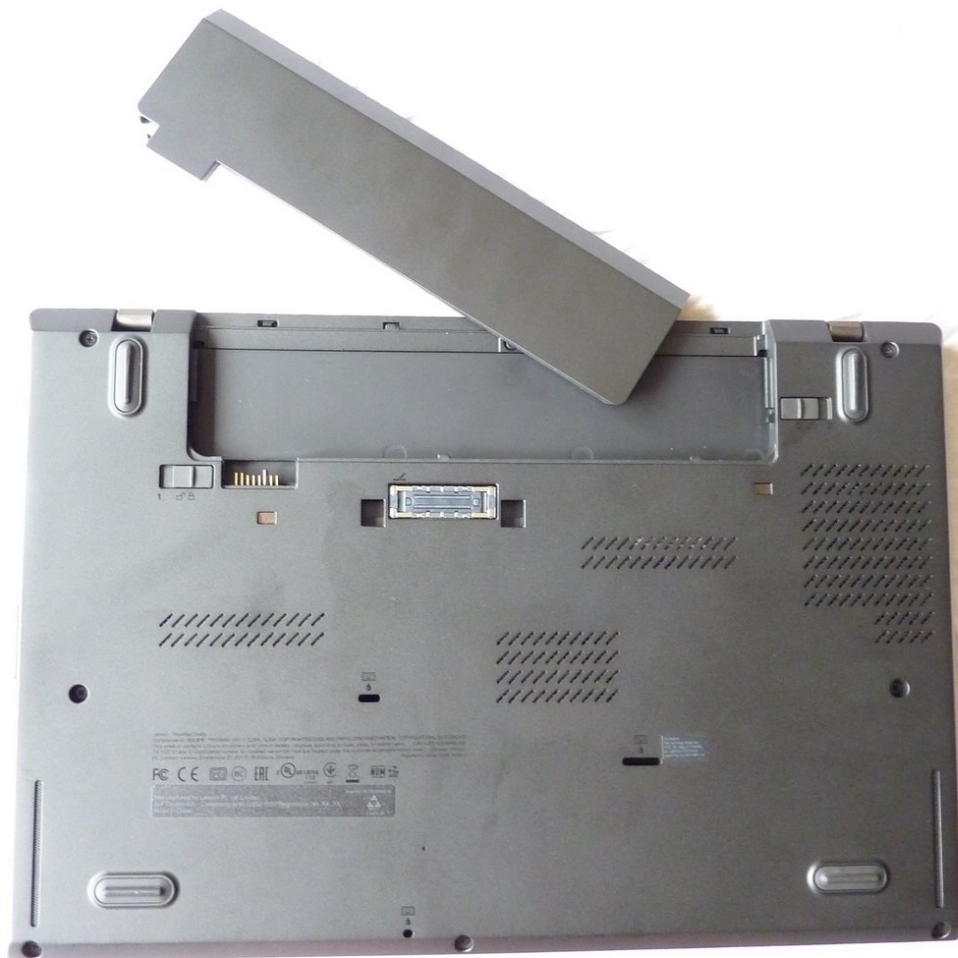




Lenovo Thinkpad T440s Display (Full-HD, no touch) Replacement

Replacement of display in Full-HD (1920x1080) and no touch capability.

Written By: Markus Schmidt



INTRODUCTION

The possible screens for this model of the T440s are the

- AUO display B140HAN01.2 (FRU: 04X0436)
- LG display LP140WF1 (sp)(k1) (FRU: 04X0626)

I had a AUO installed and replaced, so no judgement on the quality of the LG display, which can be followed in various Thinkpad forums.

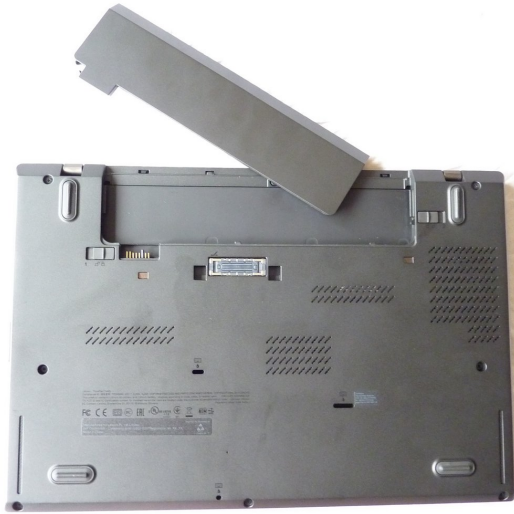
TOOLS:

- [iFixit Opening Tools](#) (1)
- [paper cutter](#) (1)
- [Tweezers](#) (1)
- [Phillips #000 Screwdriver](#) (1)

PARTS:

- [LG display LP140WF1 \(sp\)\(k1\)](#) (FRU: 04X0626) (1)
- [AUO display B140HAN01.2](#) (FRU: 04X0436) (1)

Step 1 — Set to Maintenance Mode



- While booting, press the *F1* button to enter the BIOS.
- Go to "Config" and then to "Power".
- Select "Disable Built-in Battery" and press *Enter*.
- You will be asked to proceed. Select "Yes".
- The laptop shuts down. Unplug the laptop from AC.
- Remove the battery.

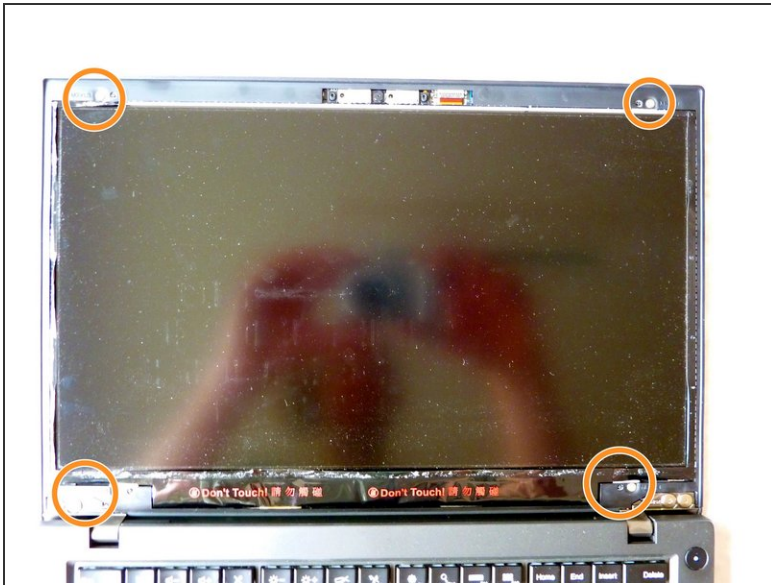
Step 2 — Remove Front Bezel



- Start removing the front bezel in the lower display corners using a prying tool.

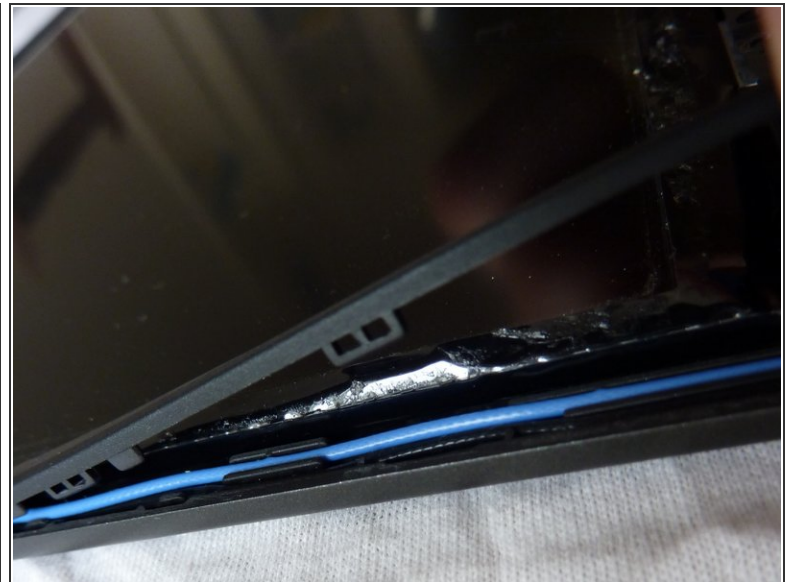
! Make sure the glue and tape will stick to the front bezel instead of the display and rear bezel. You can use a gripping tool and a cutter for this.

Step 3 — Remove Screws



- Remove 4 screws **M2XL3** with screwdriver.

Step 4 — Remove Rear Bezel



- Remove the rear bezel with the prying tool.

⚠ Make shure you do not move or damage the blue and black cable behind the bezel.

Step 5 — Release Display



- Carefully release the display, turn it around and place it on the keyboard.

⚠ Ensure to not damage the connector on the lower part of the display.

Step 6 — Release the Connector



- Remove the connector together with the label.

To reassemble your device, follow these instructions in reverse order.