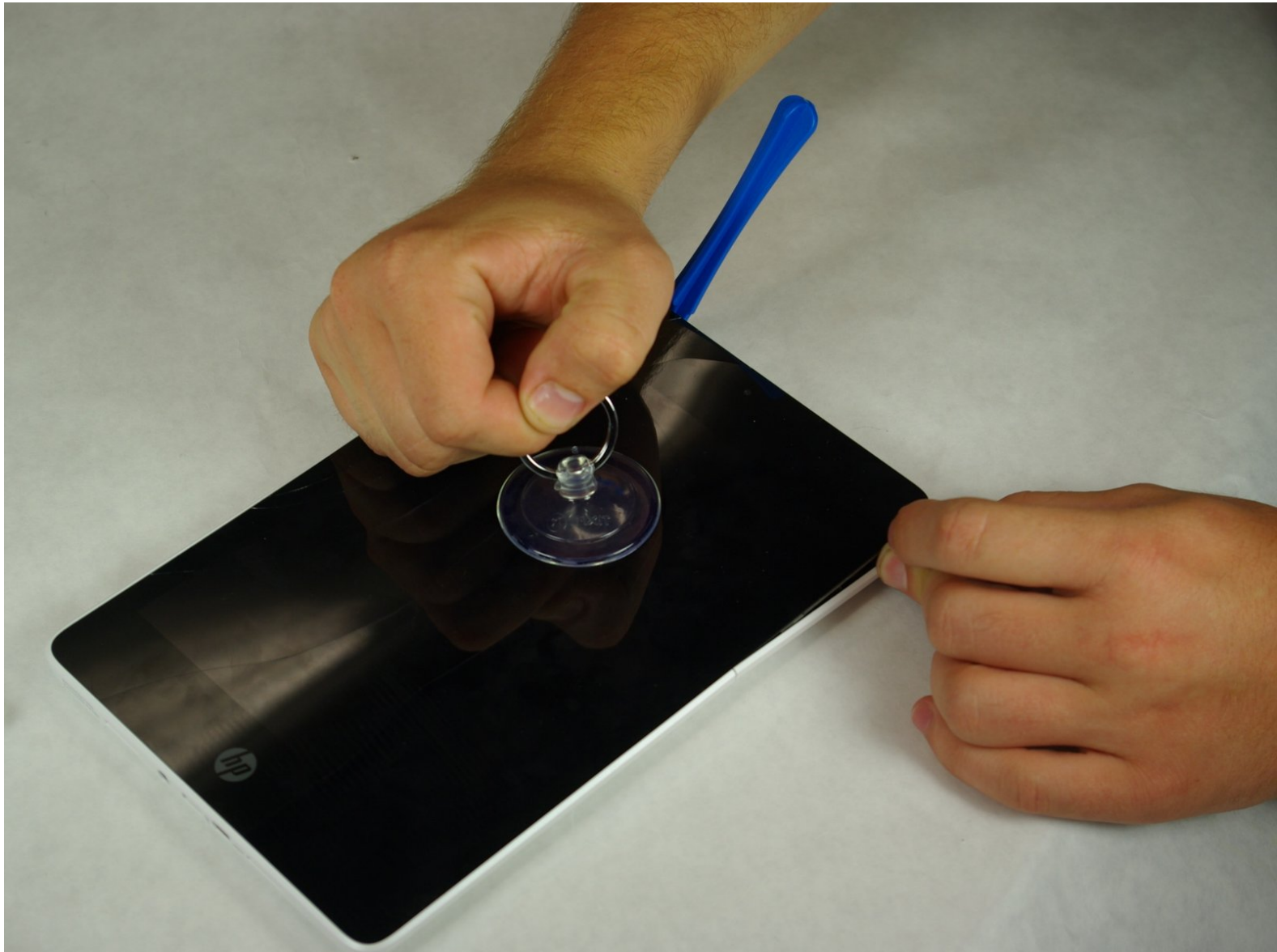




# HP Slate 8 Pro Rear Facing Camera Replacement

A guide to show the procedure for the replacement of the rear facing camera.

Written By: Andrew Hall



---

## INTRODUCTION

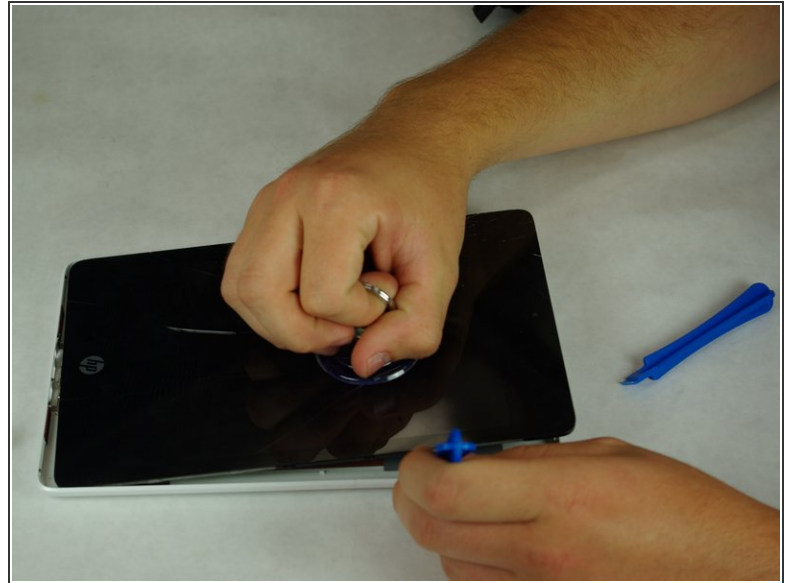
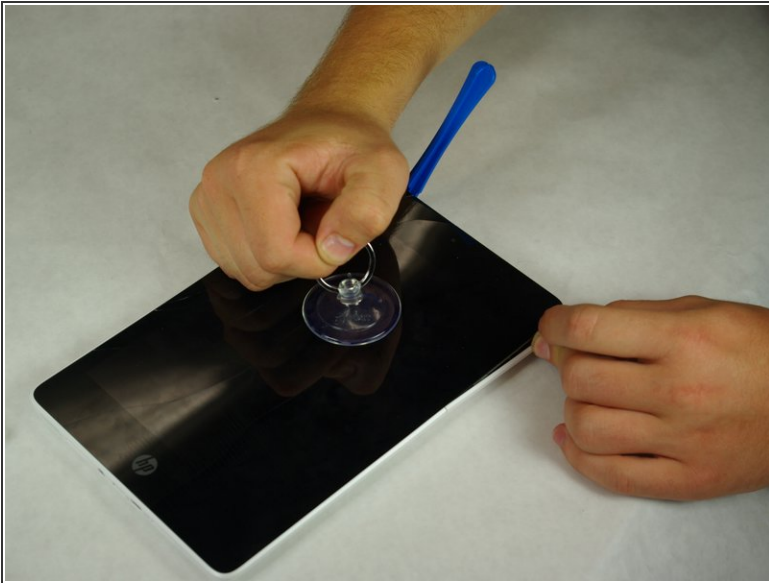
This guide will show you how to pry open the screen and replace the Rear Facing Camera.

---

### TOOLS:

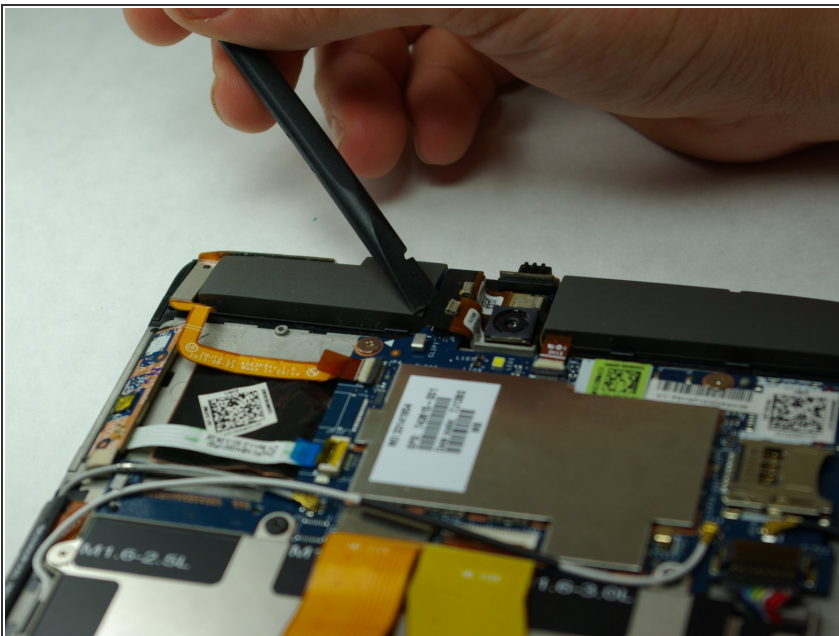
- [iFixit Opening Tools](#) (1)
  - [Spudger](#) (1)
  - [Tweezers](#) (1)
-

## Step 1 — Rear Facing Camera



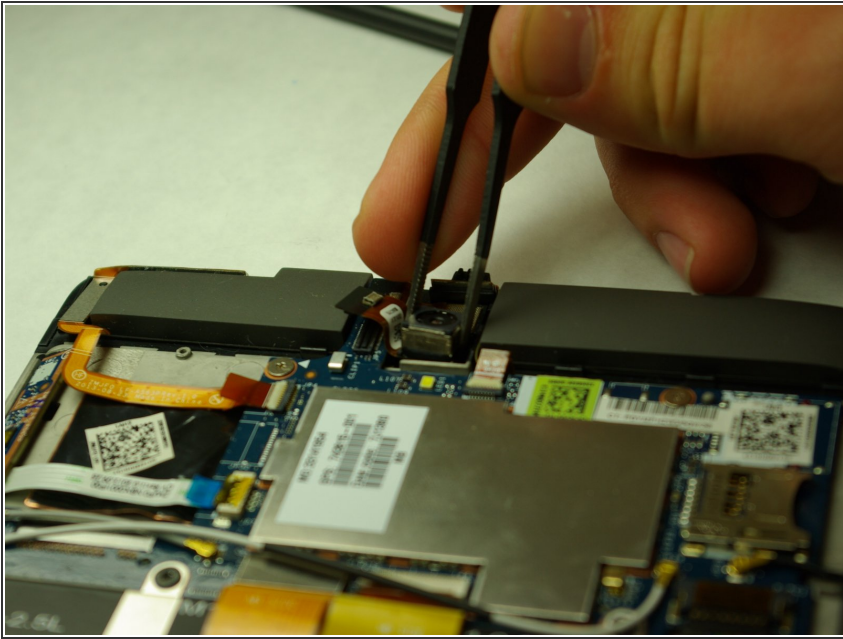
- Secure the suction cup to the center of the screen.
- Using a plastic opening tool, pry along the edges of the display while pulling upwards with the suction cup.

## Step 2



- Use the Spudger to disconnect the ribbon cable to the rear facing camera.

## Step 3



- Use the tweezers to pry the camera assembly away from the motherboard.

To reassemble your device, follow these instructions in reverse order.

This document was last generated on 2019-07-10 07:27:04 PM.