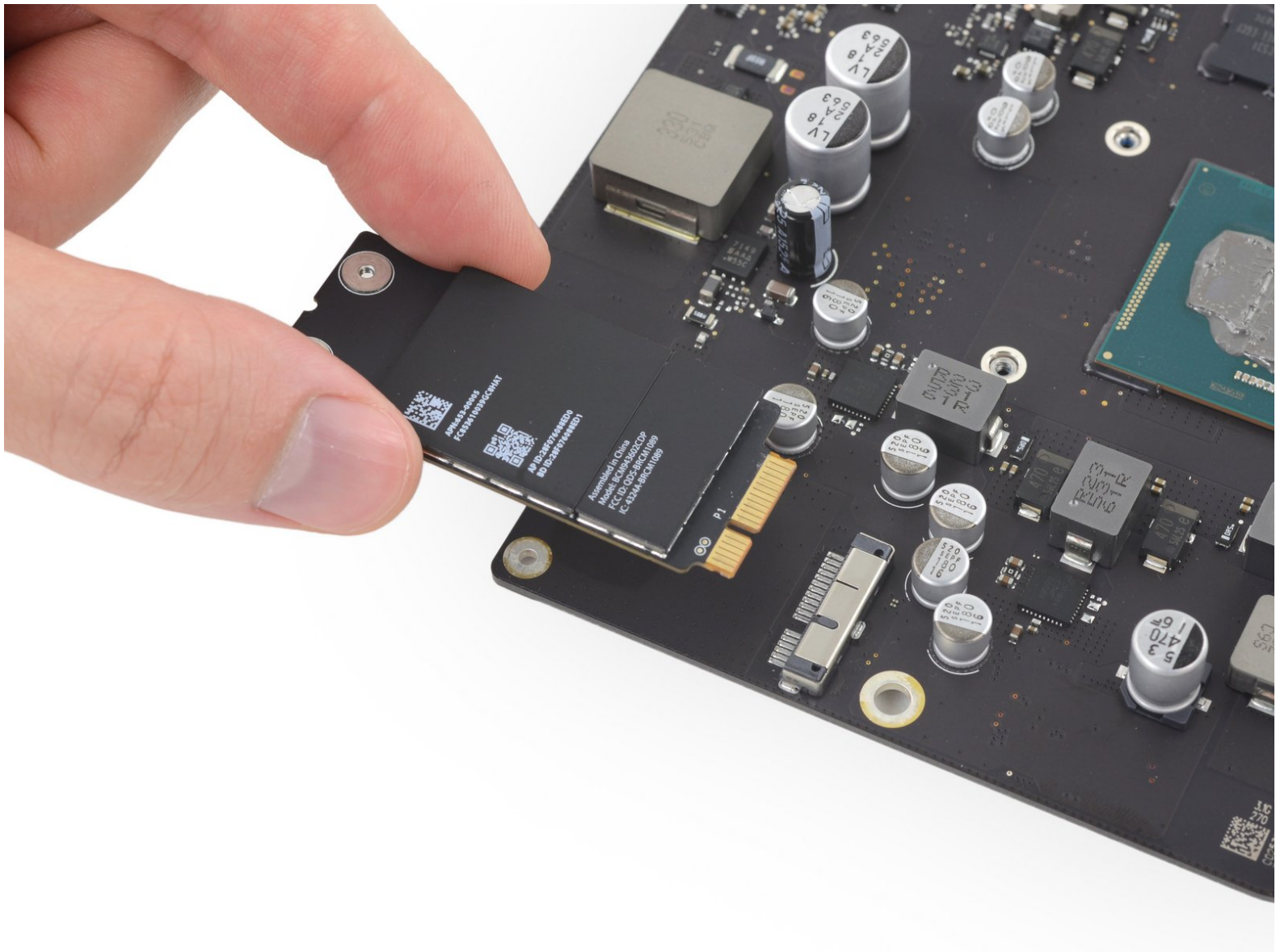




iMac Intel 21.5" Retina 4K Display AirPort/Bluetooth Card Replacement

Prereq for removing the AirPort card from the logic board.

Written By: Evan Noronha



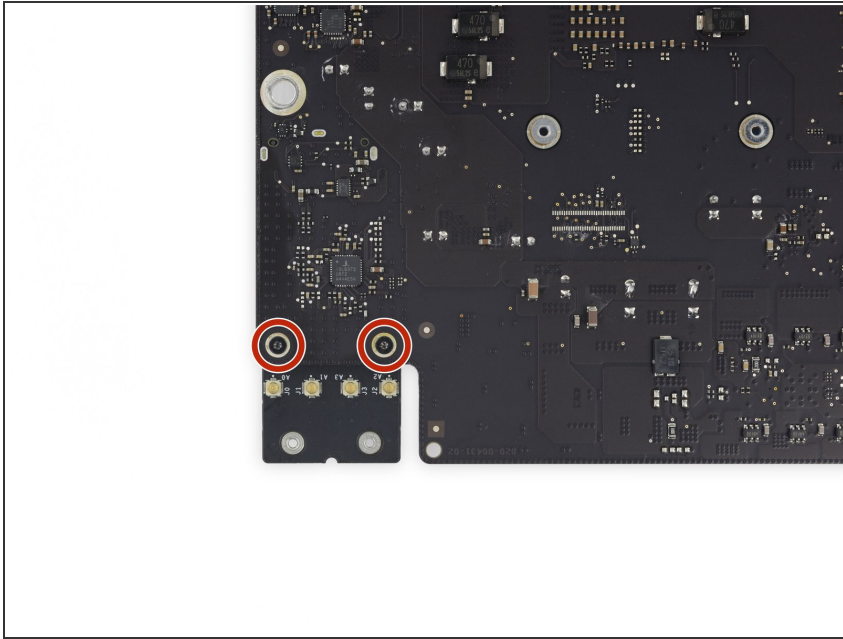
INTRODUCTION

Prereq only for removing the AirPort/Bluetooth card from the logic board.

TOOLS:

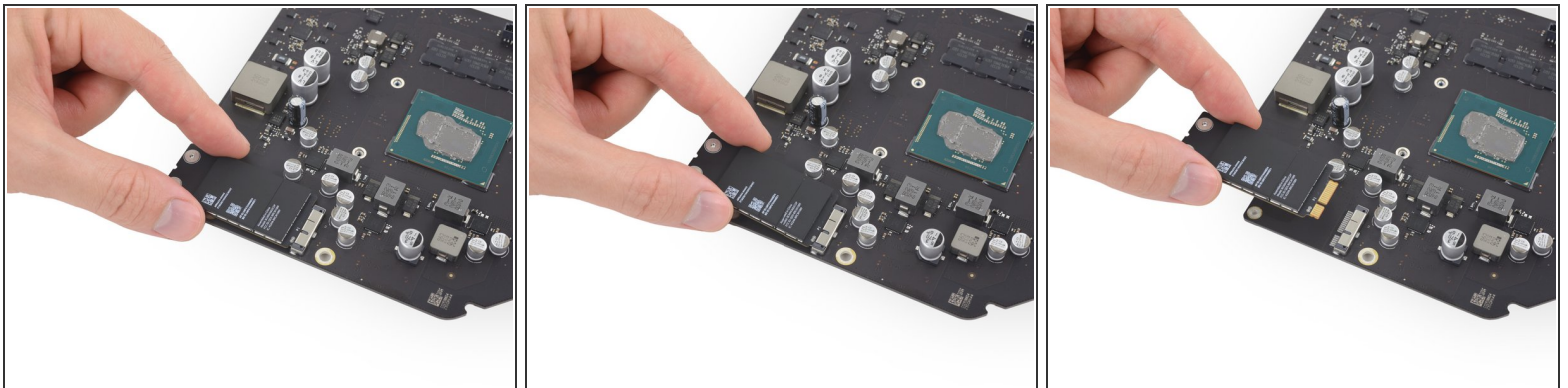
- [T5 Torx Screwdriver](#) (1)
-

Step 1 — AirPort/Bluetooth Card



- Remove the two 3.3 mm T5 Torx screws securing the AirPort/Bluetooth card to the logic board.

Step 2



- Slightly lift the AirPort/Bluetooth card and pull it straight out its socket.
- ⚠ Do not use excessive force to pull the end of the AirPort/Bluetooth card away from its socket on the logic board. Doing so may damage the socket.
- ☑ When reinstalling the card, be sure it is properly seated before reinstalling the retaining screws.
- ⓘ If the AirPort/Bluetooth card is properly seated, its screw holes should align with those on the logic board.

To reassemble your device, follow these instructions in reverse order.