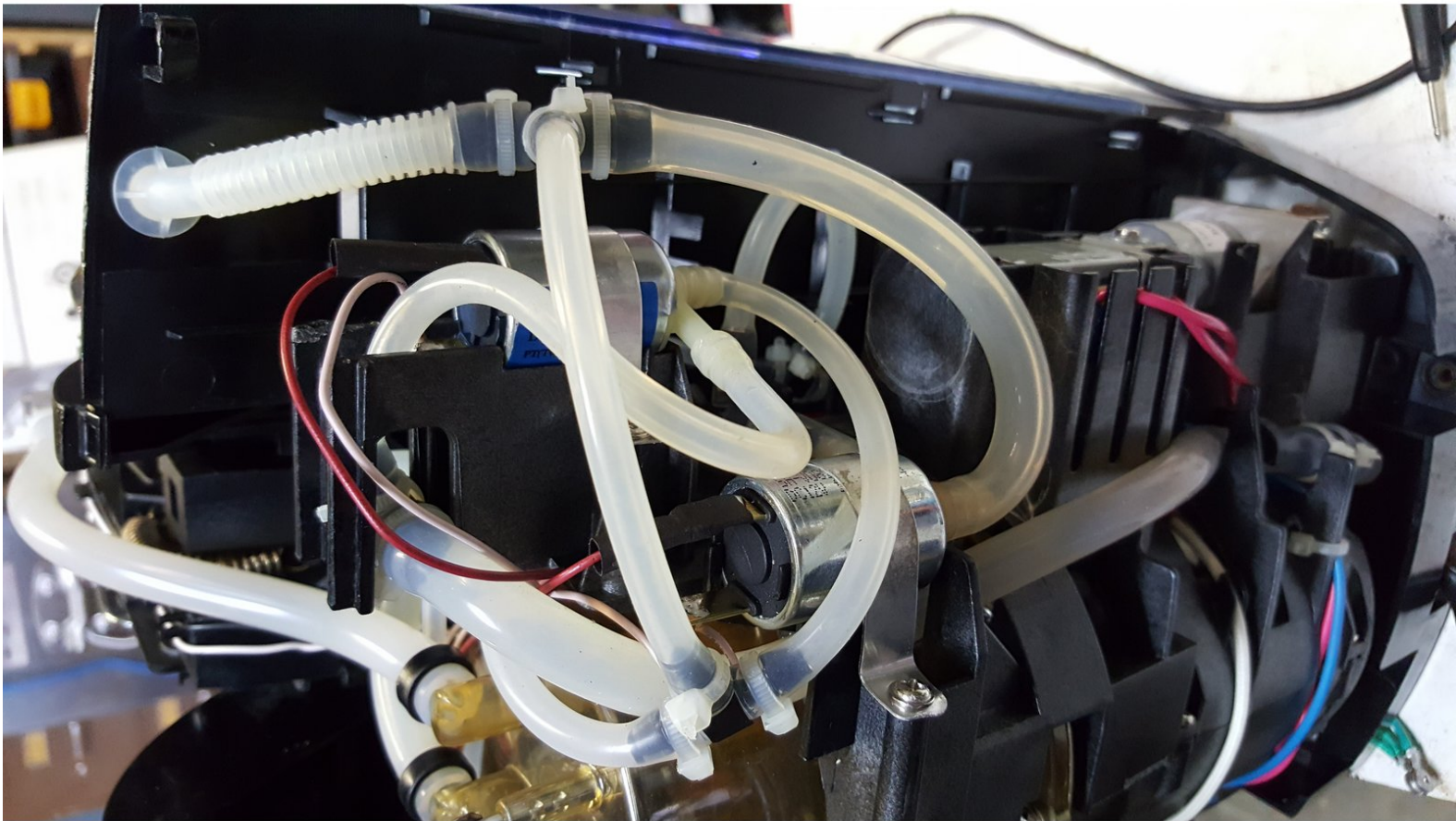




Keurig B70 Platinum Solenoid and driving transistor Replacement

Help solving water leaks and partial cup fills.

Written By: Larry Hines



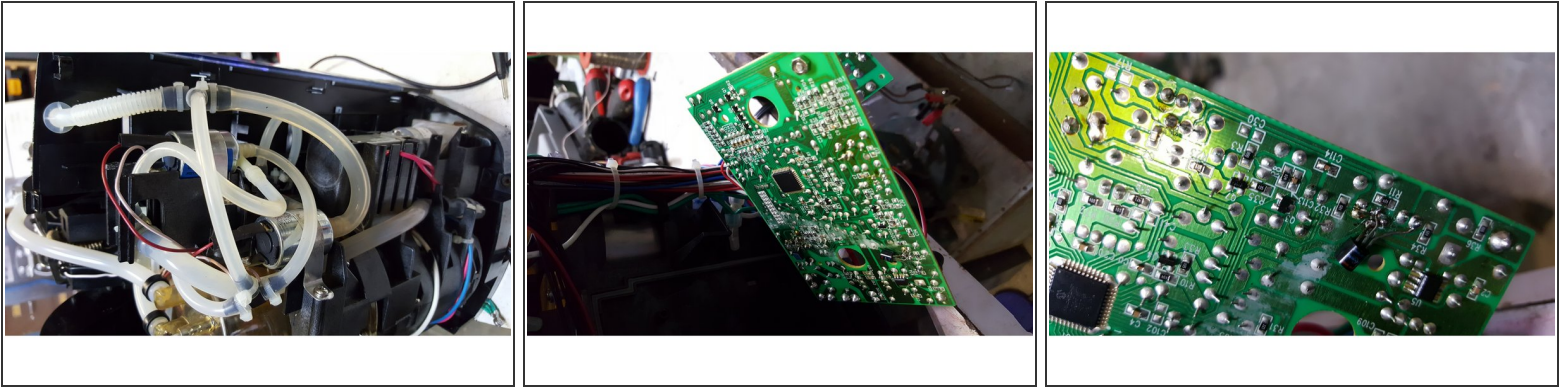
INTRODUCTION

The Keurig B70 coffee maker eventually leaks or doesn't make a full cup of coffee. This usually calls for replacement of some internal parts. You will need instructions for opening the coffee maker, a soldering iron, solder, a voltmeter, small tie-wraps, a Philips screwdriver, a flat bar approximately 12 x 0.5 x 0.1 inches, a needle nose pliers, and replacement parts.

TOOLS:

- [Soldering Iron](#) (1)
 - [Solder](#) (1)
 - [Multimeter](#) (1)
 - [Zip Ties](#) (1)
 - [Essential Electronics Toolkit](#) (1)
 - [Large Needle Nose Pliers](#) (1)
-

Step 1 — Solenoid and driving transistor



- Keurig B70 will not make a full cup
- After descaling and other cleaning methods are tried without success, a more technical approach is required.
- The problem is generally accompanied with water flowing back into the reservoir during the brewing cycle.
- The coffeemaker will need to be opened to access the solenoids and the circuit card. Instructions can be found in other postings. NOTE: Opening the brewer is not easy.
- Check the appearance of each solenoid, looking for discolored (brown) plastic or leaking. Check the solenoids by removing the hoses and applying 12 volts Solenoid is open letting air or liquid to pass when voltage is applied and closed otherwise.
- Replace faulty solenoid(s), and attempt a brew cycle.
- If there is still a problem, it is likely the solenoid driving transistor has failed. See accompanying photos and replace transistor with an NPN such as a 2n222A.
- Recheck operation to verify the fix and reassemble the coffee maker.

Step 2



- Opening the Keurig B70.
- ⓘ Opening the brewer is not easy. A good procedure [can be found here](#), courtesy of the Single Serve Coffee forums

To reassemble your device, follow these instructions in reverse order.