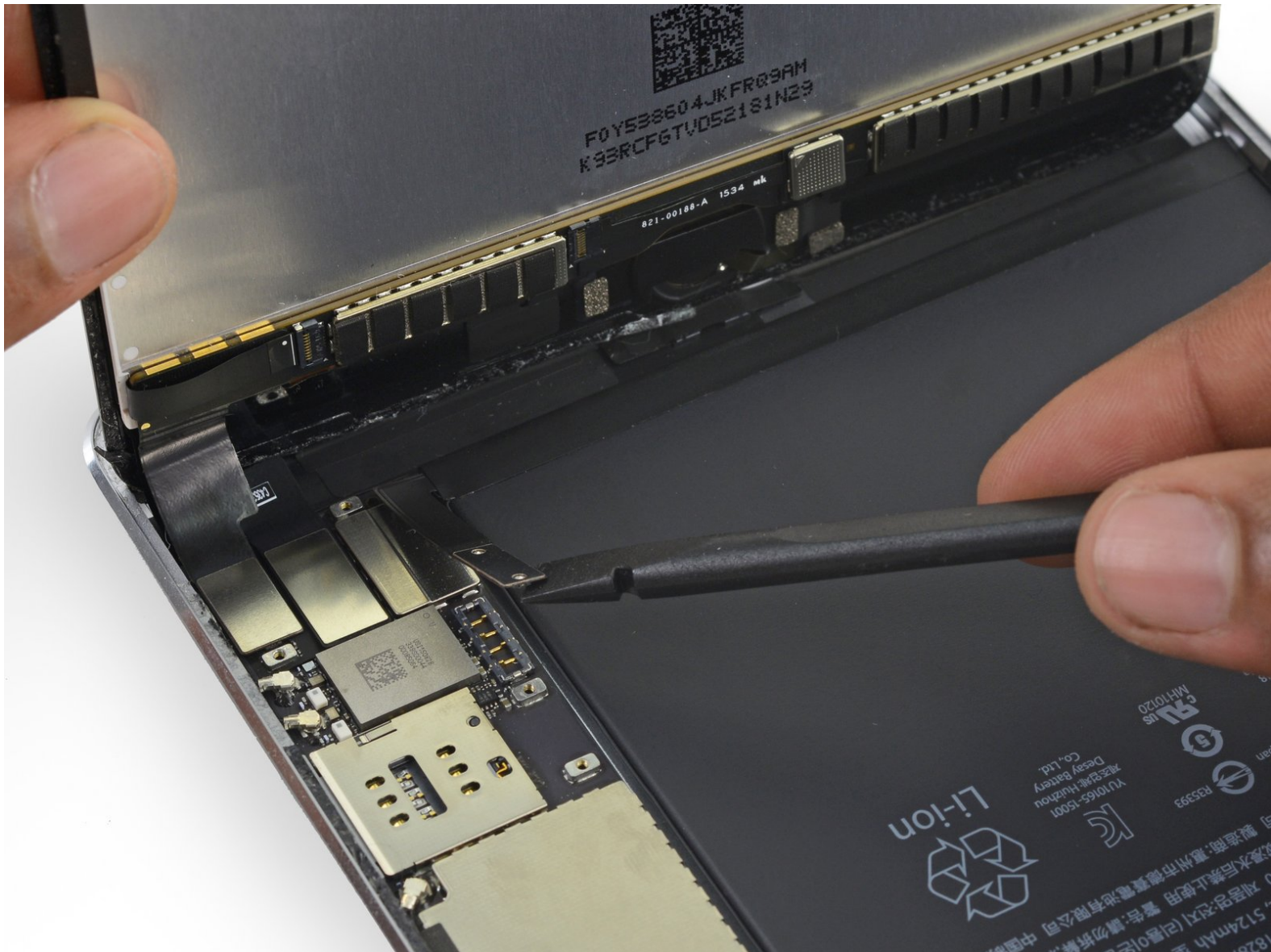




iPad mini 4 LTE Battery Connector Replacement

Prerequisite for disconnecting the battery in an iPad Mini 4.

Written By: Evan Noronha



INTRODUCTION

Prerequisite guide for disconnecting the battery before performing any repair.

TOOLS:

- [Spudger](#) (1)
-

Step 1 — Battery Connector



ⓘ To avoid stressing any cables, hold the display assembly perpendicular to the body of the iPad until it is disconnected.

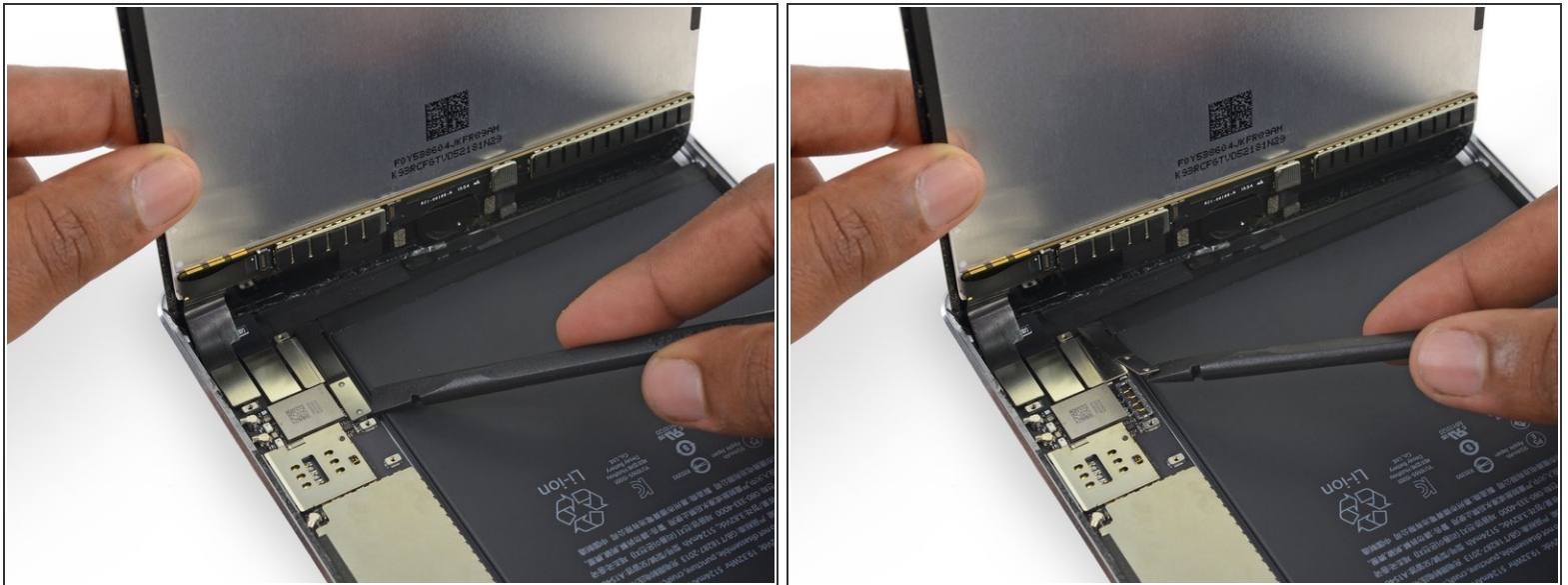
- Remove the four 1.2 mm Phillips screws over the battery/display connector bracket.

Step 2



- Remove the battery/display cable bracket.

Step 3



- ⚠ When disconnecting any press connectors from the logic board, be sure to lift the connector straight up to avoid ripping the socket off the board.
- Use the flat tip of a spudger to disconnect the battery connector from its socket on the logic board.
- ⓘ Bend the battery connector ribbon cable slightly to prevent it from making contact and powering on the iPad.

To reassemble your device, follow these instructions in reverse order.