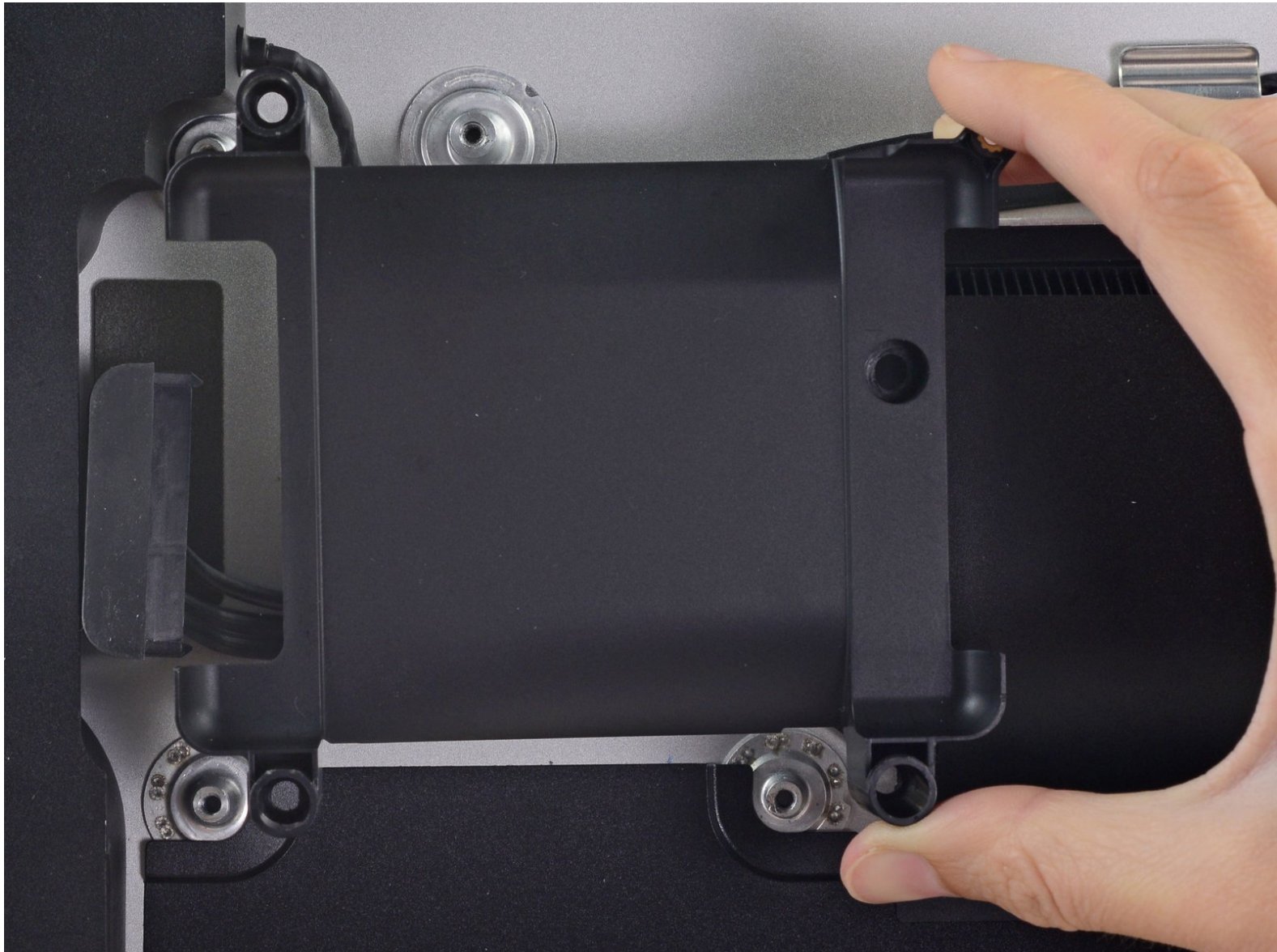




iMac Intel 21.5" Retina 4K Display Hard Drive Tray Replacement

Prerequisite for removing the logic board.

Written By: Evan Noronha



INTRODUCTION

Prerequisite only guide for removing the hard drive tray before the logic board.

TOOLS:

- [T8 Torx Screwdriver](#) (1)
-

Step 1 — Hard Drive Tray



- Remove the 7.3 mm T8 Torx screw securing the hard drive tray to the rear enclosure.

Step 2



- Remove the hard drive tray.

To reassemble your device, follow these instructions in reverse order.