



# Teenage Engineering OP-1 Speaker Replacement

This guide shows you how to replace the speaker in your OP-1.

Written By: Tobias Isakeit



## INTRODUCTION

The built in speaker comes in handy when experimenting outside your perfectly equipped studio environment. So what to do when it won't work any more? Just replace it.

This guide shows you how to replace the speaker in your OP-1.



### TOOLS:

- [iFixit Opening Tools](#) (1)
- [Phillips #00 Screwdriver](#) (1)
- [Spudger](#) (1)
- [Metal Spudger](#) (1)



### PARTS:

- [OP-1 Speaker](#) (1)

## Step 1 — key removal



**i** To get to the screws beneath the keyboard you need to take some keys off. You can use either an opening tool or an opening pick. The first picture shows how it should look like with all the necessary keys off (12 in total).

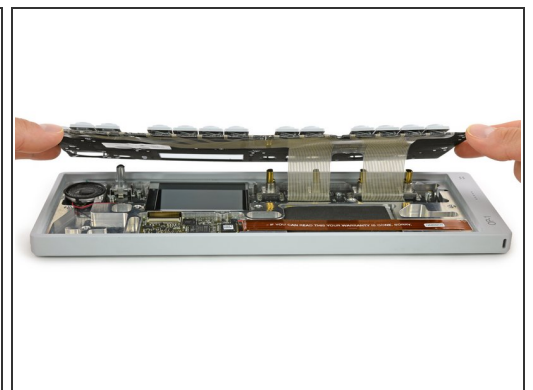
- The four longer keys from the fingerboard are to be handled from the left side to get them off.
- The eight smaller keys need to be levered from the bottom up.

## Step 2 — removing scissors mechanisms



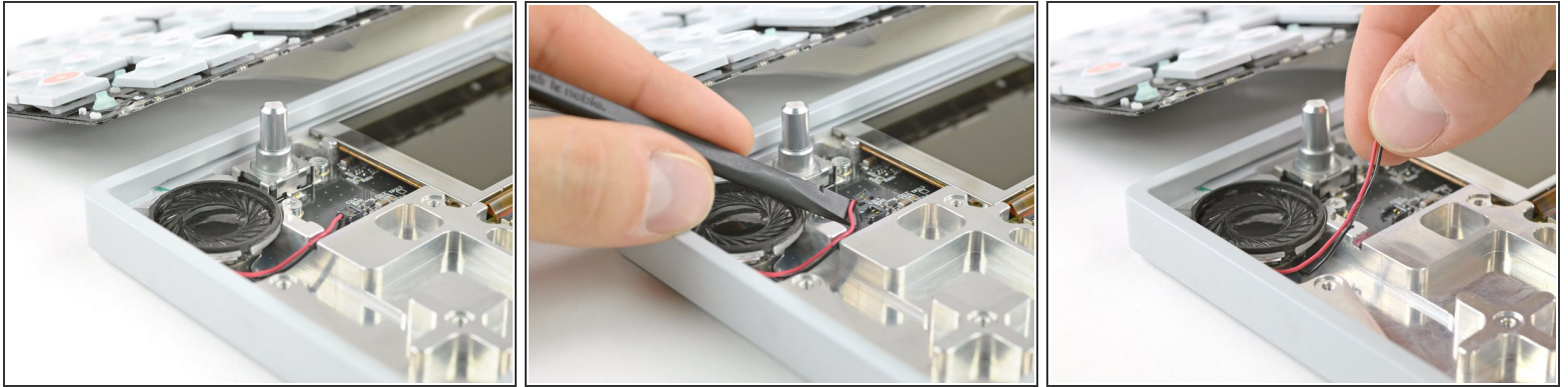
- The scissor mechanism of the eight small keys are obstructing the underlying screws.
- By using again an opening tool or opening pick these can be snapped off easily.
- ⓘ When reassembling be sure to place them in with the correct side facing upwards.

## Step 3 — unscrew keyboard



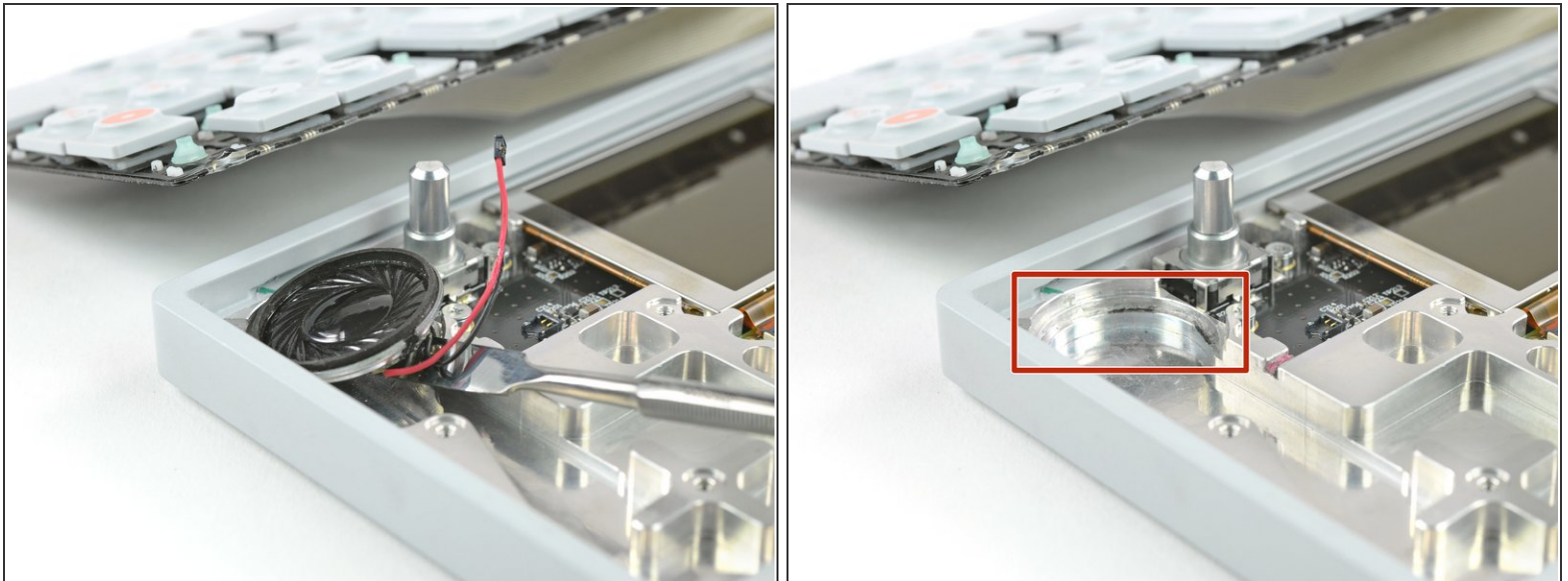
- Loosen those 12 screws with a Phillips #00 screwdriver.
- Then just pull off the four rotary knobs and the volume knob.
- Now it is possible to slightly lift the keyboard and set it back.

## Step 4 — Speaker



- Disconnect the speaker by using a spudger and lifting the connector up.
- The cables run through a small notch and are glued in place.
- ⓘ Now is the time to check the new speaker. Connect it and turn on the OP-1 to make some sounds.
- If everything is fine, pull the cables from the old speaker out of their recess.

## Step 5



- Now you can pry out the speaker itself. If a plastic spudger won't do the job take metal spudger since the speaker is also glued in.
- ☞ Before putting in the new speaker apply some mild adhesive on the edge around its groove.

To reassemble your device, follow these instructions in reverse order.